

Above: The innovative, contemporary design would require custom bespoke door hardware

Left: The re-imagined Century Plaza Hotel with the Towers rising behind

## Transformed Elegance: A Stunning Remodel for an Iconic Hotel and Residences

*INOX delivers custom locks and door hardware to align seamlessly with the architects' vision.*

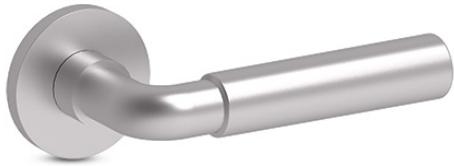
The Century Plaza Hotel opened in 1966 as a playground for the Hollywood elite. Located near the gated mansions of Beverly Hills and Bel Air, the hotel was a second home to A-List glitterati from across the LA basin. Fifty years later, it was time to re-energize Century City and create a new vision of upscale glamour.

Architects breathed new life into the Century Plaza Hotel with boutiques, eateries, and landscaped plazas, and the twin towers rising above the hotel were transformed to offer estate living in a vertical urban environment. The modern grandeur of the Towers required bespoke door hardware that would elevate the innovative, contemporary design.

Along with the tubular, mortise, and sliding door locks provided for the project, INOX by Unison Hardware was commissioned to create custom swing door levers and sliding door pulls. The hardware was designed to elevate the overall project with a clean, bold presentation.

For the swing doors, the GT276 and XGT276 (now known simply as the Plaza levers) were custom designed in an iterative process to align seamlessly with the architects' vision. The 276 Plaza is a two-tiered single cast lever designed to provide the perfect balance between modern

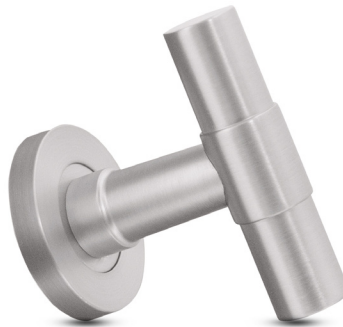
simplicity and enduring details, bringing together timeless aesthetics and engineered ergonomics. Crafted from solid stainless steel, these levers feature concealed fixings, spring-assisted chassis, and an elegant satin nickel finish. The Plaza lever entry hardware was further accented with a custom half-moon ADA thumbturn.



The lever was engineered to be compatible with a range of commercial-grade hardware and locks. This provided strength and resilience across multiple types of door openings, including fire rated Grade 1 commercial mortise locks, Grade 2 interior passage and privacy locks, and Grade

1 exit/panic devices. This seamless integration established a uniform appearance, appropriate functionality, and code compliance throughout the property, including the Towers, the hotel, common areas, and retail/office spaces.

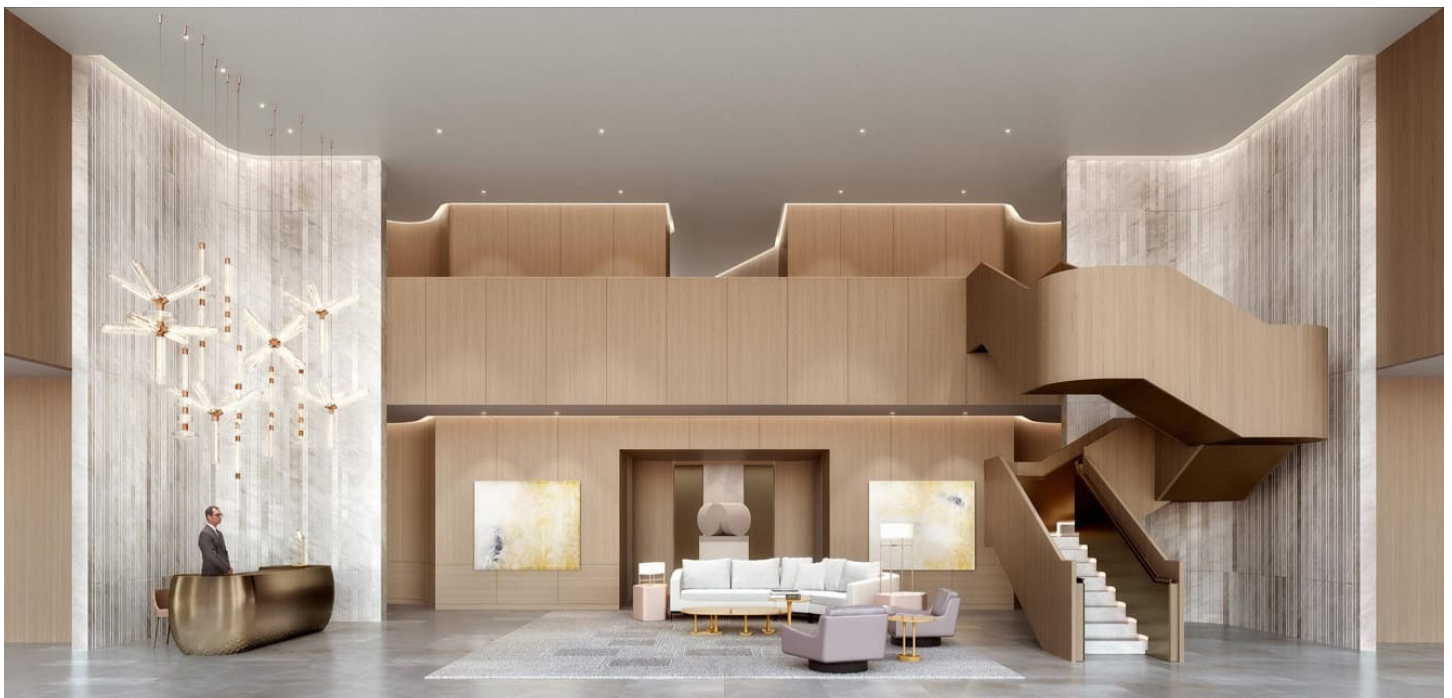
This distinctive lever design was extended to the door pull for the interior sliding pocket doors, extending the uniform design throughout the project. The door pulls were paired with the PD5000 series sliding door lock and the half-moon ADA thumbturn.



INOX by Unison Hardware was the perfect choice for conceiving and delivering custom hardware for the Century Plaza Towers project. As a company dedicated to the beauty and performance of each architectural element, INOX recognizes the pivotal role that small details play in shaping the character of interior spaces. The Plaza 276 lever is the latest iconic delivery from INOX, proving once again that when artful design meets precision technology and craftsmanship, the result is a world-class product.

**For more information about INOX decorative door hardware, visit the website:**

**[www.INOXProducts.com](http://www.INOXProducts.com)**



The concierge desk at the Century Plaza Towers: Estate living in a vertical urban environment