

**inox**<sup>®</sup>  
Engineered Beautifully™



**CERAMAX**<sup>™</sup>  
**RAINBEAUX**<sup>™</sup>

A NEW RANGE OF 12 VIBRANT COLOR  
OPTIONS THAT MATCH, COMPLEMENT, AND  
ENHANCE YOUR PROJECT WITH COLORS THAT  
POP AND A FINISH THAT WON'T STOP.

Engineered beautifully to meet tough tests

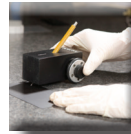


Levers shown above are Graphite Black (C19G), Flat Black (C19), Dark Bronze (CDB), & Stormy Grey (CGY)



### **ASTM D4060 ABRASION**

Test uses a 1000 gram Taber abrasive wheel rotating at constant speed. CeraMax™ finished “strong” and lasted nearly twice as long as nearest competitive finish and 24X longer than furthest competitive finish.



### **ASTM D3363 HARDNESS**

A weighted trolley with varying grades of pencil lead is placed on a CeraMax™ panel and pushed until a lead is found that will not cut through the coating. CeraMax™ Graphite Black achieved a 9h hardness rating, highest rating possible in the Pencil Hardness test.



### **ASTM D2794 DURABILITY**

Impact Resistance measured by placing coated panel in universal impact tester and dropping a standard weight, gradually increasing the distance the weight drops. CeraMax™ Graphite Black attained an impact strength measuring 160 inch-lbs, the maximum the test can measure.



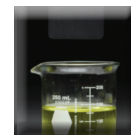
### **ASTM B117 SALT SPRAY**

Coated panels are placed in enclosed salt spray chamber in 95F temperature and subjected to continuous indirect spray of neutral salt water solution. CeraMax™ Graphite Black showed no corrosion after 3500 hours, longer than any competitive coating.



### **ASTM D3359 ADHESION**

Pressure-sensitive tape is applied over a cross-hatch pattern made in coating; tape removed and adhesion of coating to steel assessed on 0B to 5B scale. CeraMax™ Graphite Black finished “Strong” with a 5B adhesion rating, highest rating possible in this test.



### **SOLVENT TEST CHEMICAL RESISTANCE**

Coated panels are dipped for 24 hours into a series of solvents to which the coating may be exposed under chemical attack or extreme conditions. CeraMax™ Graphite Black was classified as “Excellent” for 14 of the solvent tests, including WD-40, Denatured Alcohol, Gasoline, Paint Stripper, and others.

