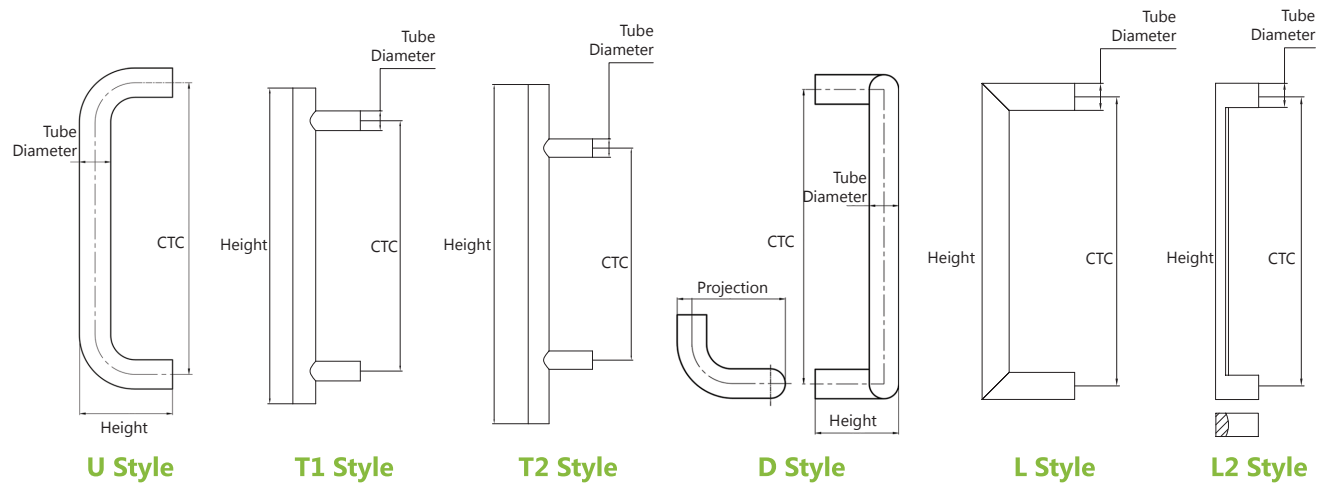


SURFACE PULL OPTIONS



FEATURES

- INOX PHIX Series door pulls are crafted with classic, timeless style. They are ideal for biophilic, ADA, and streamlined interior use
- Pulls are designed with clearance that meets ADA compliance specifications when installed in accordance with other ADA requirements (pull height, door opening space, etc.)
- Fixing packs for Bolt-Thru or Back-to-Back installation are included with each order; clear nylon washer and rubber inserts are included for glass door applications upon request

CODE COMPLIANCE



- ANSI A156.6 – J401, J402, J406
- ANSI A117.1 – ADA for barrier free accessibility
- C-UBC - California Amended Uniform Builders Code
- NFPA 80 - National Fire Protection Association
- NFPA 101 - National Fire Protection - Life Safety

STANDARD FINISHES

- 32D Satin Stainless Steel
- 32 Bright Stainless Steel
- 19G Graphite Black (Limited Styles available)
- CeraMax Ceramic Coating: C19G Graphite Black, C19 Flat Black, CGY Stormy Grey, CDB Dark Bronze

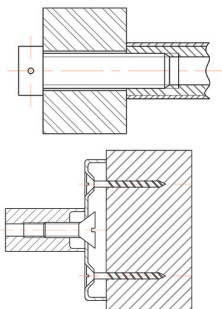
For additional finish options not listed, contact Sales Department for MOQ and lead times

Type	Length	CTC	Tube Dia.	Part Number
U Style	6-3/4"	6"	3/4"	PHIX31106
	8-3/4"	8"	3/4"	PHIX31108
	10-3/4"	10"	3/4"	PHIX31110
	12-3/4"	12"	3/4"	PHIX31112
	16-3/4"	16"	3/4"	PHIX311.16.1675
	18-3/4"	18"	3/4"	PHIX311.18.1875
	11"	10"	1"	PHIX31210
	13"	12"	1"	PHIX31212
	13-1/4"	12"	1-1/4"	PHIX31312
	19-1/4"	18"	1-1/4"	PHIX31318

SURFACE PULL OPTIONS

Type	Length	CTC	Tube Dia.	Part Number
T1 Style	12"	9-1/2"	3/4"	PHIX330.912.12
	16"	13-1/2"	3/4"	PHIX330.1312.16
	18"	15-1/2"	3/4"	PHIX330.1512.18
	16"	13-1/4"	1-1/4"	PHIX333.1325.16
	18"	15-1/4"	1-1/4"	PHIX333.1525.18
	36"	33-1/4"	1-1/4"	PHIX333.3325.36
	48"	45-1/4"	1-1/4"	PHIX333.4525.48
T2 Style 90°	16"	12"	1"	PHIX33212
	16"	10"	1"	PHIX332.10.16
	18"	10"	1-1/4"	PHIX33310
	20"	12"	1-1/4"	PHIX33312
	26"	18"	1-1/4"	PHIX33318
	56"	48"	1-1/4"	PHIX33348
	68"	60"	1-1/4"	PHIX33360
T2 Style 45°	72"	64"	1-1/4"	PHIX33364
	18"	10"	1-1/4"	PHIX34310
	20"	12"	1-1/4"	PHIX34312
	26"	18"	1-1/4"	PHIX34318
D Style	11"	10"	1"	PHIX32210
	13"	12"	1"	PHIX32212
	13-1/4"	12"	1-1/4"	PHIX32312
	19-1/4"	18"	1-1/4"	PHIX32318
L Style	8-3/4"	8"	3/4"	PHIX30108
	16-3/4"	16"	3/4"	PHIX301.16.1675
	18-1/4"	18"	1-1/4"	PHIX303.18.1925
L2 Style	12-3/4"	12"	1"	PHIX45012

For additional finish options not listed, contact Sales Department for MOQ and lead times



All Surface Pulls are available as either **Bolt-Thru**, a single pull (function code **BT**) with BT fixing pack; or **Back-to-Back** (function code **BTB**), two pulls and one Back-to-Back fixing pack.

