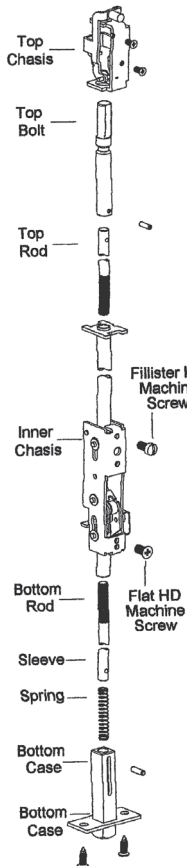


CONCEALED VERTICAL ROD ED93-CVRM/ED93F-CVRM

ANSI Grade 1



APPLICATION AND FEATURES



- Meeting ANSI A156.3 Grade 1 standards and UL listed for Fire Exit Hardware, INOX ED93-CVRM and ED93F-CVRM Concealed Vertical Rod Exit Devices for metal doors are perfect for most single and double hollow metal door applications.
- CVRM Exit Devices are non-handed with a universal design that allows them to easily retrofit the Von Duprin 99 series installation when paired with INOX Exit Device trim.
- Panic Armor (required in California) for exit devices is often optional unless required by building codes for high-occupancy buildings; it ensures safe, quick exit in emergencies.

CODE COMPLIANCE



- ANSI/BHMA A156.3 Grade 1 Exit Devices
- ANSI/BHMA A156.29 Exit Lock and Alarm
- UL Listed for ANSI/UL10B and UL10C, CAN/ULC S104 up to 3 Hours
- UBC Standard 7-2 (1997) NFPA 252

STANDARD FINISHES

- 32D Satin Stainless Steel
- For additional finish options not listed, contact Sales Department for MOQ and lead times*

SPECIFICATION

Device Functions	Trim available separately
Device Lengths	3': 2'2" to 3' (660mm to 914mm) 4': 2'9" to 4' (838mm to 1219mm)
Strikes	Top Dull Black (EDLSR-260) Bottom Dull Black (EDLSR-265)
Dogging Options	Hex Key Dogging available on Non-Fire Rated Devices Only Alarm Kit 36" and 48" available
Electric Option	1. QLR - Motor Driven Retraction 2. REX - Request-to-Exit Switch 3. LBM - Latchbolt Monitor Switch
Miscellaneous	GBK Glass Bead Kit PA Panic Armor
Fasteners & Sex Bolts	Furnished with wood & machine screws
Latch Bolt	Stainless Steel 3/4" (19mm) throw
Device Centerline From Finished Floor	41" (1041mm)
Center Case Dimensions	8-3/32" x 2-13/16" x 2-15/32" (206mm x 71mm x 63mm)
Mechanism Case Dimensions	2-3/16" w x 1-15/16" (55.4mm x 49.1mm)
Top & Bottom Latch Case	Standard Panic: 3-15/16" x 2-1/8" x 1-3/8" (100mm x 52mm x 42mm) Fire-Rated: 3-15/16" x 2-11/16" x 2-1/16" (100mm x 68mm x 52mm)
Vertical Rods	36": Top Rod: 43-1/4" (1099mm) Bottom Rod: 37-3/4" (959mm) 48" Top Rod: 56-1/16" (1424mm) Bottom Rod: 37-3/4" (959mm)
Pushbar Projections	Neutral: 3-3/4" (95.3mm) Depressed: 2-15/16" (74.5mm)