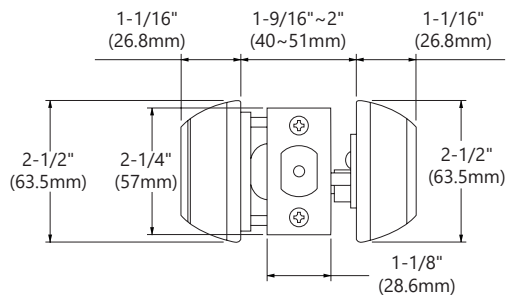
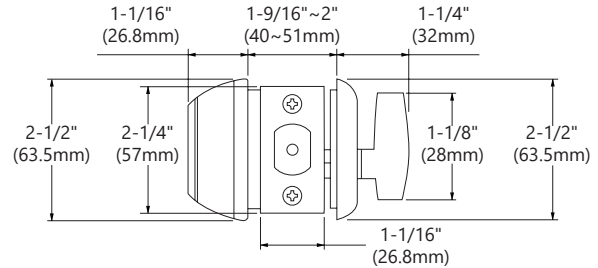


# CX HEAVY DUTY DEADBOLT

## CX Deadbolt Grade 1

### SPECIFICATIONS

<b>Door Thickness</b>	1-9/16" (40mm) ~ 2" (51mm) doors standard
<b>Backset</b>	2-3/8" (60mm) or 2-3/4" (70mm)
<b>Handing</b>	Non-handed
<b>Exposed Trim</b>	2-1/2" (63.5mm) diameter solid brass, one-piece design exceeds BHMA/ANSI Grade 1 security against hammer and crowbar prying attacks
<b>Faceplate</b>	1-1/8" (28.6mm) x 2-1/4" (57mm) with square corners; Stainless Steel or brass faceplate
<b>Dead Bolt</b>	1" (25mm) throw deadbolt with saw-resistant hardened steel core
<b>Strike</b>	1-1/8" (28.6mm) x 2-3/4" (70mm) with steel reinforcement
<b>Cylinder &amp; Keys</b>	6-pin anti-pick cylinder in Schlage C keyway keyed different with 2 brass keys per lock. Small Format Interchangeable Core (SFIC) available by specifying IC core; please order separately
<b>Keying Options</b>	Keyed Alike, Master keying, Grand Master Keying, and Construction Keying available by special order. Nickel silver keys available by special order



### STANDARD FINISHES

- 10B Oil Rubbed Bronze
- 19G Graphite Black
- 26D Satin Chrome

*For additional finish options not listed, contact Sales Department for MOQ and lead times*

### CODE COMPLIANCE



ANSI/BHMA A156.36 & A156.5 Grade 1  
 UL Listed for UL10B and UL10C, up to 3 Hours  
 UBC Standard 7-2 (1997) NFPA 252  
 NFPA 80 National Fire Protection-Fire Door Assembly  
 NFPA101 National Fire Protection-Life Safety  
 ANSI/BHMA A156.18 Finishes  
 ANSI A117.1 ADA Accessibility