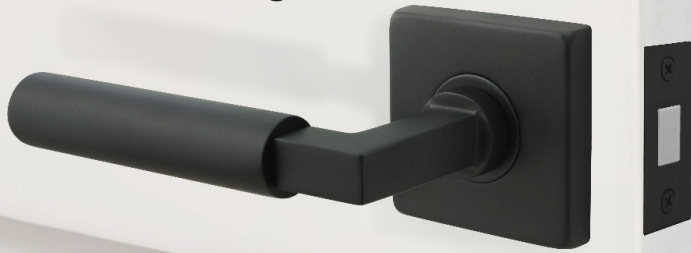


TL7

Magnetic Tubular Latch For Swing Doors



HIGHLIGHTS

- Magnetic latching eliminates the need for lip strikes and lip cut-outs on door frame. Bendable tabs are included in the dust-box to ensure proper fit by eliminating extra play.
- Both latch bolt and strike design incorporate neodymium magnets, the strongest in commercial use.
- 28-degree retraction supports ergonomic ease of use.
- Applicable with all INOX decorative levers, knob, and escutcheon designs with no special modification.

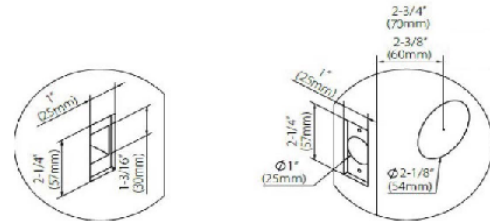
SPECIFICATIONS

Edge Bore	1" Edge Bore Latch face 2-1/4" x 1" square
Door Thickness	1-3/8"(35mm) to 1-3/4"(44mm) Thick door kits available
Backset	2-3/8" (60mm) 2-3/4" (70mm)
Lever Spindle	8 x 8mm square
Lever Action	28 degree
Handing	Latch is field reversible Specify for Half Passage

APPLICATION

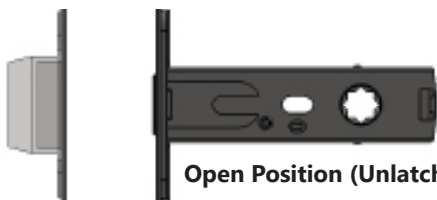
TL7 Magnetic Tubular latches are suitable for a wide range of applications, including but not limited to: Hospitality and high-end Residential.

DOOR PREPARATION



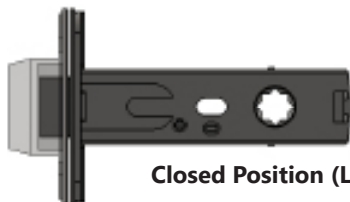
Strike Prep

Latch Prep



Open Position (Unlatched):

Latch bolt is completely retracted when the door is open for improved path of access.



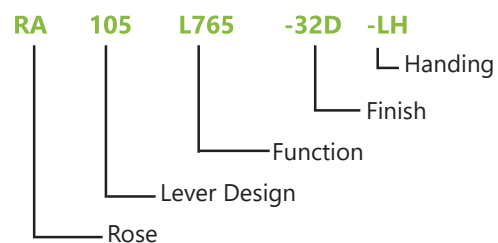
Closed Position (Latched):

When door is closed, rather than a lip strike forcing the bolt into the strike, a powerful rare earth magnet instantly and quietly snaps the bolt in place to latch the door.

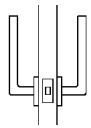
HOW TO ORDER

Specify the Rose, Lever Design, Function, Backset, Finish and Handing using the product identification below:

Standard Product Identifications

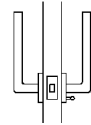


FUNCTION



Passage

- Both levers are always unlocked



Privacy

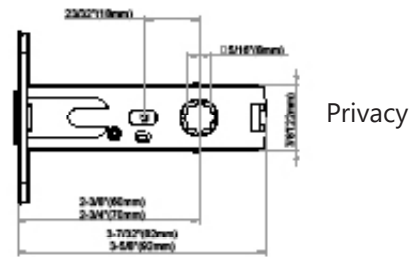
- Push the privacy pin from inside to lock door
- Unlock by turning inside lever or using emergency release pinhole located on outside rose or plate cover



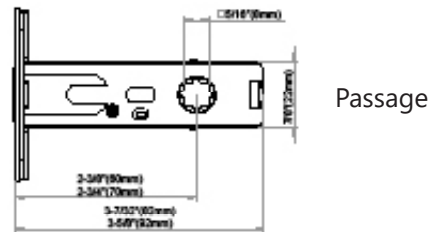
Half Passage

- Outside lever always unlocked; inside, dummy rose only
- Door cannot be opened from inside

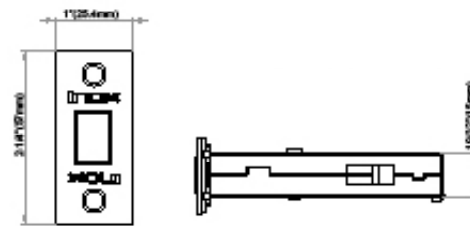
DIMENSIONS



Privacy



Passage

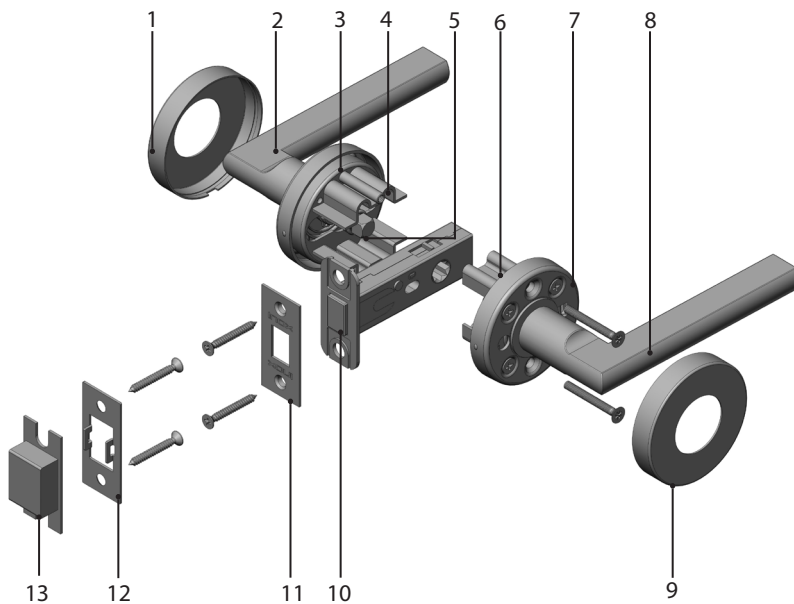


FUNCTION TABLE

	Passage	Privacy	Half Passage
2-3/4" backset code	L771	L772	L775
2-3/8" backset code	L761	L762	L765
Latch	×	×	×
Levers	×	×	×

TL7 MAGNETIC LATCH

COMPONENTS



1. Outside Rose
2. Outside Lever
3. Sub-rose
4. Stabilizing Bracket
5. Spindle
6. Interior Bracket
7. Sub-rose
8. Inside Lever
9. Inside Rose
10. TL7 Magnetic Latch
11. Latch Faceplate
12. Bendable Tabs Strike Faceplate
13. Magnetic Dust Box

FINISH

Standard:

- 32 Bright Stainless Steel
- 32D Satin Stainless Steel
- 19G Graphite Black
- 10B Oil Rubbed Bronze
- PVD4 Satin Brass PVD

Special Order:

- CeraMax Ceramic Coating
 - C19G Ceramic Graphite Black
 - C19 Ceramic Flat Black
 - CGY Ceramic Stormy Grey
 - CDB Ceramic Dark Bronze

MATERIAL

Stainless Steel Face and Strike

ROSE AND ESCUTCHEONS



RA Rose



GT Rose



SE Rose



GS Rose


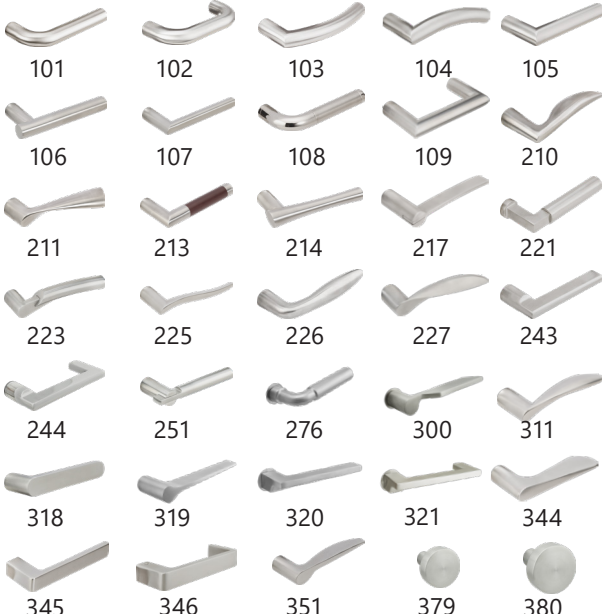


SH Plate

TL7 MAGNETIC LATCH

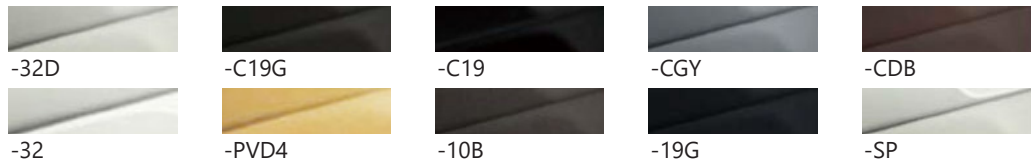
HOW TO ORDER

To order locksets, please describe the additional requirements in the same sequence as below. Parts or service upcharges may apply.

Rose	Lever	Function	Finish	Handing
SH ①	318 ②	L472 ③	-32D ④	-LH ⑤
ROSE	LEVER	FUNCTION		
 RA SE GT GS SH	 101 102 103 104 105 106 107 108 109 210 211 213 214 217 221 223 225 226 227 243 244 251 276 300 311 318 319 320 321 344 345 346 351 379 380	DL Dummy Left DR Dummy Right L761 Passage, 2-3/8" Backset, TL7 Latch L762 Privacy, 2-3/8" Backset, TL7 Latch L765 Half Passage, 2-3/8" Backset, TL7 Latch L771 Passage, 2-3/4" Backset, TL7 Latch L772 Privacy, 2-3/4" Backset, TL7 Latch L775 Half Passage, 2-3/4" Backset, TL7 Latch <i>379 only available in GT/GS/SH</i> <i>380 only available in RA/SE/SH</i>		

④ FINISH

Standard:



PVD4 is available for 105, 108, 221, 243, 244, 276, 318, 319, 320 and 345 lever designs.

⑤ HANDING

-RH = Right Hand

-LH = Left Hand

-RHR = Right Hand Reverse

-LHR = Left Hand Reverse