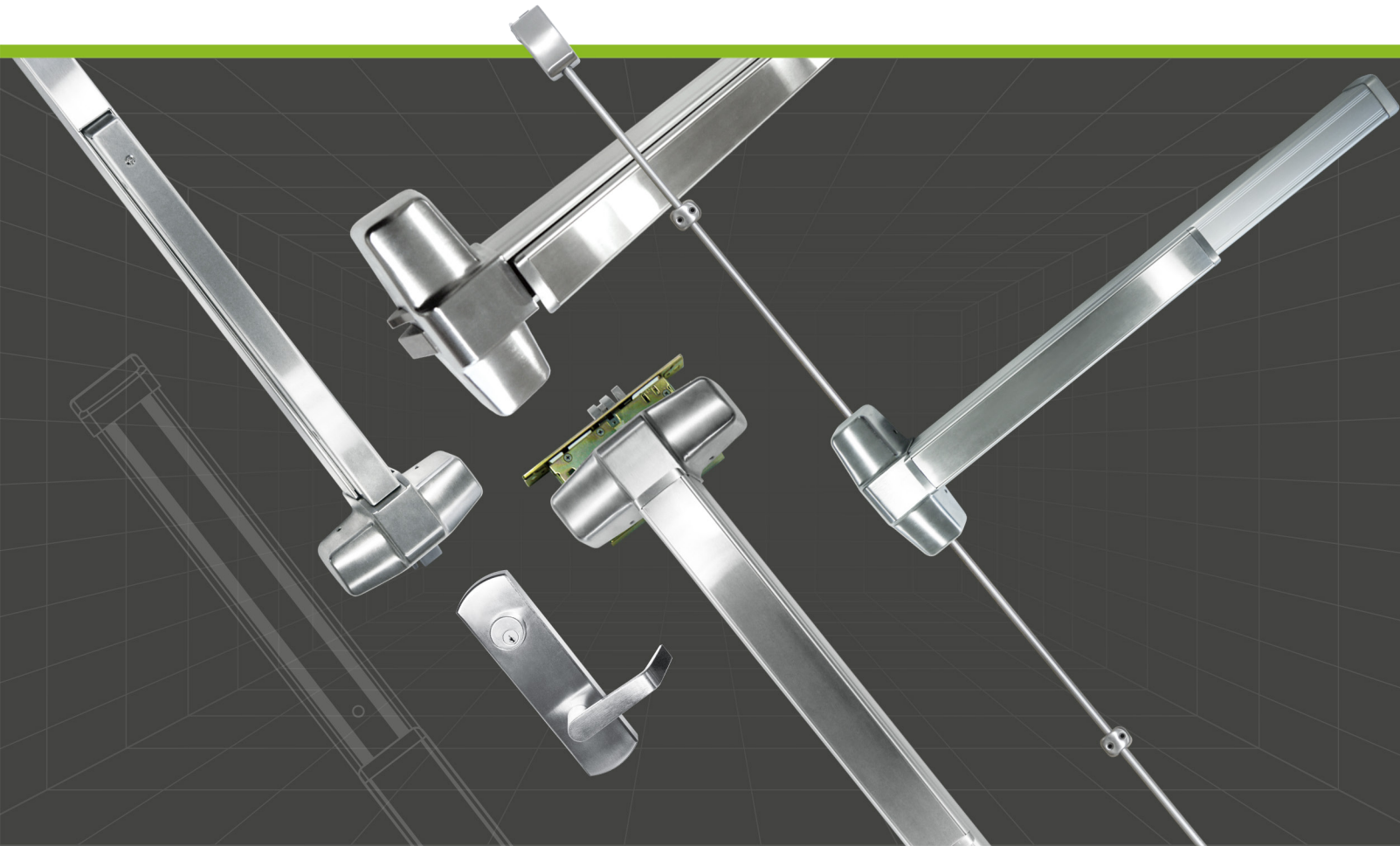


ANSI/BHMA GRADE 1 **EXIT DEVICES**



INOX ED93 Heavy Duty Commercial Exit Device

INOX ED70 Commercial Exit Device

INOX ED81 Narrow Stile Exit Device

CONTENTS

ED93 Series



- Page 01** ED93 Heavy Duty Commercial Exit Devices
 - Page 07** ED93 Electrification
 - Page 09** Exit Alarm Kit & Cylinder Dogging Device
 - Page 10** Optional Strikes
 - Page 11** How to Order
-

ED70 Series



- Page 12** ED70 Commercial Exit Devices
 - Page 15** Exit Alarm Kit & Cylinder Dogging Device
 - Page 16** Optional Strikes
 - Page 17** How to Order
-

- Page 18** Trim Options for RIM, SVR, LBR
 - Page 21** Trim Options for Concealed Vertical Rod
 - Page 23** Trim Options for Mortise Exit Device
-

ED81 Series



- Page 24** ED81 Narrow Stile Exit Device
 - Page 25** Surface Mounted Vertical Rod
 - Page 26** Concealed Vertical Rod
 - Page 27** Motor Driven Latch Retraction Exit Device
 - Page 28** Narrow Stile Exit Device Electrified Trim
 - Page 30** Exit Alarm Kit & Cylinder Dogging Device
 - Page 31** How to Order
-

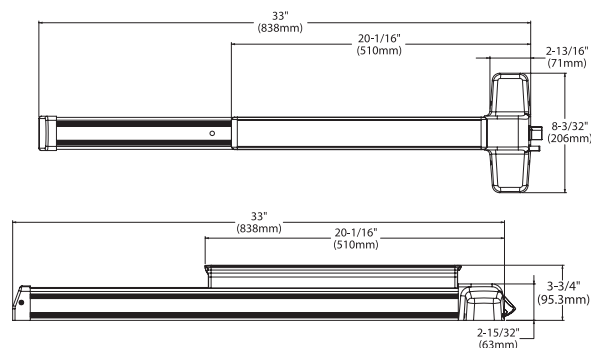
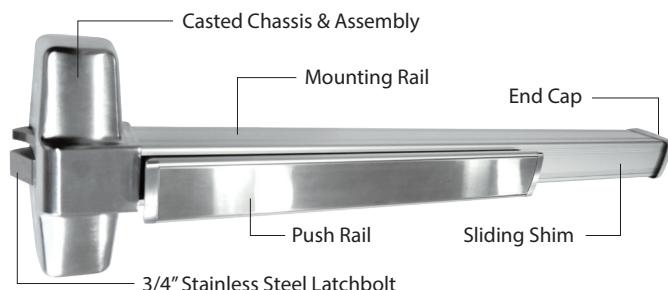
- Page 32** Power Supply
 - Page 36** Concealed Door Loop
 - Page 37** Power Transfer Hinge
 - Page 38** Concealed Electric Power
 - Page 39** Surface Door Loops
 - Page 40** Mullions
 - Page 42** Cross References
-

Disclaimer: All information in this catalog has been deemed accurate as of the date of printing. We are continuously improving and expanding our line in an effort to offer our clients the finest quality products and services; therefore, Unison Hardware, Inc., reserves the right to alter this information or correct printing errors at any time.

© 2025 Unison Hardware, Inc. All Rights Reserved. V20250123

HEAVY DUTY COMMERCIAL EXIT DEVICE ED93/ED93F

ANSI Grade 1



SPECIFICATION

Device Functions	Trim available separately
Device Lengths	3': 2'2" to 3' (660mm to 914mm) 4': 2'9" to 4' (838mm to 1219mm)
Strikes	Dull Black Rim Strike (EDLSR-239)
Dogging Feature	Hex Key Dogging available on Non-Fire Rated devices only
Dogging Options	Cylinder Dogging kits available Alarm Kit 36" and 48" available
Electric Options	1. QLR - Motor Driven Retraction 2. REX - Request-to-Exit Switch 3. LBM - Latchbolt Monitor Switch
Miscellaneous	GBK Glass Bead Kit PA Panic Armor
Fasteners & Sex Bolts	Furnished with wood & machine screws. Thru-bolts standard on Fire-Rated devices
Latch Bolt	Stainless Steel 3/4" (19mm) throw
Device Centerline from Finished Floor	41" (1041mm)
Center Case Dimensions	8-3/32" x 2-13/16" x 2-15/32" (206mm x 71mm x 63mm)
Mechanism Case Dimensions	2-3/16" w x 1-15/16" (55.4mm x 49.1mm)
Pushbar Projections	Neutral 3-3/4" (95.3mm) Depressed 2-15/16" (74.5mm)

STANDARD FINISHES

- 32D Satin Stainless Steel
- 19G Graphite Black
- DU Duro/Dark Bronze Painted

For additional finish options not listed, contact Sales Department for MOQ and lead times

APPLICATION AND FEATURES

- INOX ED93 and ED93F Rim Exit Devices meet ANSI A156.3 Grade 1 standards, are UL listed for Panic and Fire Exit hardware, and will install on a standard 161 cutout. They are ideal for most single door applications or double doors using a mullion.
- Non-handed with a universal design, ED93 and ED93F easily retrofit the Von Duprin 99 series installation when paired with INOX Exit Device trim.
- Panic Armor (required in California) for exit devices is often optional unless required by building codes for high-occupancy buildings; it ensures safe, quick exit in emergencies.

CODE COMPLIANCE

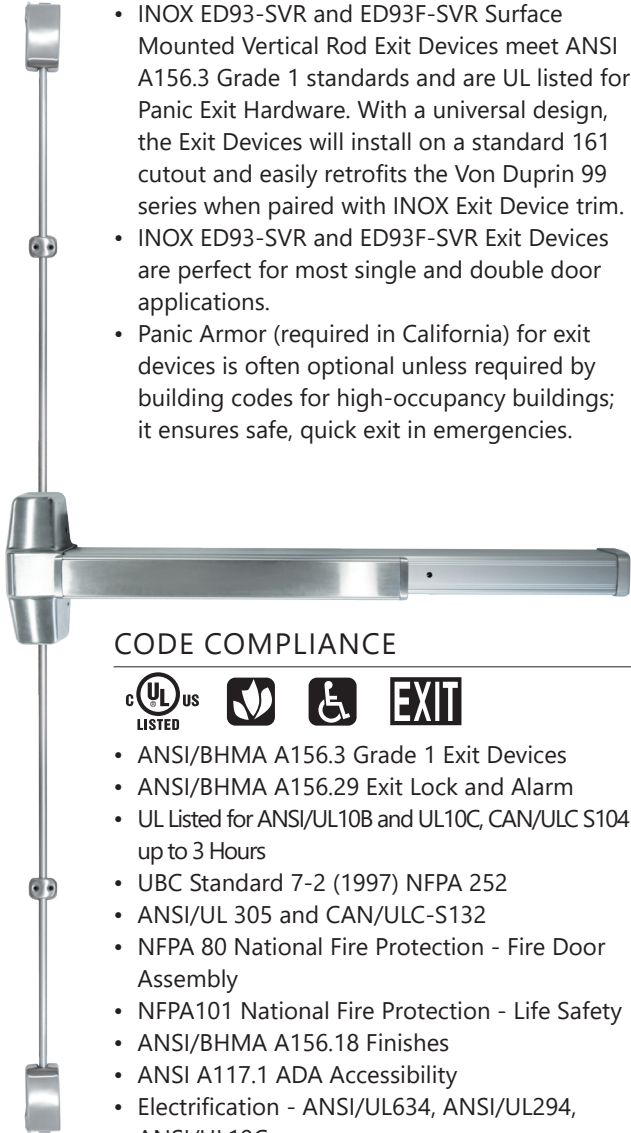


- ANSI/BHMA A156.3 Grade 1 Exit Devices
- ANSI/BHMA A156.29 Exit Lock and Alarm
- UL Listed for ANSI/UL10B and UL10C, CAN/ULC S104 up to 3 Hours
- UBC Standard 7-2 (1997) NFPA 252
- ANSI/UL 305 and CAN/ULC-S132
- NFPA 80 National Fire Protection - Fire Door Assembly
- NFPA101 National Fire Protection - Life Safety
- ANSI/BHMA A156.18 Finishes
- ANSI A117.1 ADA Accessibility
- Electrification - ANSI/UL634, ANSI/UL294, ANSI/UL10C

SURFACE MOUNTED VERTICAL ROD ED93-SVR/ED93F-SVR

ANSI Grade 1

APPLICATION AND FEATURES



- INOX ED93-SVR and ED93F-SVR Surface Mounted Vertical Rod Exit Devices meet ANSI A156.3 Grade 1 standards and are UL listed for Panic Exit Hardware. With a universal design, the Exit Devices will install on a standard 161 cutout and easily retrofits the Von Duprin 99 series when paired with INOX Exit Device trim.
- INOX ED93-SVR and ED93F-SVR Exit Devices are perfect for most single and double door applications.
- Panic Armor (required in California) for exit devices is often optional unless required by building codes for high-occupancy buildings; it ensures safe, quick exit in emergencies.

CODE COMPLIANCE



- ANSI/BHMA A156.3 Grade 1 Exit Devices
- ANSI/BHMA A156.29 Exit Lock and Alarm
- UL Listed for ANSI/UL10B and UL10C, CAN/ULC S104 up to 3 Hours
- UBC Standard 7-2 (1997) NFPA 252
- ANSI/UL 305 and CAN/ULC-S132
- NFPA 80 National Fire Protection - Fire Door Assembly
- NFPA101 National Fire Protection - Life Safety
- ANSI/BHMA A156.18 Finishes
- ANSI A117.1 ADA Accessibility
- Electrification - ANSI/UL634, ANSI/UL294, ANSI/UL10C

STANDARD FINISHES

- 32D Satin Stainless Steel
- 19G Graphite Black
- DU Duro/Dark Bronze Painted

For additional finish options not listed, contact Sales Department for MOQ and lead times

SPECIFICATION

Device Functions	Trim available separately
Device Lengths	3': 2'2" to 3' (660mm to 914mm) 4': 2'9" to 4' (838mm to 1219mm)
Strikes	Top Dull Black (EDLSR-227) Bottom Dull Black (EDLSR-233 & EDLSR-221)
Fire Rated Strikes	Top Dull Black (EDLSR-245) Bottom Dull Black (EDLSR-233)
Dogging Feature	Hex Key Dogging available on Non-Fire Rated devices only
Dogging Options	Cylinder Dogging available on complete devices only, not as separate kits
Electric Options	Alarm Kit 36" and 48" available 1. QLR - Motor Driven Retraction 2. REX - Request-to-Exit Switch 3. LBM - Latchbolt Monitor Switch
Miscellaneous	GBK Glass Bead Kit PA Panic Armor
Fasteners & Sex Bolts	Furnished with wood & machine screws. Thru-bolts standard on Fire Rated devices
Device Centerline from Finished Floor	41" (1041mm)
Center Case Dimensions	8-3/32" x 2-13/16" x 2-15/32" (206mm x 71mm x 63mm)
Mechanism Case Dimensions	2-3/16" w x 1-15/16" (55.4mm x 49.1mm) Top & Bottom Latch Case Standard: 3-15/16" x 2-1/8" x 1-3/8" (100mm x 54mm x 35mm) Fire Rated: 3-15/16" x 2-11/16" x 2-1/16" (100mm x 68mm x 52mm)
Vertical Rods	36": Top Rod - 43-1/4" (1099mm) Bottom Rod - 37-3/4" (959mm) 48": Top Rod - 56-1/16" (1424mm) Bottom Rod - 37-3/4" (959mm)
Pushbar Projections	Neutral 3-3/4" (95.3mm) Depressed 2-15/16" (74.5mm)

LESS BOTTOM ROD ED93-LBR/ED93F-LBR

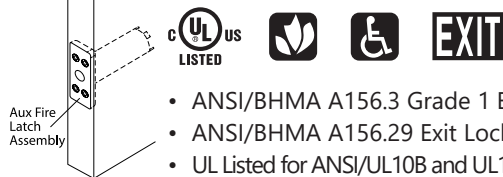
ANSI Grade 1

APPLICATION AND FEATURES



- INOX ED93-LBR and ED93F-LBR Less Bottom Rod Exit Devices use a spring-loaded auxiliary latch bolt in the lower door edge, providing free access for wheelchairs and stretchers.
- Meeting ANSI A156.3 Grade 1 standards and UL listed for Panic Exit Hardware, the Exit Devices are suitable for all double doors and install easily with a standard 161 cutout. Their non-handed, universal design allows them to retrofit the Von Duprin 99 series installation when paired with INOX Exit Device trim.
- Panic Armor (required in California) for exit devices is often optional unless required by building codes for high-occupancy buildings; it ensures safe, quick exit in emergencies.

CODE COMPLIANCE



- ANSI/BHMA A156.3 Grade 1 Exit Devices
- ANSI/BHMA A156.29 Exit Lock and Alarm
- UL Listed for ANSI/UL10B and UL10C, CAN/ULC S104 up to 3 Hours

STANDARD FINISHES

- 32D Satin Stainless Steel
- For additional finish options not listed, contact Sales Department for MOQ and lead times*

SPECIFICATION

Device Functions	Trim available separately
Device Lengths	3': 2'2" to 3' (660mm to 914mm) 4': 2'9" to 4' (838mm to 1219mm)
Strikes	Top Dull Black Strike (EDLSR-245)
Dogging Feature	Hex Key Dogging available on Non-Fire Rated devices only
Dogging Options	Cylinder Dogging kits available Alarm Kit 36" and 48" available
Electric Options	1. QLR - Motor Driven Retraction 2. REX - Request-to-Exit Switch 3. LBM - Latchbolt Monitor Switch
Miscellaneous	GBK Glass Bead Kit PA Panic Armor
Fasteners & Sex Bolts	Furnished with wood & machine screws. Thru-bolts standard on Fire Rated devices
Latch Bolt	Stainless Steel 3/4" (19mm) throw
Device Centerline from Finished Floor	41" (1041mm)
Center Case Dimensions	8-3/32" x 2-13/16" x 2-15/32" (206mm x 71mm x 63mm)
Mechanism Case Dimensions	2-3/16" w x 1-15/16" (55.4mm x 49.1mm) Top & Bottom Latch Case Standard Panic: 3-15/16" x 2-1/8" x 1-3/8" (100mm x 52mm x 42mm) Fire Rated: 3-15/16" x 2-11/16" x 2-1/16" (100mm x 68mm x 52mm)
Vertical Rods	36": Top Rod - 43-1/4" (1099mm) 48": Top Rod - 56-1/16" (1424mm)
Pushbar Projections	Neutral 3-3/4" (95.3mm) Depressed 2-15/16" (74.5mm)

HEAVY DUTY MORTISE DEVICE ED93-MED/ED93F-MED

ANSI Grade 1



SPECIFICATION

Device Functions	MED for Exit Only MED08 for Entry MED09 for Storeroom MED14 for Passage
Device Lengths	3': 2'2" to 3' (660mm to 914mm) 4': 2'9" to 4' (838mm to 1219mm)
Strikes	Standard ANSI Strike
Dogging Options	Hex Key Dogging available on Non-Fire Rated Devices Only Alarm Kit 36" and 48" available
Electric Options	1. QLR - Motor Driven Retraction 2. REX - Request-to-Exit Switch 3. LBM - Latchbolt Monitor Switch
Miscellaneous	GBK Glass Bead Kit PA Panic Armor
Fasteners & Sex Bolts	Furnished with wood & machine screws
Mortise Lock	Grade 1 for 1-3/4" thick doors, reversible, 2-3/4" backset
Device Centerline from Finished Floor	41" (1041mm)
Center Case Dimensions	8-3/32" x 2-13/16" x 2-15/32" (206mm x 71mm x 63mm)
Mechanism Case Dimensions	2-3/16" w x 1-15/16" (55.4mm x 49.1mm)
Pushbar Projections	Neutral: 3-3/4" (95.3mm) Depressed: 2-15/16" (74.5mm)

STANDARD FINISHES

- 32D Satin Stainless Steel

For additional finish options not listed, contact Sales Department for MOQ and lead times

APPLICATION AND FEATURES

- INOX ED93-MED and ED93F-MED Mortise Exit Devices are designed to provide superior, long-lasting service for most single door applications or on double doors when open-backed strikes are used.
- The Mortise Exit Devices are UL listed for Fire Exit Hardware and meet ANSI A156.3 Grade 1 standards.
- Installed on a standard 86 pocket prep, the Mortise Exit Devices are non-handed with a universal design that allows them to easily retrofit the Von Duprin 99 series installation when paired with INOX Exit Device trim.
- Panic Armor (required in California) for exit devices is often optional unless required by building codes for high-occupancy buildings; it ensures safe, quick exit in emergencies.

CODE COMPLIANCE



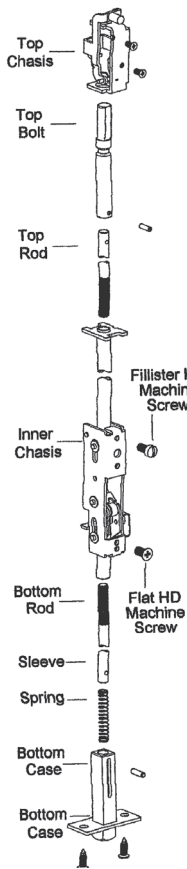
- ANSI/BHMA A156.3 Grade 1 Exit Devices
- ANSI/BHMA A156.29 Exit Lock and Alarm
- UL Listed for ANSI/UL10B and UL10C, CAN/ULC S104 up to 3 Hours
- UBC Standard 7-2 (1997) NFPA 252
- ANSI/UL 305 and CAN/ULC-S132
- NFPA 80 National Fire Protection - Fire Door Assembly
- NFPA101 National Fire Protection - Life Safety
- ANSI/BHMA A156.18 Finishes
- ANSI A117.1 ADA Accessibility
- Electrification - ANSI/UL634, ANSI/UL294, ANSI/UL10C

CONCEALED VERTICAL ROD ED93-CVRM/ED93F-CVRM

ANSI Grade 1



APPLICATION AND FEATURES



- Meeting ANSI A156.3 Grade 1 standards and UL listed for Fire Exit Hardware, INOX ED93-CVRM and ED93F-CVRM Concealed Vertical Rod Exit Devices for metal doors are perfect for most single and double hollow metal door applications.
- CVRM Exit Devices are non-handed with a universal design that allows them to easily retrofit the Von Duprin 99 series installation when paired with INOX Exit Device trim.
- Panic Armor (required in California) for exit devices is often optional unless required by building codes for high-occupancy buildings; it ensures safe, quick exit in emergencies.

CODE COMPLIANCE



- ANSI/BHMA A156.3 Grade 1 Exit Devices
- ANSI/BHMA A156.29 Exit Lock and Alarm
- UL Listed for ANSI/UL10B and UL10C, CAN/ULC S104 up to 3 Hours
- UBC Standard 7-2 (1997) NFPA 252

STANDARD FINISHES

- 32D Satin Stainless Steel
- For additional finish options not listed, contact Sales Department for MOQ and lead times*

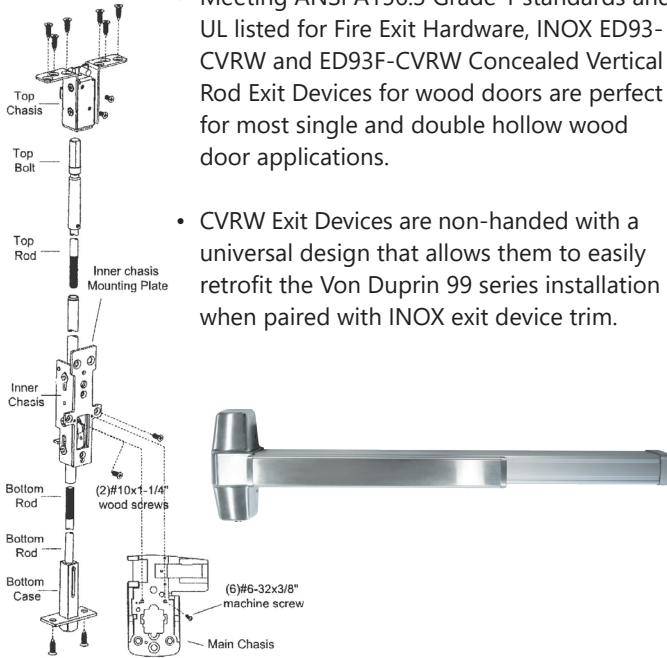
SPECIFICATION

Device Functions	Trim available separately
Device Lengths	3': 2'2" to 3' (660mm to 914mm) 4': 2'9" to 4' (838mm to 1219mm)
Strikes	Top Dull Black (EDLSR-260) Bottom Dull Black (EDLSR-265)
Dogging Options	Hex Key Dogging available on Non-Fire Rated Devices Only Alarm Kit 36" and 48" available
Electric Option	1. QLR - Motor Driven Retraction 2. REX - Request-to-Exit Switch 3. LBM - Latchbolt Monitor Switch
Miscellaneous	GBK Glass Bead Kit PA Panic Armor
Fasteners & Sex Bolts	Furnished with wood & machine screws
Latch Bolt	Stainless Steel 3/4" (19mm) throw
Device Centerline From Finished Floor	41" (1041mm)
Center Case Dimensions	8-3/32" x 2-13/16" x 2-15/32" (206mm x 71mm x 63mm)
Mechanism Case Dimensions	2-3/16" w x 1-15/16" (55.4mm x 49.1mm)
Top & Bottom Latch Case	Standard Panic: 3-15/16" x 2-1/8" x 1-3/8" (100mm x 52mm x 42mm) Fire-Rated: 3-15/16" x 2-11/16" x 2-1/16" (100mm x 68mm x 52mm)
Vertical Rods	36": Top Rod: 43-1/4" (1099mm) Bottom Rod: 37-3/4" (959mm) 48" Top Rod: 56-1/16" (1424mm) Bottom Rod: 37-3/4" (959mm)
Pushbar Projections	Neutral: 3-3/4" (95.3mm) Depressed: 2-15/16" (74.5mm)

CONCEALED VERTICAL ROD ED93-CVRW/ED93F-CVRW

ANSI Grade 1

APPLICATION AND FEATURES



- Meeting ANSI A156.3 Grade 1 standards and UL listed for Fire Exit Hardware, INOX ED93-CVRW and ED93F-CVRW Concealed Vertical Rod Exit Devices for wood doors are perfect for most single and double hollow wood door applications.
- CVRW Exit Devices are non-handed with a universal design that allows them to easily retrofit the Von Duprin 99 series installation when paired with INOX exit device trim.

CODE COMPLIANCE



- ANSI/BHMA A156.3 Grade 1 Exit Devices
- ANSI/BHMA A156.29 Exit Lock and Alarm
- UL Listed for ANSI/UL10B and UL10C, CAN/ULC S104 up to 3 Hours
- UBC Standard 7-2 (1997) NFPA 252
- ANSI/UL 305 and CAN/ULC-S132
- NFPA 80 National Fire Protection - Fire Door Assembly
- NFPA101 National Fire Protection - Life Safety
- ANSI/BHMA A156.18 Finishes
- ANSI A117.1 ADA Accessibility
- Electrification - ANSI/UL634, ANSI/UL294, ANSI/UL10C

STANDARD FINISHES

- 32D Satin Stainless Steel

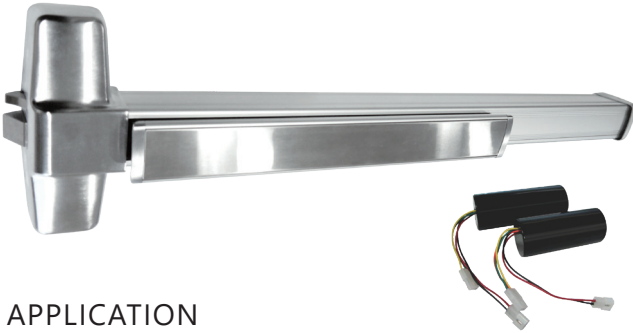
For additional finish options not listed, contact Sales Department for MOQ and lead times

SPECIFICATION

Trims	Trims available separately
Device Lengths	3': 2'2" to 3' (660mm to 914mm) 4': 2'9" to 4' (838mm to 1219mm)
Strikes	Top Dull Black (EDLSR-260) Bottom Dull Black (EDLSR-265)
Dogging Options	Hex Key Dogging available on Non-Fire Rated Devices Only
Electric Options	Alarm Kit 36" and 48" available 1. QLR - Motor Driven Retraction 2. REX - Request-to-Exit Switch 3. LBM - Latchbolt Monitor Switch
Miscellaneous	GBK Glass Bead Kit PA Panic Armor
Fasteners & Sex Bolts	Furnished with wood & machine screws
Latch Bolt	Stainless Steel 3/4" (19mm) throw
Device Centerline from Finished Floor	41" (1041mm)
Center Case Dimensions	8-3/32" x 2-13/16" x 2-15/32" (206mm x 71mm x 63mm)
Mechanism Case Dimensions	2-3/16" w x 1-15/16" (55.4mm x 49.1mm)
Top & Bottom Latch Case	Standard Panic: 3-15/16" x 2-1/8" x 1-3/8" (100mm x 54mm x 35mm) Fire-Rated: 3-15/16" x 2-11/16" x 2-1/16" (100mm x 68mm x 52mm)
Vertical Rods	36": Top Rod: 43-1/4" (1099mm) Bottom Rod: 37-3/4" (959mm) 48": Top Rod: 56-1/16" (1424mm) Bottom Rod: 37-3/4" (959mm)
Pushbar Projections	Neutral: 3-3/4" (95.3mm) Depressed: 2-15/16" (74.5mm)

ED93 ELECTRIFICATION

Motor Driven Latch Retraction Exit Device-ED93 QLR



APPLICATION

- Electric Latch Retraction feature allows for remote unlatching of exit device. It gives remote keyless access control in high traffic conditions where exit devices are required, such as hospitals, airports and schools. They are also commonly used with automatic door operators
- The ED93 Motor Driven latch retraction (QLR) exit device uses electronic motor technology, which allows faster, quieter and smoother latch pullback compared to the solenoid activated latch retraction
- Motor technology use a substantially lower pulse of current (compared to solenoid activated devices) to retract latch bolt, and using even less power to hold them retracted. It's a perfect choice for hospitals, libraries and any area that requires reduced noise

SPECIFICATION

Voltage Range 22 to 30V DC system protection (unit shuts down when voltage exceeds 30V DC)

Current Draw 1 A for 400ms, 125mA holding (dogged) thereafter electronic travel adjustment approximately 1/4"

FUNCTION

- ED93 Exit device with QLR retracts the latch bolt by power either momentarily or for extended periods of time, allowing for outside access or auto operator integration. When power is out, the device and latch are secured (Fail Secure). Inside push pad of exit device always allows for emergency egress
- Motor driven electric latch retraction (QLR) function is available for ED93 Series Rim, SVR and mortise devices

FEATURES

- Fast, quiet and smooth operation
- Low surge current draw
- Improved efficiency and strength
- Electric dogging
- 6' power cable with quick connect
- Up to 300' wire run with 18/2 wire, provide cost savings by using less power supplies for multiple devices
- Compatible with most 24V DC, 1A (or greater) regulated power supplies. Please see page 12 for power supply options, order separately
- On board self-diagnostics

SWITCHES

A variety of monitoring switches are available for INOX ED93 exit devices. All switches are SPDT (single pull, double throw) and available for the following applications either installed with ED93 exit device or as kits



REX - Request-to-Exit Switch

Request-to-Exit switch sends a signal to alert the control panel that the door is about to be opened by someone intending on entering a secured area

LBM - Latchbolt Monitor Switch

Latchbolt Monitor switch sends a signal to control panel to monitor the position of latchbolt

ELECTRIFIED EXIT ESCUTCHEON TRIM



APPLICATION

Electrified exit escutcheon trim allows outside lever locked or unlocked electronically for access control. It is commonly used for stairwell or access-restricted areas with conditions where fire/life safety codes require a "fail safe" condition, which is not an option with electrified latch retraction devices

SPECIFICATION

Voltage Requirement	12 V AC/DC or 24V AC/D
Amperage	250mA @12V or 150mA @24V

SWITCH

REE - Request to Enter Switch



Request to Enter (REE) Switch can be added to the ED93 escutcheon trim. It is a SPDT (single pull, double throw) switch that sends a signal to alert the control panel that the door is about to be opened by someone intending on entering a secured area

FEATURES

- Continuous duty solenoids for cooler operation during continuous-on applications
- Standard plug-in rectifier allows for an AC or DC power source
- Low current draw

FUNCTION

EDES07NL-EL

Storeroom Electronically Locked (Fail Safe)

Outside lever LOCKED electronically (EL). Switched power (de-energized) allows outside lever to retract latch. Loss of power will cause outside lever unlocked (Fail Safe). Outside key momentarily unlocks outside lever to retract latch. Inside push pad of exit device is always free for immediate egress

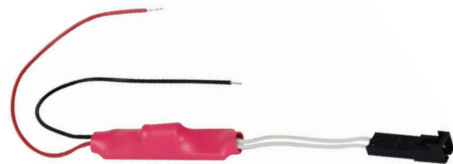
EDES07NL-EU

Storeroom Electronically Unlocked (Fail Secure)

Outside lever UNLOCKED electronically (EU). Switched power (de-energized) locks outside lever. Loss of power will cause outside lever locked (Fail Secure). Outside key momentarily unlocks outside lever to retract latch. Inside push pad of exit device is always free for immediate egress

OPTIONS

CRU12i - Current Reduction Unit



A current reduction unit is recommended in "continuously on" applications to reduce heat and extend solenoid life. The unit intelligently detects 12V to 30V AC/DC input voltages and converts it to a dynamic voltage to power a 12V DC solenoid efficiently. This eliminates the need for manual current adjustment, and increases the life of solenoid. Energizes 12V locking devices only

EXIT ALARM KITS & CYLINDER DOGGING KIT

EXIT ALARM KIT - EDALM

INOX Alarm Kit for ED93 Series has an internal horn that will sound once the push bar has been depressed, signaling that the door has been opened. Alarm is powered by a 9 volt battery and will sound horn intermittently when battery is low. Device includes a standard 1-1/4", "C" keyway mortise cylinder to operate shut-off switch



CYLINDER DOGGING EXIT DEVICE

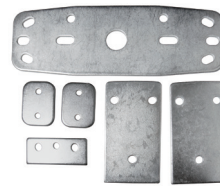
INOX Cylinder dogging is available for Non-Fire-rated devices. Mortise Cylinder 1-1/4" included. Add "-CD" to Exit Device standard item code



GLASS BEAD SHIM KITS

EDGBK70R

For Rim Device, 1/8" Thick



EDGBK70F

For Fire Device, 1/8" Thick



EDGBK70V

For Vertical Device, 1/8" Thick



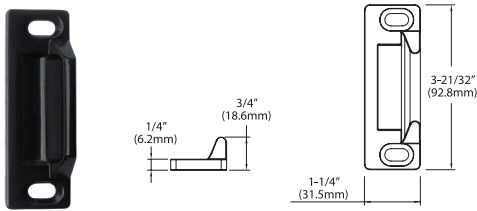
When glass bead shims are used, outside trim may require longer spindle and thru-bolts

OPTIONAL EXIT DEVICE STRIKES AND FILLERS

STRIKES

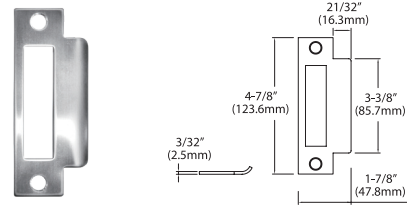
EDLSR-239

Strike for ED93/ED93F Rim Exit Device



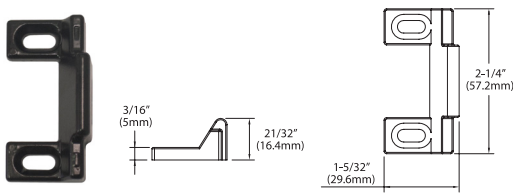
EDLSR-ASA

Strike for ED93/ED93F Mortise Exit Device



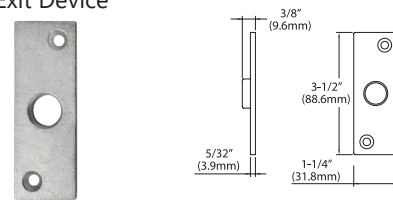
EDLSR-227

Top Strike for ED93-SVR Vertical Rod Exit Device



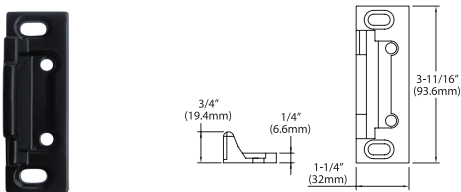
EDLSR-260

Top Strike for ED93F-CVRM/ED93F-CVRW Concealed Vertical Rod Exit Device



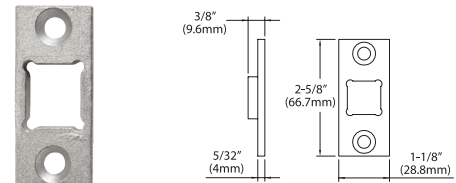
EDLSR-245

Top Strike for ED93F-SVR Vertical Rod Exit Device



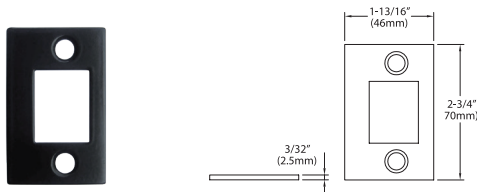
EDLSR-265

Bottom Strike for ED93-CVRM/ED93F-CVRM/ED93-CVRW/ED93F-CVRW Concealed Vertical Rod Exit Devices



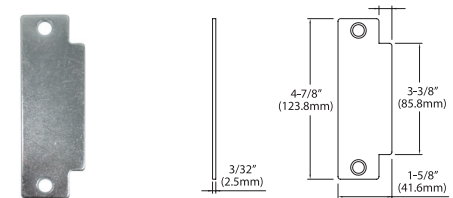
EDLSR-233

Bottom Strike for ED93-SVR/ED93F-SVR Vertical Rod Exit Device



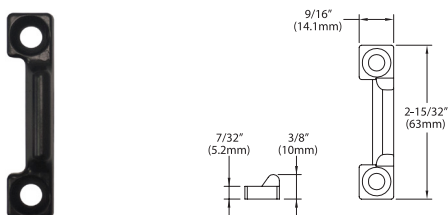
EDSF

Strike Filler for ED93/ED93F Rim Exit Device (EDSF)



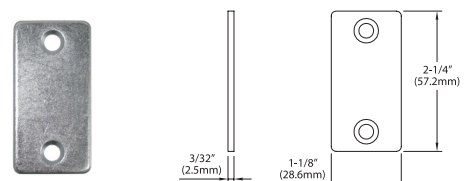
EDLSR-221

Bottom Strike for ED93-SVR Vertical Rod Exit Device




EDLFF

Lock Front Filler for ED70/ED70F Rim Exit Device (EDLFF)



HOW TO ORDER

Stocked ED93 Exit Device

Product	Device	Type	Size	Finish	Option
ED93 1	F 2	-RIM 3	36 4	-19G 5	-PA 6
 <p>ED93 Series</p>		<p>TYPE</p>		<p>SIZE</p>	
<p>PRODUCT</p>		<p>TYPE</p>		<p>SIZE</p>	
<p>Blank Panic Exit F Fire Exit</p>		<p>RIM Rim Device (ANSI: Type 1) SVR Surface Vertical Rod (ANSI: Type 2) LBR Less Bottom Rod (PAIR ONLY)(ANSI: Type 2) MED Mortise Exit Device, Exit Only (ANSI: Type 3) MED08 Mortise Exit Device, Entry (ANSI: Type 3) MED09 Mortise Exit Device, Storeroom (ANSI: Type 3) MED14 Mortise Exit Device, Passage (ANSI: Type 3) CVRM Concealed Vertical Rod for Wood Door (ANSI: Type 7) CVRW Concealed Vertical Rod for Metal Door (ANSI: Type 8)</p>		<p>36 36" 48 48" 3684 36" x 84" 3696 36" x 96" 4884 48" x 84" 4896 48" x 96"</p>	

5 FINISH

Standard:



32D



19G



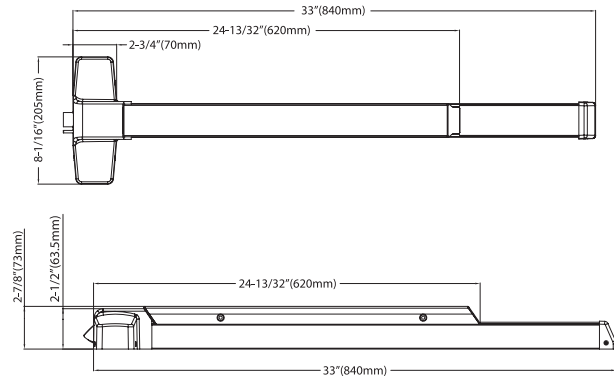
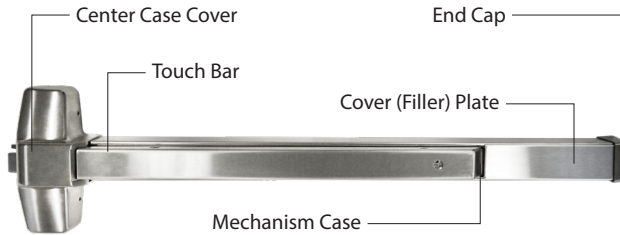
DU

6 OPTION

- CD Cylinder Dogging (Non-Fire Device Only)
- QLR Motor Driven Quiet Latch Retraction
- REX Device w/Request to Exit Switch
- LBM Device w/Latch Bolt Monitor switch
- ALM Exit Device Alarm
- PA Panic Armor

COMMERCIAL EXIT DEVICE ED70/ED70F

ANSI Grade 1



SPECIFICATION

Device Functions	Trims available separately
Device Lengths	2'2" to 3' (660mm to 914mm) 2'9" to 4' (838mm to 1219mm)
Strike	Dull Black Rim (EDLSR-255)
Dogging Feature	Hex Key Dogging available on Non-Fire Rated devices only
Dogging Options	Cylinder Dogging available on complete devices only, not sold as a separate kit
Electric Options	Alarm Kit 36/48" available includes 1/14" C keyway mortise cylinder to operate the shut off switch
Miscellaneous	GBK Glass Bead Kit
Fasteners & Sex Bolts	Furnished with wood & machine screws. Thru-bolts are standard on Fire Rated devices
Latch Bolt	Stainless Steel 3/4" (19mm) throw
Device Centerline from Finished Floor	Refer to local and state regulations for standard mounting height
Center Case Dimensions	7-7/8" x 2-9/16" x 1-7/8" (200mm x 65mm x 48mm)
Mechanism Case Dimensions	1-9/16" x 2" (41mm x 51mm)
Pushbar Projections	Neutral 2-1/2" (64mm) Depressed 1-3/4" (44mm)

STANDARD FINISHES

- 32D Satin Stainless Steel
- 19G Graphite Black
- DU Duro/Dark Bronze Painted
- AL Aluminum Painted

For additional finish options not listed, contact Sales Department for MOQ and lead times

APPLICATION AND FEATURES

- INOX ED70 and ED70F Rim Exit Devices are suited for most single door applications. They can also be used on double doors when using a mullion.
- INOX ED70 and ED70F Rim Exit Devices are non-handed with a universal design that allows them to easily retrofit the Von Duprin 98/99 series and Sargent 8800 series installations when paired with INOX exit device trim.
- INOX ED70 and ED70F Rim Exit Devices will fit all doors up to 36" in width and 1-3/4" in thickness. 48" width devices can be ordered as an option. Cylinder dogging is also available as an option on a non-rated device.

CODE COMPLIANCE

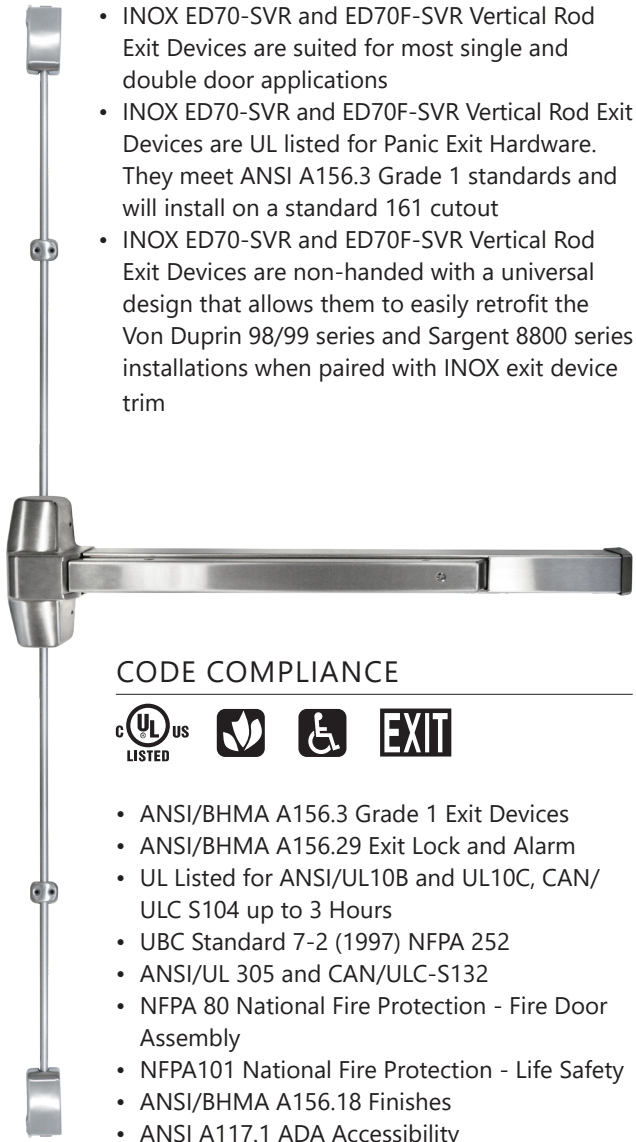


- ANSI/BHMA A156.3 Grade 1 Exit Devices
- ANSI/BHMA A156.29 Exit Lock and Alarm
- UL Listed for ANSI/UL10B and UL10C, CAN/ULC S104 up to 3 Hours
- UBC Standard 7-2 (1997) NFPA 252
- ANSI/UL 305 and CAN/ULC-S132
- NFPA 80 National Fire Protection - Fire Door Assembly
- NFPA101 National Fire Protection - Life Safety
- ANSI/BHMA A156.18 Finishes
- ANSI A117.1 ADA Accessibility

SURFACE MOUNTED VERTICAL ROD ED70-SVR/ED70F-SVR

ANSI Grade 1

APPLICATION AND FEATURES



- INOX ED70-SVR and ED70F-SVR Vertical Rod Exit Devices are suited for most single and double door applications
- INOX ED70-SVR and ED70F-SVR Vertical Rod Exit Devices are UL listed for Panic Exit Hardware. They meet ANSI A156.3 Grade 1 standards and will install on a standard 161 cutout
- INOX ED70-SVR and ED70F-SVR Vertical Rod Exit Devices are non-handed with a universal design that allows them to easily retrofit the Von Duprin 98/99 series and Sargent 8800 series installations when paired with INOX exit device trim

CODE COMPLIANCE



- ANSI/BHMA A156.3 Grade 1 Exit Devices
- ANSI/BHMA A156.29 Exit Lock and Alarm
- UL Listed for ANSI/UL10B and UL10C, CAN/ULC S104 up to 3 Hours
- UBC Standard 7-2 (1997) NFPA 252
- ANSI/UL 305 and CAN/ULC-S132
- NFPA 80 National Fire Protection - Fire Door Assembly
- NFPA101 National Fire Protection - Life Safety
- ANSI/BHMA A156.18 Finishes
- ANSI A117.1 ADA Accessibility

STANDARD FINISHES

- 32D Satin Stainless Steel
- 19G Graphite Black
- DU Duro/Dark Bronze Painted

For additional finish options not listed, contact Sales Department for MOQ and lead times

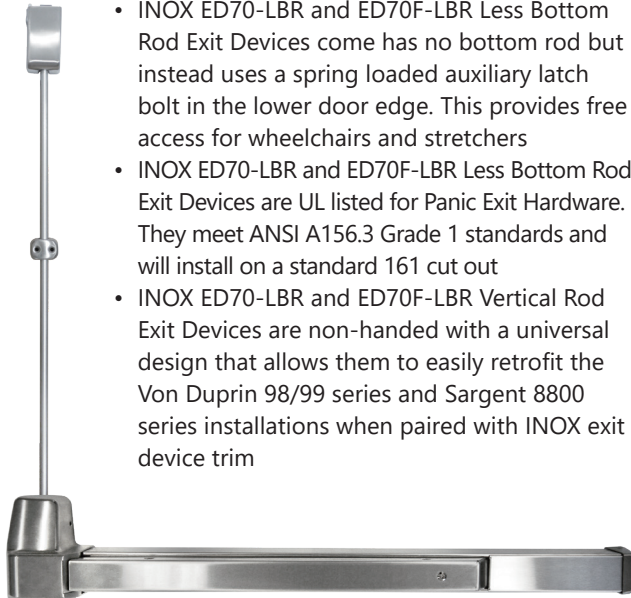
SPECIFICATION

Device Functions	Trims available separately
Device Lengths	2'2" to 3' (660mm to 914mm) 2'9" to 4' (838mm to 1219mm)
Strike	Top Dull Black Strike (EDLSR-227) Bottom Dull Black Strike (EDLSR-221)
Dogging Feature	Hex Key Dogging available on Non-Fire Rated devices only
Dogging Options	Cylinder Dogging available on complete devices only, not sold as a separate kit
Electric Options	Alarm Kit 36"/48" available includes 1/14" "C" keyway mortise cylinder to operate the shut off switch
Miscellaneous	GBK Glass Bead Kit
Fasteners & Sex Bolts	Furnished with wood & machine screws. Thru-bolts are standard on Fire Rated devices
Latch Bolt	Stainless Steel 3/4" (19mm) throw
Device Centerline from Finished Floor	Refer to local and state regulations for standard mounting height
Center Case Distance	7-7/8" x 2-9/16" x 1-7/8" (200mm x 65mm x 48mm)
Mechanism Case Dimensions	1-9/16" x 2" (41mm x 51mm)
Top & Bottom Latch Case	3-15/16" x 2-1/8" x 1-3/8" (100mm x 54mm x 35mm)
Top & Bottom Latch Case - Fire	3-15/16" x 2-11/16" x 2-1/16" (100mm x 68mm x 52mm)
Vertical Rod 36" Door	Top: 43-1/4" (1099mm) Bottom: 37-3/4" (959mm)
Vertical Rod 48" Door	Top: 56-1/16" (1424mm) Bottom: 37-3/4" (959mm)
Pushbar Projections	Neutral 2-1/2" (64mm) Depressed 1-3/4" (44mm)

LESS BOTTOM ROD EXIT DEVICE ED70-LBR/ED70F-LBR

ANSI Grade 1

APPLICATION AND FEATURES



- INOX ED70-LBR and ED70F-LBR Less Bottom Rod Exit Devices come has no bottom rod but instead uses a spring loaded auxiliary latch bolt in the lower door edge. This provides free access for wheelchairs and stretchers
- INOX ED70-LBR and ED70F-LBR Less Bottom Rod Exit Devices are UL listed for Panic Exit Hardware. They meet ANSI A156.3 Grade 1 standards and will install on a standard 161 cut out
- INOX ED70-LBR and ED70F-LBR Vertical Rod Exit Devices are non-handed with a universal design that allows them to easily retrofit the Von Duprin 98/99 series and Sargent 8800 series installations when paired with INOX exit device trim

CODE COMPLIANCE



Aux Fire Latch Assembly

- ANSI/BHMA A156.3 Grade 1 Exit Devices
- ANSI/BHMA A156.29 Exit Lock and Alarm
- UL Listed for ANSI/UL10B and UL10C, CAN/ULC S104 up to 3 Hours
- UBC Standard 7-2 (1997) NFPA 252
- ANSI/UL 305 and CAN/ULC-S132
- NFPA 80 National Fire Protection - Fire Door Assembly
- NFPA101 National Fire Protection - Life Safety
- ANSI/BHMA A156.18 Finishes
- ANSI A117.1 ADA Accessibility

SPECIFICATION

Device Functions	Trims available separately
Device Lengths	2'2" to 3' (660mm to 914mm) 2'9" to 4' (838mm to 1219mm)
Strike	Top Dull Black (EDLSR-227)
Dogging Feature	Hex Key Dogging available on Non-Fire Rated devices only
Dogging Options	Cylinder Dogging available on complete devices only, not sold as a separate kit
Electric Options	Alarm Kit 36" and 48" available
Miscellaneous	GBK Glass Bead Kit
Fasteners & Sex Bolts	Furnished with wood & machine screws. Thru-bolts are standard on Fire Rated devices
Latch Bolt	Stainless Steel 3/4" (19mm) throw
Device Centerline from Finished Floor	Refer to local and state regulations for standard mounting height
Center Case Distance	7-7/8" x 2-9/16" x 1-7/8" (200mm x 65mm x 48mm)
Mechanism Case Dimensions	1-9/16" x 2" (41mm x 51mm)
Top Latch Case	3-15/16" x 2-1/8" x 1-3/8" (100mm x 54mm x 35mm)
Top Fire Latch Case	3-15/16" x 2-11/16" x 2-1/16" (100mm x 68mm x 52mm)
Vertical Rod 36" Door	Top: 43-1/4" (1099mm)
Vertical Rod 48" Door	Top: 56-1/16" (1424mm)
Pushbar Projections	Neutral 2-1/2" (64mm) Depressed 1-3/4" (44mm)

STANDARD FINISHES

- 32D Satin Stainless Steel
- 19G Graphite Black
- DU Duro/Dark Bronze Painted

For additional finish options not listed, contact Sales Department for MOQ and lead times

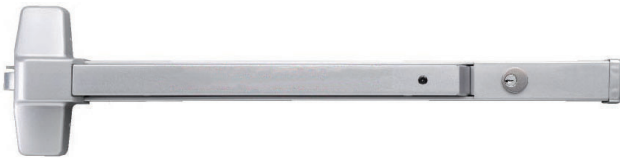
ALARM KITS & CYLINDER DOGGING DEVICE

ALARM KITS & CYLINDER DOGGING DEVICE



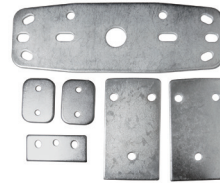
INOX alarm kit for ED70 Series has an internal horn that will sound once the push bar has been depressed, signaling that the door has been opened. The alarm is powered by a 9 volt battery, and will sound horn intermittently when the battery is low. The device includes a standard 1-1/4", "C" keyway mortise cylinder to operate the shut off switch.

CYLINDER DOGGING EXIT DEVICE



INOX Cylinder dogging is available for non-rated devices and only available in full devices on the ED70 Series, not as a separate kit. Mortise Cylinder 1-1/4" included. Add "-CD" to Exit Device standard item code.

GLASS BEAD SHIM KITS



EDGBK70R

For Rim Device, 1/8" Thick



EDGBK70V

For Vertical Device, 1/8" Thick



EDGBK70F

For Fire Device, 1/8" Thick

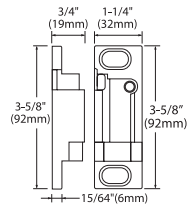
When glass bead shims are used, outside trim may require longer spindle and thru-bolts.

OPTIONAL EXIT DEVICE STRIKES AND FILLERS

STRIKES



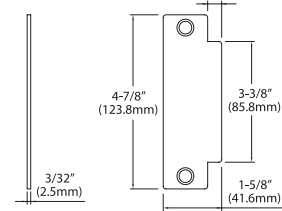
ED70LSR-255



Strike for ED70/ED70F Rim Exit Device



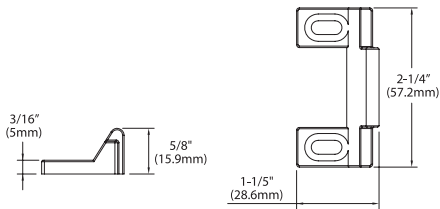
EDSF



Strike Filler for ED70/ED70F Rim Exit Device



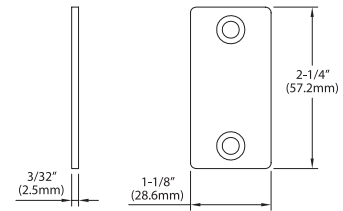
EDLSR-227



Top Strike for ED70-SVR/ED70F-SVR Vertical Rod Exit Device
Strike for ED70-LBR/ED70F-LBR Less Bottom Rod Exit Device



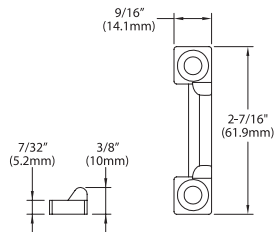
EDLFF



Lock Front Filler for ED70/ED70F Rim Exit Device




EDLSR-221



Bottom Strike for ED70-SVR/ED70F-SVR Vertical Rod Exit Device

HOW TO ORDER

Stocked ED70 Exit Device

Product	Device	Type	Size	Finish	Option
ED70 1	F 2	-RIM 3	36 4	-19G 5	-CD 6
PRODUCT		TYPE		SIZE	
 ED70 Series		RIM	Rim Device (ANSI: Type 1)	36	36"
		SVR	Surface Vertical Rod (ANSI: Type 2)	48	48"
		LBR	Less Bottom Rod (PAIR ONLY)(ANSI: Type 2)	3684	36" x 84"
				3696	36" x 96"
				4884	48" x 84"
				4896	48" x 96"
DEVICE					
Blank		Panic Exit			
F		Fire Exit			

5 FINISH

Standard:



32D



19G



AL



DU

6 OPTION

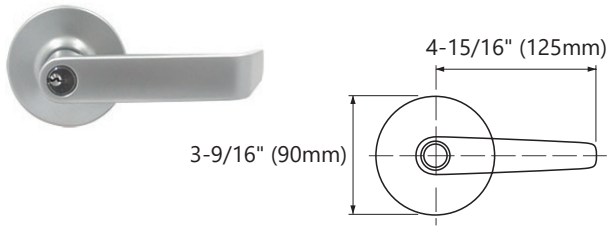
CD Cylinder Dogging (Non-Fire Device Only)

ALM Exit Device Alarm

TRIM OPTIONS FOR RIM, SVR, LBR

Compatible with ED93/ED70 Exit Devices

CYLINDRICAL TRIM



Projection 2-1/2"

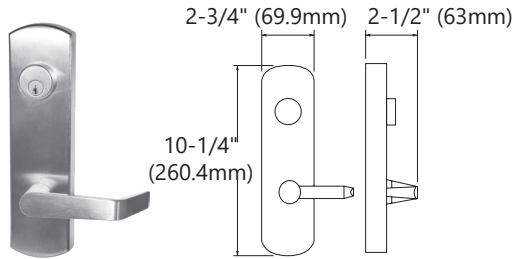
Cylinder Size In-lever for Entry & Storeroom function

STANDARD FINISHES

- 26D Satin Chrome
- For additional finish options not listed, contact Sales Department for MOQ and lead times*

Images	Description	Part Number
	Entry Function (ANSI 08)	EDCR07EN
	Night Latch Function (ANSI 09)	EDCR07NL
	Passage Function (ANSI 14)	EDCR07BE
	Dummy Function (ANSI 02)	EDCR07DM

ESCUTCHEON TRIM



Escutcheon Size 2-3/4" x 10-1/4"
(70mm x 260mm)

Cylinder Size 1-1/8" Mortise Cylinder
Entry & Storeroom function

STANDARD FINISHES

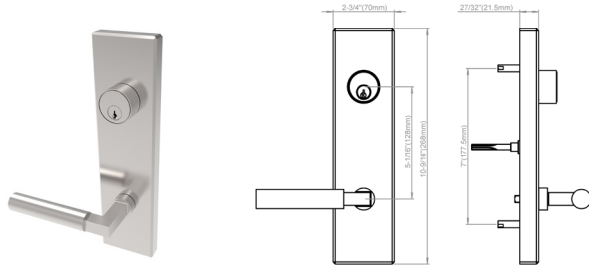
- 32D Satin Stainless Steel
 - 19G Graphite Black
 - 26D Satin Chrome
- For additional finish options not listed, contact Sales Department for MOQ and lead times*

Images	Description	Part Number
	Entry Function Mortise with Cylinder (ANSI 08)	EDES07 EN
	Night Latch / Storeroom Function Mortise with Cylinder (ANSI 09)	EDES07 NL* <i>Electrified trim function (EL/EU) available</i>
	Passage Function (ANSI 14)	EDES07 BE
	Dummy Function (ANSI 02)	EDES07 DM

TRIM OPTIONS FOR RIM, SVR, LBR

Compatible with ED93/ED70 Exit Devices

XSF TRIM WITH DESIGNER LEVER OPTIONS



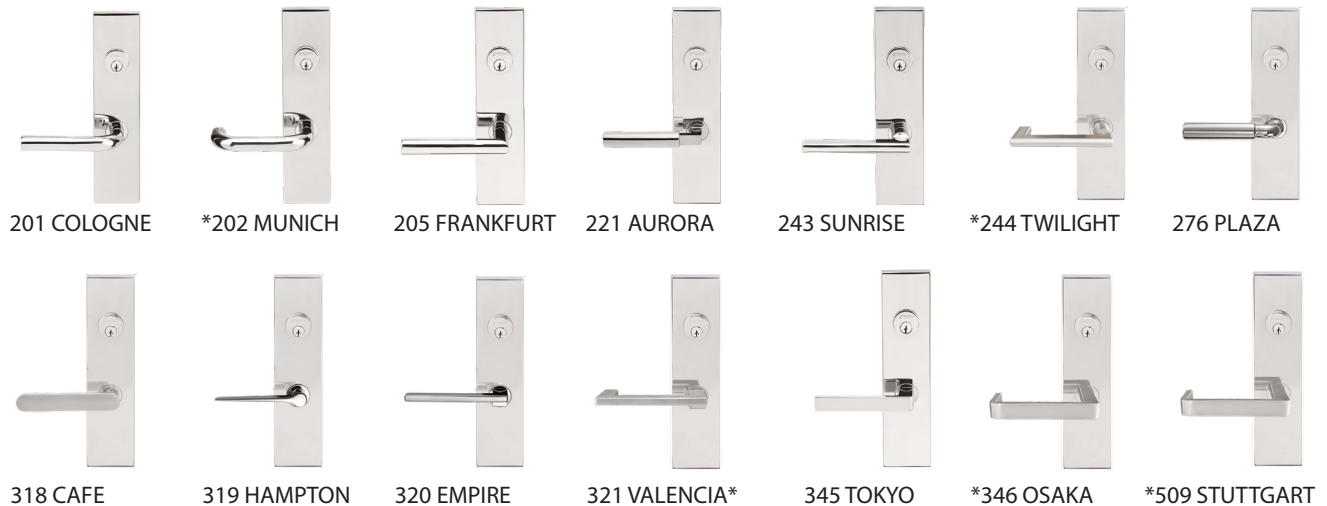
Escutcheon Size 2-3/4" x 10-9/16"
(70mm x 268mm)

Cylinder Size 1-1/8" Mortise Cylinder
Entry & Storeroom function

STANDARD FINISHES

- 32D Satin Stainless Steel
- For additional finish options not listed, contact Sales Department for MOQ and lead times*

Images	Description	Part Number
	Entry Function Mortise with Cylinder (ANSI 08)	EDES-XSF___EN
	Night Latch / Storeroom Function Mortise with Cylinder (ANSI 09)	EDES-XSF___NL
	Passage Function (ANSI 14)	EDES-XSF___BE
	Dummy Function (ANSI 02)	EDES-XSF___DM



* Return-to-Door Lever Designs comply with California and other state building codes for door openings
Entry 3 digit designer lever code for outside escutcheon

TRIM OPTIONS FOR RIM, SVR, LBR

Compatible with ED93/ED70 Exit Devices

THUMB-PIECE & PLATE TRIM

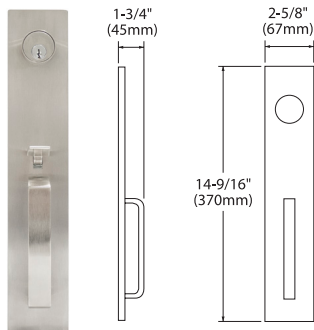


Plate Size	14-9/16" x 2-5/8" (370mm x 67mm)
Cylinder Size	1-1/4" Mortise Cylinder Entry & Storeroom function

Images	Description	Part Number
	Entry Function Mortise with 1-1/4" Cylinder (ANSI 05)	EDTP10 EN
	Night Latch Function Mortise with 1-1/4" Cylinder (ANSI 06)	EDTP10 NL
	Night Latch RIM Function (ANSI 03)	EDPP10 NL
	Passage Function (ANSI 15)	EDTP10 BE
	Dummy Function (ANSI 02)	EDPP10 DM

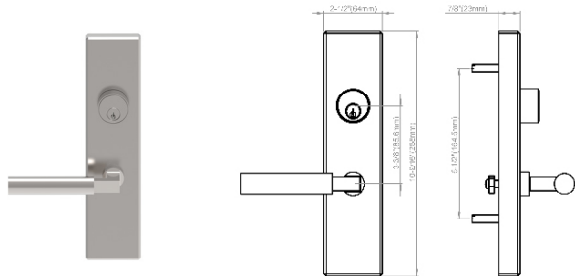
STANDARD FINISHES

- 32D Satin Stainless Steel
- For additional finish options not listed, contact Sales Department for MOQ and lead times*

TRIM OPTIONS FOR CONCEALED VERTICAL ROD

Compatible with ED93 Exit Device

XSF TRIM WITH DESIGNER LEVER OPTIONS



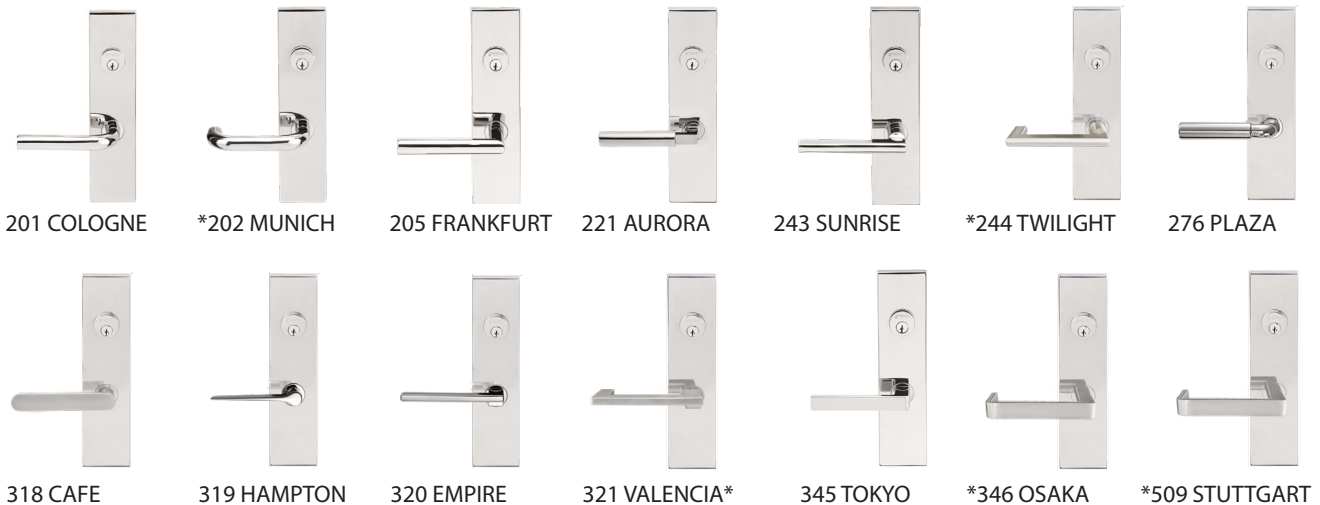
Escutcheon Size 2-1/2" x 10-9/16"
(64mm x 268mm)

Cylinder Size 1-1/4" Mortise Cylinder
Entry & Storeroom function

STANDARD FINISHES

- 32D Satin Stainless Steel
- For additional finish options not listed, contact Sales Department for MOQ and lead times*

Images	Description	Part Number
	Entry Function Mortise with Cylinder (ANSI 08)	EDCV-XSF___EN
	Night Latch / Storeroom Function Mortise with Cylinder (ANSI 09)	EDCV-XSF___NL
	Passage Function (ANSI 14)	EDCV-XSF___BE
	Dummy Function (ANSI 02)	EDCV-XSF___DM

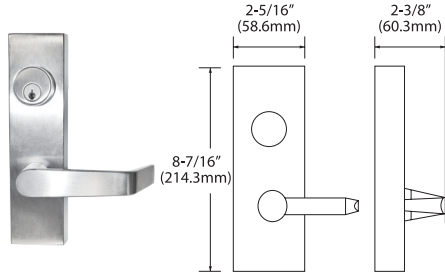


* Return-to-Door Lever Designs comply with California and other state building codes for door openings
Entry 3 digit designer lever code for outside escutcheon

TRIM OPTIONS FOR CONCEALED VERTICAL ROD

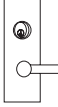
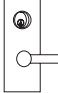
Compatible with ED93 Exit Device

ESCUTCHEON TRIM



Escutcheon Size 8-7/16" x 2-5/16"
(214mm x 58mm)

Cylinder Size 1-1/4" Mortise Cylinder
Entry & Storeroom function

Images	Description	Part Number
	Entry Function with 07 lever with Cylinder (ANSI 08)	ED93CES07 EN
	Night Latch with 07 lever with Cylinder(ANSI 09)	ED93CES07 NL

STANDARD FINISHES

- 26D Satin Chrome

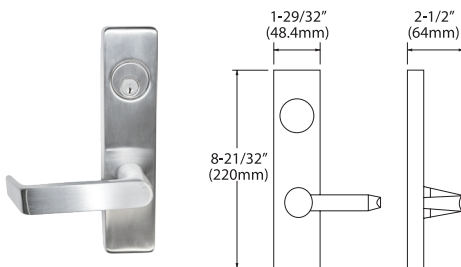
For additional finish options not listed, contact Sales Department for MOQ and lead times

For additional finish options not listed, contact Sales Department for MOQ and lead times

TRIM OPTIONS FOR MORTISE EXIT DEVICE

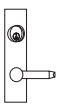
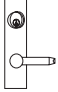
Compatible with ED93 Exit Device

ESCUTCHEON TRIM



Escutcheon Size 8-21/32" x 1-29/32"
(220mm x 48mm)

Cylinder Size 1-1/4" Mortise Cylinder
Entry & Storeroom function

Images	Description	Part Number
	Entry Function with 07 lever with Cylinder (ANSI 08)	ED93MES07 EN
	Night Latch WITH 07 lever with Cylinder (ANSI 09)	ED93MES07 NL

STANDARD FINISHES

- 26D Satin Chrome

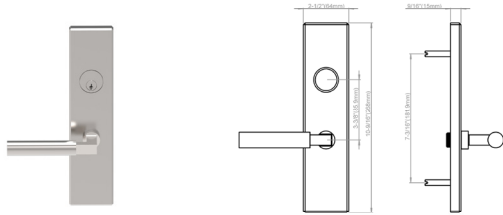
For additional finish options not listed, contact Sales Department for MOQ and lead times

For additional finish options not listed, contact Sales Department for MOQ and lead times

TRIM OPTIONS FOR MORTISE EXIT DEVICE

Compatible with ED93 Exit Device

XSF TRIM WITH DESIGNER LEVER OPTIONS



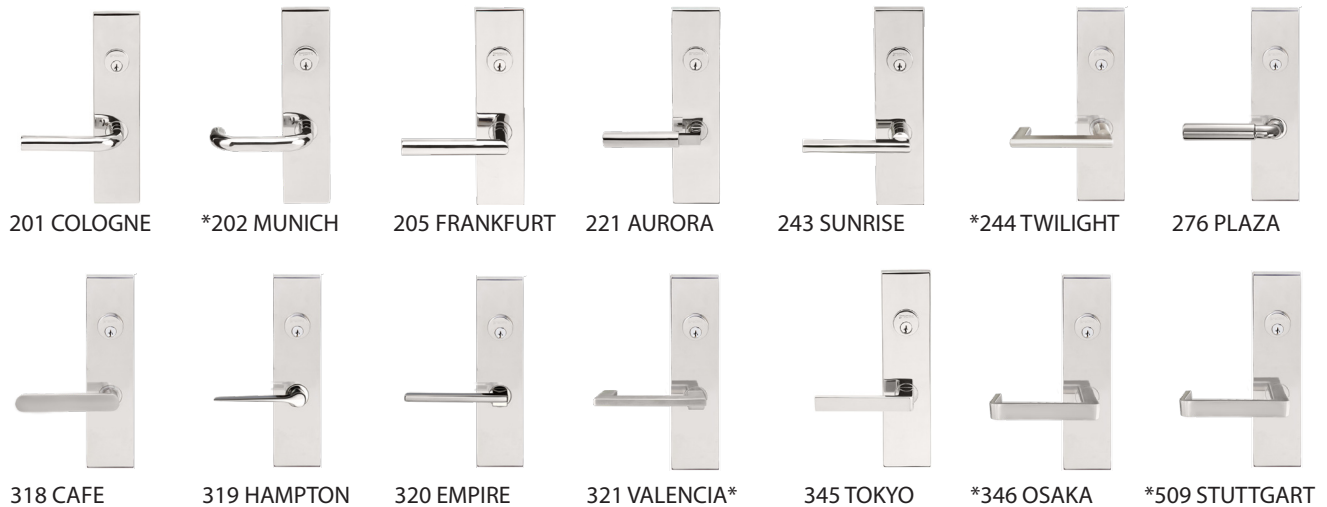
Escutcheon Size 2-1/2" x 10-9/16"
(64mm x 268mm)

Cylinder Size 1-1/2" Mortise Cylinder
Entry & Storeroom function

STANDARD FINISHES

- 32D Satin Stainless Steel
- For additional finish options not listed, contact Sales Department for MOQ and lead times*

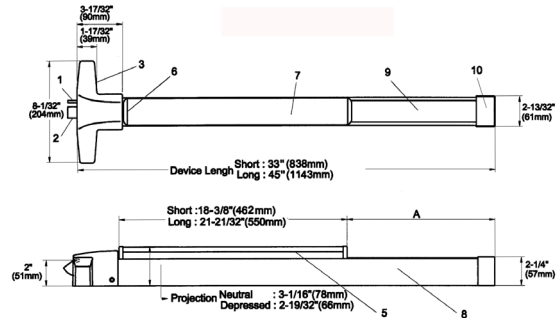
Images	Description	Part Number
	Entry Function Mortise with Cylinder (ANSI 08)	EDML-XSF___EN
	Night Latch / Storeroom Function Mortise with Cylinder (ANSI 09)	EDML-XSF___NL
	Passage Function (ANSI 14)	EDML-XSF___BE
	Dummy Function (ANSI 02)	EDML-XSF___DM



* Return-to-Door Lever Designs comply with California and other state building codes for door openings
Entry 3 digit designer lever code for outside escutcheon

NARROW STILE EXIT DEVICE ED81/ED81F

ANSI Grade 1



SPECIFICATION

Device Functions	Trims available separately
Device Lengths	33" (838mm) 45" (1143mm)
Strikes	Dull Black RIM (EDLSR-239)
Dogging Feature	Hex Key Dogging available on Non-Fire Rated devices only
Dogging Options	Cylinder Dogging available on complete devices only, not sold as a separate kit
Fasteners & Sex Bolts	Furnished with wood & machine screws. Thru-bolts are standard on Fire Rated devices
Latch Bolt	Stainless Steel 3/4" (19mm) throw
Center Case Distance	8-1/32" x 1-15/16" x 2" (204mm x 71mm x 51mm)
Mechanism Case Dimensions	2-3/16" x 1-15/16" (55.4mm x 49.1mm)
Pushbar Projections	Neutral 3-1/16" (78mm) Depressed 2-19/32" (66mm)

STANDARD FINISHES

- 32D Satin Stainless Steel
- 10B Oil Rubbed Bronze

For additional finish options not listed, contact Sales Department for MOQ and lead times

APPLICATION AND FEATURES

- INOX ED81 and ED81F RIM Exit Devices with narrow design are suited for most single door applications. They can also be used on double doors when using a mullion
- ED81 and ED81F RIM Exit Devices are UL listed for Panic Exit Hardware and meet ANSI A156.3 Grade 1 standards
- INOX ED81 and ED81F RIM Exit Devices will fit all doors up to 36" in width and 1-3/4" in thickness. 48" in width devices can be ordered as an option

CODE COMPLIANCE

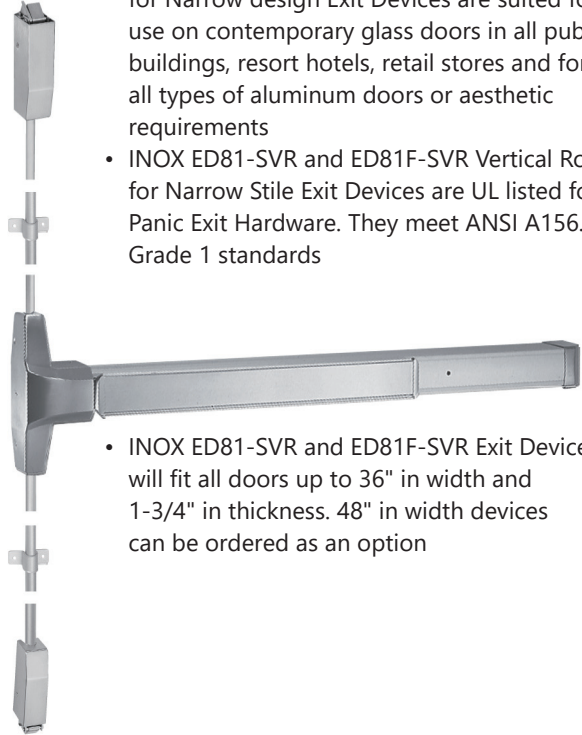


- ANSI/BHMA A156.3 Grade 1 Exit Devices
- ANSI/BHMA A156.29 Exit Lock and Alarm
- UL Listed for ANSI/UL10B and UL10C, CAN/ULC S104 up to 3 Hours
- UBC Standard 7-2 (1997) NFPA 252
- ANSI/UL 305 and CAN/ULC-S132
- NFPA 80 National Fire Protection - Fire Door Assembly
- NFPA101 National Fire Protection - Life Safety
- ANSI/BHMA A156.18 Finishes
- ANSI A117.1 ADA Accessibility
- Electrification - ANSI/UL634, ANSI/UL294, ANSI/UL10C

SURFACE MOUNTED VERTICAL ROD ED81-SVR/ED81F-SVR

ANSI Grade 1

APPLICATION AND FEATURES



- INOX ED81-SVR and ED81F-SVR Vertical Rod for Narrow design Exit Devices are suited for use on contemporary glass doors in all public buildings, resort hotels, retail stores and for all types of aluminum doors or aesthetic requirements
- INOX ED81-SVR and ED81F-SVR Vertical Rod for Narrow Stile Exit Devices are UL listed for Panic Exit Hardware. They meet ANSI A156.3 Grade 1 standards
- INOX ED81-SVR and ED81F-SVR Exit Devices will fit all doors up to 36" in width and 1-3/4" in thickness. 48" in width devices can be ordered as an option

SPECIFICATION

Trims	Trims available separately
Device Lengths	29" to 36" (736mm to 914mm) 33" to 48" (838mm to 1219mm)
Strikes	Standard (EDLSR-801) Fire Rated (EDLSR-802)
Dogging Feature	Hex Key Dogging available on Non-Fire Rated Devices Only
Dogging Option	Cylinder Dogging available on complete devices only, not sold as a separate kit
Electric Options	EDALM - Exit Alarm QLR- Quiet Latch Retraction REX - Request to Exit LBM - Latch Bolt Monitoring
Miscellaneous Options	GBK Glass Bead Kit
Fasteners & Sex Bolts	Furnished with wood & machine screws. Thru-bolts standard on Fire Rated devices
Center Case Distance	8-1/32" x 1-15/16" x 2" (204mm x 71mm x 51mm)
Mechanism Case Dimensions	2-3/16" x 1-15/16" (55.4mm x 49.1mm)
Pushbar Projections	Neutral 3-1/16" (78mm) Depressed 2-19/32" (66mm)

CODE COMPLIANCE

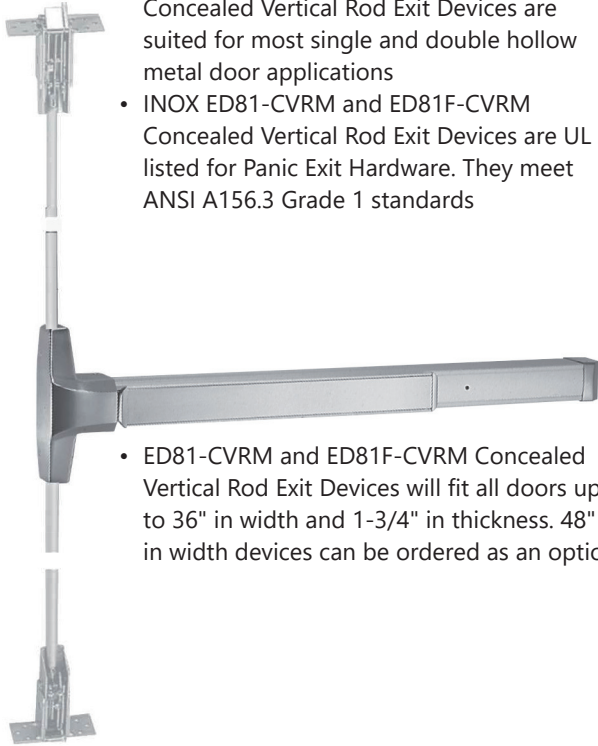


- ANSI/BHMA A156.3 Grade 1 Exit Devices
- ANSI/BHMA A156.29 Exit Lock and Alarm
- UL Listed for ANSI/UL10B and UL10C, CAN/ULC S104 up to 3 Hours
- UBC Standard 7-2 (1997) NFPA 252
- ANSI/UL 305 and CAN/ULC-S132
- NFPA 80 National Fire Protection - Fire Door Assembly
- NFPA101 National Fire Protection - Life Safety
- ANSI/BHMA A156.18 Finishes
- ANSI A117.1 ADA Accessibility
- Electrification - ANSI/UL634, ANSI/UL294, ANSI/UL10C

CONCEALED VERTICAL ROD ED81-CVRM/ED81F-CVRM

ANSI Grade 1

APPLICATION AND FEATURES



- INOX ED81-CVRM and ED81F-CVRM Concealed Vertical Rod Exit Devices are suited for most single and double hollow metal door applications
- INOX ED81-CVRM and ED81F-CVRM Concealed Vertical Rod Exit Devices are UL listed for Panic Exit Hardware. They meet ANSI A156.3 Grade 1 standards
- ED81-CVRM and ED81F-CVRM Concealed Vertical Rod Exit Devices will fit all doors up to 36" in width and 1-3/4" in thickness. 48" in width devices can be ordered as an option

STANDARD FINISHES

- 32D Satin Stainless Steel
- 10B Oil Rubbed Bronze

For additional finish options not listed, contact Sales Department for MOQ and lead times

SPECIFICATION

Device Functions	Trims available separately
Device Lengths	33" (838mm) 45" (1143mm)
Strike	Top Dull Black (EDLSR-260) Bottom Dull Black (EDLSR-265)
Dogging Options	Cylinder Dogging available on complete devices only, not sold as a separate kit
Fasteners & Sex Bolts	Furnished with wood & machine screws. Thru-bolts are standard on Fire Rated devices
Center Case Distance	8-1/32" x 2-25/32" x 2" (204mm x 71mm x 51mm)
Mechanism Case Dimensions	2-3/16" x 1-15/16" (55.4mm x 49.1mm)
Pushbar Projections	Neutral 3-1/16" (78mm) Depressed 2-19/32" (66mm)

CODE COMPLIANCE



- ANSI/BHMA A156.3 Grade 1 Exit Devices
- ANSI/BHMA A156.29 Exit Lock and Alarm
- UL Listed for ANSI/UL10B and UL10C, CAN/ULC S104 up to 3 Hours
- UBC Standard 7-2 (1997) NFPA 252
- ANSI/UL 305 and CAN/ULC-S132
- NFPA 80 National Fire Protection - Fire Door Assembly
- NFPA101 National Fire Protection - Life Safety
- ANSI/BHMA A156.18 Finishes
- ANSI A117.1 ADA Accessibility
- Electrification - ANSI/UL634, ANSI/UL294, ANSI/UL10C

ED81MED NARROW STILE ELECTRIFICATION MOTOR DRIVEN LATCH RETRACTION EXIT DEVICE

ANSI Grade 1



SPECIFICATION

Voltage Range	22 to 30V DC Systems Shuts down if voltage exceeds 30V DC
Current Draw	1A for 400ms to retract, then 125mA to maintain electronic dogging

APPLICATION

Quiet Latch Retraction (QLR) feature allows for remote unlatching of exit device. It gives remote keyless access control in high traffic conditions where exit devices are required, such as hospitals, airports and schools. It is also commonly used with automatic door operators

ED81 QLR exit device uses electronic motor technology, which allows faster, quieter and smoother latch pullback compared to the solenoid activated latch retraction. Motor technology uses a substantially lower pulse of current (compared to solenoid activated devices) to retract latch bolt, and uses even less power to hold latch bolt retracted. It's a perfect choice for hospitals, libraries and any area that requires reduced noise

SWITCHES



All switches are SPDT (single pull, double throw) and available for the following applications either installed with ED81 Narrow Stile Exit Device or as kits:

REX - Request-to-Exit Switch

Request-to-Exit switch sends a signal to alert the control panel that the door is about to be opened by someone intent on exiting a secured area

LBM - Latchbolt Monitor Switch

Latchbolt Monitor switch sends a signal to control panel to monitor the position of latchbolt

FEATURES

- Fast, quiet and smooth operation
- Low surge current draw
- Greater efficiency and strength
- Electric dogging
- 6' power cable with quick connect
- Up to 300' wire run with 18/2 wire, providing cost savings by using less power supplies for multiple devices
- Compatible with most 24V DC, 1A (or greater) regulated power supplies. For power supply options, order separately
- On board self-diagnostic

FUNCTION

ED81 Narrow Stile Exit Device with QLR retracts the latch bolt by power either momentarily or for extended periods of time, allowing for outside access or auto operator integration. When power is out, the device and latch are locked (Fail Secure). Inside push pad of exit device always allows for free egress

Motor-driven QLR function is available for ED81 Series RIM, SVR and mortise devices

EDNS07 ELECTRIFIED TRIM NARROW STILE EXIT DEVICE

ANSI Grade 1



APPLICATION

- Electrified exit escutcheon trim allows outside lever locked or unlocked electronically for access control
- It is commonly used for stairwell or access restricted area with conditions where fire/life safety codes require a "fail safe" condition, which is not an option with electrified latch retraction device

SWITCH



Switch is SPDT (single pull, double throw) and available either installed with ED81 Narrow Stile Exit Device or as a kit:

REE - Request-to-Enter Switch

Switch can be added to the ED81 escutcheon trim. It is a SPDT (single pull, double throw) switch that sends a signal to alert the control panel that the door is about to be opened by someone intending to enter a secured area

SPECIFICATION

Voltage Range 24V AC/DC Systems

AMP Range 150mA @24V

FEATURES

Continuous duty solenoids for cooler operation during continuous-on applications
Standard plug-in rectifier allows for either AC or DC power source
Low current draw

FUNCTION

EDES07NL-EL

Storeroom Electronically Locked (Fail Safe)

Outside lever LOCKED electronically (EL). Switched power (de-energized) allows outside lever to retract latch. Loss of power will cause outside lever unlocked (Fail Safe). Outside key momentarily unlocks outside lever to retract latch. Inside push pad of exit device is always free for immediate egress.

EDES07NL-EU

Storeroom Electronically Unlocked (Fail Secure)

Outside lever UNLOCKED electronically (EU). Switched power (de-energized) locks outside lever. Loss of power will cause outside lever locked (Fail Secure). Outside key momentarily unlocks outside lever to retract latch. Inside push pad of exit device is always free for immediate egress

OPTIONAL TRIM FOR RIM, SVR, CVR

THUMBPIECE AND PLATE TRIM

Plate Size: 11-13/16" x 1-25/32"
 Cylinder: 1/4" Mortise Cylinder included for Classroom function. Rim Cylinder included for Night Latch function. Schlage C keyway standard. Specify "IC" for IC Core Cylinders. Other keyway available by special order



Function	Classroom
ANSI	08
Item No.	ED81TP10CL
Cylinder Type	Mortise 1/4"



Function	Night Latch
ANSI	03
Item No.	ED81TP10NL
Cylinder Type	Rim



Function	Passage
ANSI	14
Item No.	ED81TP10BE
Cylinder Type	None



Function	Dummy
ANSI	02
Item No.	ED81TP10DM
Cylinder Type	None

Trim for Concealed Vertical Rod Exit Device (CVR)

THUMBPIECE AND PLATE TRIM

Plate Size: 11-13/16" x 1-25/32"
 Cylinder: 1/4" Mortise Cylinder included for Classroom function. Rim Cylinder included for Night Latch function. Schlage C keyway standard. Specify "IC" for IC Core Cylinders. Other keyways available by special order



Function	Classroom
ANSI	08
Item No.	ED81CTP10CL
Cylinder Type	Mortise 1/4"



Function	Night Latch
ANSI	03
Item No.	ED81CTP10NL
Cylinder Type	Rim



Function	Passage
ANSI	14
Item No.	ED81CTP10BE
Cylinder Type	None



Function	Dummy
ANSI	02
Item No.	ED81CTP10DM
Cylinder Type	None

EXIT ALARM KITS & CYLINDER DOGGING KIT

EXIT ALARM KIT- ED81ALM



INOX alarm kit for ED81 Series has an internal horn that will sound once the push bar has been depressed, signaling the door has been opened. The alarm is powered by a 9 volt battery, and will sound horn intermittently when the battery is low.


CYLINDER DOGGING EXIT DEVICE



INOX Cylinder dogging is available for non-rated devices and only available in full devices on the ED81 Series, not as a separate kit. Mortise Cylinder 1-1/4" included. Add "-CD" to Exit Device standard item code.

HOW TO ORDER

Stocked ED81 Exit Device

Product	Device	Type	Size	Finish	Option
ED81 1	F 2	-RIM 3	36 4	-32D 5	6
PRODUCT		TYPE		SIZE	
 ED81 Series		RIM	Rim Device (ANSI: Type 1)	36	36"
		SVR	Surface Vertical Rod (ANSI: Type 2)	48	48"
		CVR	Concealed Vertical Rod (ANSI: Type 7 & 8)	3684	36" x 84"
DEVICE					
Blank		Panic Exit			
F		Fire Exit			

5 FINISH

Standard:



32D



10B

6 OPTION

CD Cylinder Dogging (Non-Fire Device Only)

ALM Alarm Kit

POWER SUPPLY ELPS-8-ICO-10A

8 Fuse Relay, 10A, 115VAC



SPECIFICATION

Input Voltage	115 VAC, 60 Hz, 4.2A Eight access control trigger input
Output Voltage	24VDC 10A Supply Current Eight Auxiliary Power Outputs PTC protected output, rated @3.5A Filter and electronically output Short Circuit ACM8 board main fuse is rated at 10A
Battery Backup	Built-in charger for sealed lead acid or gel type batteries with automatic switch over to stand-by battery when AC fails.
Fire Alarm	Latching or non-latching selectable for any or all of the eight (8) outputs
LED Indicators	Input voltage and DC output
Product Weight	11.75 lbs
Dimensions	15.5" H x 12" W x 4.5" D 393.7mm x 304.8mm x 114.3mm
Electrical	32° to 120° F Maximum humidity 85%

STANDARD FINISHES

- AL Aluminum Painted
- For additional finish options not listed, contact Sales Department for MOQ and lead times*

APPLICATION AND FEATURES

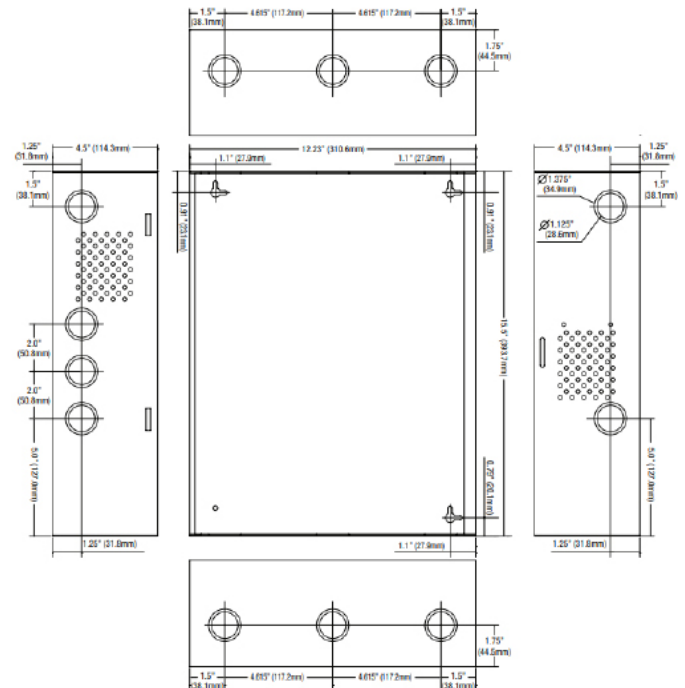
- This device converts a 115VAC 60Hz input into eight (8) independently controlled 24VDC Fail-Safe and/ or Fail-Secure outputs with a total of 10A continuous supply current.
- Outputs are activated by an open collector sink or normally open (NO) dry trigger input from an Access Control System.
- Intended for applications requiring UL 294 listing.
- The fire alarm disconnect feature is individually selectable for any or all of the eight (8) outputs.
- Automatic switch over to stand-by backup battery when AC fails.

CODE COMPLIANCE



UL294 Access Control Systems
CSFM Approved
MEA
NFPA 101 Life Safety

DIMENSIONS



POWER SUPPLY ELPS-8-ICO-6A

8 Fuse Relay, 6A, 115VAC



APPLICATION AND FEATURES

- This device converts a 115VAC 60Hz input into eight (8) independently controlled 12VDC or 24VDC Fail-Safe and/or Fail-Secure outputs with a total of 6A continuous supply current
- Intended for applications requiring UL 294 listing.
- Automatic switch over to stand-by backup battery when AC fails.

SPECIFICATION

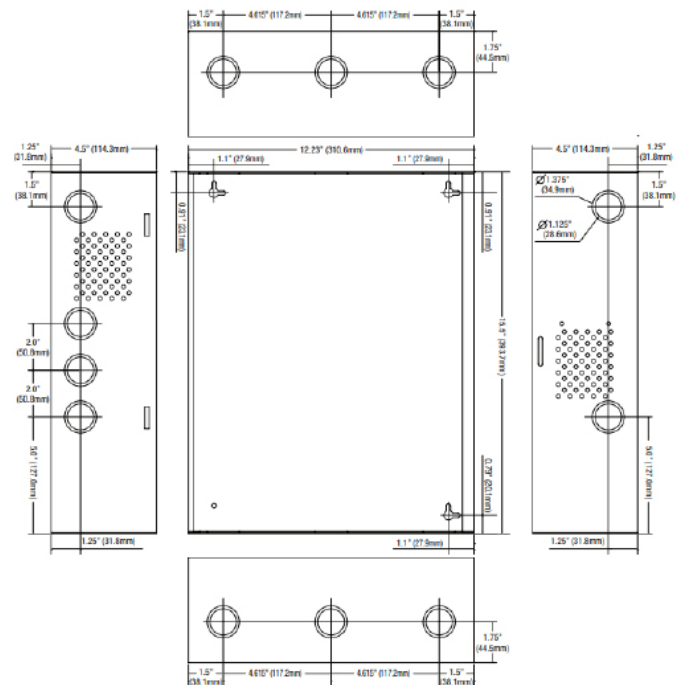
Input Voltage	115 VAC, 60 Hz, 3.5A Access control trigger input
Output Voltage	12 VDC or 24VDC 6A Supply Current Eight independently controlled outputs Eight Auxiliary Power Outputs PTC protected output, rated @3.5A Filter and electronically output Short Circuit ACM8 board main fuse is rated at 10A
Battery Backup	Built-in charger for sealed lead acid or gel type batteries with automatic switch over to stand-by battery when AC fails.
Fire Alarm	Latching or non-latching
LED Indicators	Input voltage and DC output
Product Weight	10.3 lbs
Dimensions	15.5" H x 12" W x 4.5" D 393.7mm x 304.8mm x 114.3mm
Electrical	32° to 120° F Maximum humidity 85%

CODE COMPLIANCE



UL294 Access Control Systems
CSFM Approved
MEA
NFPA 101 Life Safety

DIMENSIONS



STANDARD FINISHES

- AL Aluminum Painted
- For additional finish options not listed, contact Sales Department for MOQ and lead times

POWER SUPPLY ELPS-5-C2RPO

5 PTC, 2 Outputs, 5A, 115VAC



SPECIFICATION

Input Voltage	115VAC / 60Hz, 3.5A Access control trigger input
Output Voltage	12VDC or 24VDC 12VDC or 24VDC @ 4A Supply Current Five Class 2 Rated Power Limited Fail-Safe / Fail-Secure Outputs PTC protected output, rated @2.5A Overvoltage protection Filtered and regulated outputs
Battery Backup	Built-in charger for sealed lead acid or gel type batteries with automatic switch over to stand-by battery when AC fails.
Fire Alarm	Latching or non-latching
LED Indicators	Input voltage and DC output
Product Weight	7.6 lbs
Dimensions	13.5" H x 13" W x 3.25" D 342.9mm x 330.2mm x 82.55mm
Electrical	32° to 120° F Maximum humidity 85%

STANDARD FINISHES

- AL Aluminum Painted
- For additional finish options not listed, contact Sales Department for MOQ and lead times*

APPLICATION AND FEATURES

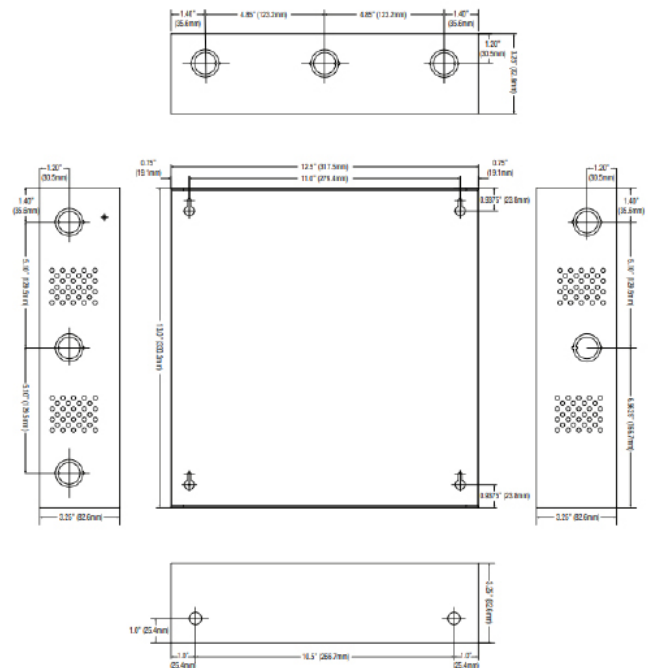
- This multi-output device allows access control power supply/charger is specifically designed for use with access control systems and accessories
- Switching Power Supply/Charger converts a 115VAC, 60Hz into two individually PTC protected auto-resettable 12VDC or 24VDC outputs.
- Intended for applications requiring UL 294 listing.
- Automatic switch over to stand-by backup battery when AC fails.

CODE COMPLIANCE



UL294 Access Control Systems
CSFM Approved
MEA
NFPA 101 Life Safety

DIMENSIONS



POWER SUPPLY ELPS-2-C2RPO

2 PTC, 2 Outputs, 1.75A, 115VAC



SPECIFICATION

Input Voltage	115 VAC, 60 Hz, 0.6A Access control trigger input
Output Voltage	12 VDC or 24VDC 1.75A Supply Current Two Class 2 Rated Power Limited Fail-Safe / Fail-Secure Outputs Auxiliary Power Output PTC protected output, rated @2.5A Filter and electronically output Short Circuit Thermal Overload Protection
Battery Backup	Built-in charger for sealed lead acid or gel type batteries with automatic switch over to stand-by battery when AC fails.
Fire Alarm	Latching or non-latching
LED Indicators	Input voltage and DC output
Product Weight	5.1 lbs
Dimensions	8.5" W x 7.5" H x 3.5" D 215.9mm x 190.5mm x88.9mm
Electrical	32° to 120° F Maximum humidity 85%

STANDARD FINISHES

- AL Aluminum Painted
- For additional finish options not listed, contact Sales Department for MOQ and lead times*

APPLICATION AND FEATURES

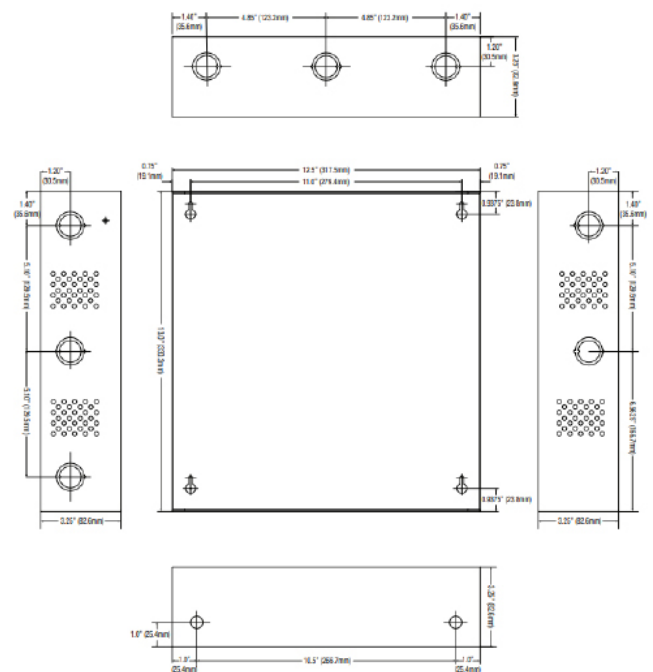
- Switching Power Supply/Charger converts a 115VAC, 60Hz into two individually PTC protected auto-resettable 12VDC or 24VDC outputs.
- Intended for applications requiring UL 294 listing.
- Automatic switch over to stand-by backup battery when AC fails.

CODE COMPLIANCE



UL294 Access Control Systems
CSFM Approved
MEA
NFPA 101 Life Safety

DIMENSIONS



CONCEALED DOOR LOOPS ELCDL



SPECIFICATION

Swing	Supports up to 180°
Product Weight	0.5 lbs

STANDARD FINISHES

- AB Aluminum Black
- For additional finish options not listed, contact Sales Department for MOQ and lead times*

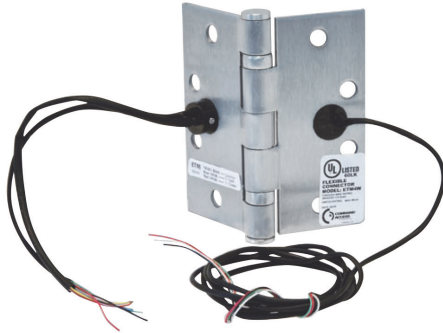
APPLICATION AND FEATURES

- The INOX Concealed Door Loop provides a cost-efficient method for transferring low-voltage electricity from the door frame to the locking device.
- The door loop remains completely concealed when the door is closed.
- Available for 3/4" offset pivot applications, continuous hinge applications, and butt hinge applications.
- The design allows for easy installation. Variable mounting locations provide versatile installation options.
- A special 1/4" flexible armored conduit enhances durability and flexibility.

ELCDL34
(For 3/4" offset pivot)



POWER TRANSFER HINGES ELPTH



SPECIFICATION

Accessories	Molex Connectors
Product Weight	1- 2 lbs

APPLICATION AND FEATURES

- INOX Power Transfer Hinges are designed to pass low-voltage power from the hinge jamb to the lockset without any exposed wiring.
- They are ideal for use with latch pullback devices, electric mortise locks, electric strikes (on a pair of doors), and cylindrical locksets.
- The hinges are ULF-listed for safety and compliance. They feature an easy installation process.
- A 4-foot lead is included at no additional charge. A non-conductive wire access cap ensures safe and efficient power transfer.
- The product comes with a 3-year warranty for added reliability.

STANDARD FINISHES

- AL Aluminum Black

For additional finish options not listed, contact Sales Department for MOQ and lead times

CONCEALED ELECTRIC POWER TRANSFER ELEPT



SPECIFICATION

Wiring	Two (2) 18 gauge Wires
Voltage	5 Amp @ 12/24 V AC/DC

STANDARD FINISHES

- AL Aluminum
- For additional finish options not listed, contact Sales Department for MOQ and lead times*

APPLICATION AND FEATURES

- Provides power control input for electric locks and exit devices, including locked, latched, mantrap, forced entry, and open status signal wiring.
- Designed for mortise door and frame installation. Includes fasteners for wood, steel, and aluminum doors and frames.
- Supports a maximum door opening of 180°.
- INOX Concealed Electric Power Transfer Devices securely transfer power for exit devices, locks, and signal wires from the frame to the door.
- Completely concealed when the door is closed, ensuring a clean and tamper-resistant installation. Ideal for high-traffic areas requiring enhanced security to prevent tampering and abuse.

SURFACE DOOR LOOP ELSDL



APPLICATION AND FEATURES

- INOX surface mounted door loops offers a safe method to transfer power when it is not possible to conceal a door loop.

SPECIFICATION

Model	DL-20
Function	Standard

STANDARD FINISHES

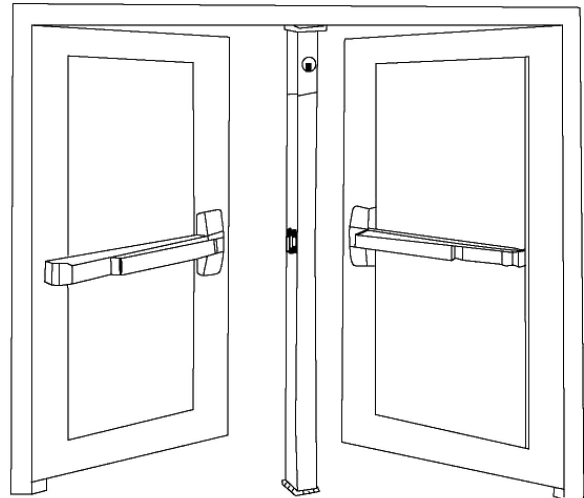
- AL Aluminum
- For additional finish options not listed, contact Sales Department for MOQ and lead times*

FIRE-RATED KEYED REMOVABLE MULLIONS

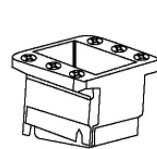
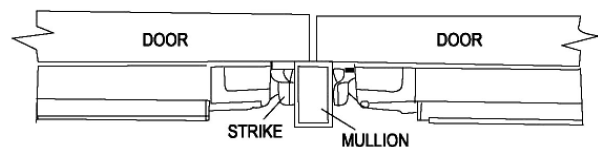
For use with Fire Rated Rim Exit Device on Fire Rated pairs of doors

SPECIFICATION

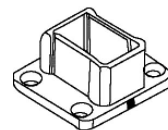
Mullion Tube	2" (51mm) wide x 3" (76mm) deep, with wall thickness of 1/8" (3mm), 11 gauge steel tube
Mullion Size	Three sizes mullion available: EDMUL96F: 7' (2134mm) EDMUL84F: 8' (2438mm) EDMUL120F: 10' (3048mm) May be cut to size in the field
Rim Cylinder	Use a 1-1/4" solid brass 6-pin rim cylinder, or interchangeable core, sold separately
Top Bracket	Stainless Steel, using key allows the mullion to be removed in seconds, mullion can be locked in top bracket easily without using the key
Bottom Bracket	Stainless Steel, fixed by 4 hex bolts with stainless steel anchors
Shims	1/2" (13mm) and 5/8" (16mm) shims included
Fasteners	Each mullion includes: 2 Flat Head Machine Screws, #5/16" - 18 x 1-1/2", Stainless Steel 4 Flat Head Machine Screws, #5/16" - 18 x 5/8", Stainless Steel 4 Flat Head Machine Screws, #5/16" - 18 x 1-1/4", Stainless Steel 4 Expansion Anchors, 5/8" dia. x 7/8" long, Steel
Strike	Use two (2) sets of Mullion Strikes EDLSR-688 & Strike Hooks EDLSR-689
Finish	Grey baked powder coating only



The removable Mullion is used with two Rim Devices on double doors.



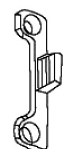
EDMBK52F



EDMBK55F



EDLSR688



EDLSR689

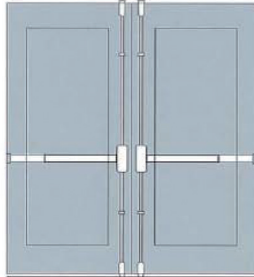
MOUNTING DIAGRAMS

Single Door



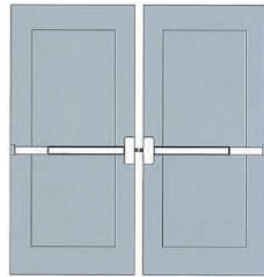
Vertical Rod type or Rim type
Surface applied 1 point lock.
Surface application.

Pair of Doors without Mullion



Vertical Rod type or Rim type
Surface applied 2 point locking on
each door.
Surface application.

Pair of Doors with Mullion



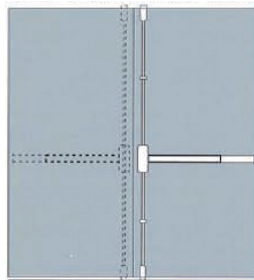
2 Rim type with Mullion
Two independent active doors with
full double door openings when
required. Same direction.

Pair of Doors without Mullion



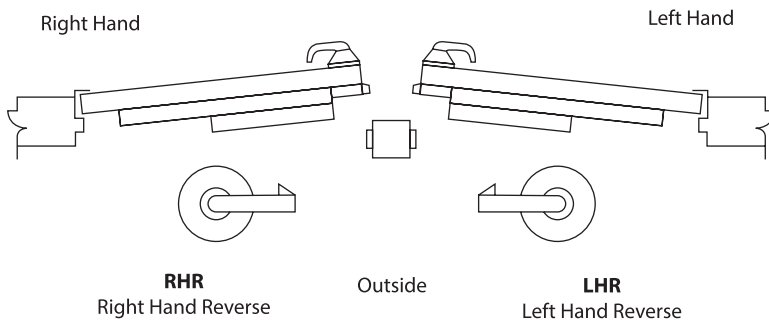
1 Vertical Rod and 1 Rim type
Both devices are surface applied.
A Coordinator and overlapping
strike is recommended.

Pair of Doors without Mullion



2 Vertical Rod type
Double egress surface applied.
2 point locking on each door
for opposite directions.

Handing



INOX ED93 Heavy Duty Commercial Exit Device CROSS REFERENCES

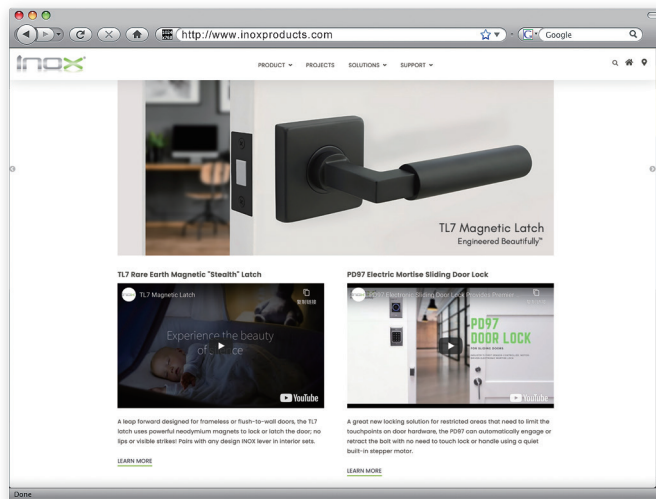
Device	INOX	Dorma	Von Duprin	Sargent	Hager	Falcon	Cal-Royal
RIM	ED93-RIM	9300	98/99	8800	4501R	25-R	7700
SVR	ED93-SVR	9400	9827/9927	8700	4501S	25-V	7760
Mortise	ED93-MED	9500	9875/9975	8900	-	25-M	MR7700
CVR	ED93-CVR	9100	9847/9947	8600	4501C	25-C	CVR7700

INOX ED70 Commercial Exit Device CROSS REFERENCES

Device	INOX	Dorma	Von Duprin	Sargent	Hager	Falcon	Cal-Royal
RIM	ED70-RIM	9300	98/99	8800	4501R	25-R	9800
SVR	ED70-SVR	9400	9827/9927	8700	4501S	25-V	9860
LBR	ED70-LBR	9400	9827/9927	NB-8700	4501LBR	25-V-LBR	LBR9860

INOX ED81 Narrow Stile Exit Device CROSS REFERENCES

Device	INOX	Dorma	Von Duprin	Sargent	Hager	Falcon	Cal-Royal
RIM	ED81-RIM	9300	98/99	8800	4501R	25-R	9800
SVR	ED81-SVR	9400	9827/9927	8700	4501S	25-V	9860
LBR	ED81-LBR	9400	9827/9927	NB-8700	4501LBR	25-V-LBR	LBR9860



Please visit our website
www.inoxproducts.com
for more technical and new product information.

Unison Hardware, Inc.
6 Wayne Court, Sacramento CA 95829, USA Tel: +1.916.388.1888
Email: info@unisonhardware.com