



Euro Profile Cylinder

CYEM / CYEU / CYFM SERIES



EN1303 SPECIFICATION

UNISON HARDWARE, INC.
www.inoxproducts.com

Version: 2015.10



TABLE OF CONTENTS

EN1303 Standard Explained	Page 1
How to Order	Page 3
Euro Cylinder CYFM Series	Page 4
Euro Cylinder CYEU Series	Page 6
Euro Cylinder CYEM Series	Page 8

Cylinder Locks

EN1303: 2005

SCOPE

The European standard to which this document relates applies to cylinders intended for use on locks in buildings. It identifies just one grade for category of use, three grades of durability, two grades of fire resistance, four grades of corrosion and temperature resistance, six grades of key related security based on design requirements, and three grades of attack resistance based on mechanical performance tests.

The suitability of cylinders for use on fire/smoke door assemblies is determined by fire performance tests conducted in addition to the mechanical performance testing required by the European standard. Suitability for use on fire resisting doors may not be essential in every situation.

On occasions there may be a need for additional functions within the design of the cylinder not covered by the European standard. In such cases purchasers should ensure that the products are suitable for their intended use. This is particularly important when the operation of such additional functions is safety related.

CLASSIFICATION

EN1303: 2005 classifies cylinders for locks using an 8 digit coding system. A broadly similar classification system is used for other building hardware product standards. Each digit refers to a particular feature of the product measured against the standard's performance requirements.

EN1303: 2005

Digit 1

Category of use

One category is identified:

Grade1: Keys shall resist a torque of 2.5Nm and still be usable.

Digit 2

Durability

Three grades are identified according to the number of test cycles achieved:

Grade 4: 25,000 cycles

Grade 5: 50,000 cycles

Grade 6: 100,000 cycles

Digit 3

Door mass

No requirement.

Digit 4

Fire resistance

Two grades are identified as follows:

Grade 0: Not suitable for fire/smoke resistant door assemblies.

Grade 1: Suitable for fire/smoke resistant door assemblies subject to satisfactory assessment of the contribution of the cylinder to the fire resistance of the specified fire/smoke door assemblies. Such assessment is beyond the scope of this European standard (see EN1634-1).

inox[®] CYFM / CYEU / CYEM Series Cylinders are tested to the following classification

1	6	0	1	0	C	5	2
---	---	---	---	---	---	---	---

inox[®] CYFM / CYEU / CYEM Series Cylinders

1	6	0	1	0	C	5	2
---	---	---	---	---	---	---	---

inox[®] CYFM / CYEU / CYEM Series Cylinders

1	6	0	1	0	C	5	2
---	---	---	---	---	---	---	---

inox[®] CYFM / CYEU / CYEM Series Cylinders

1	6	0	1	0	C	5	2
---	---	---	---	---	---	---	---

Successfully passed and exceeded 240-minutes fire test of metal fire door assemblies to EN1634-1:2014

Digit 5
Safety

No requirement.

Digit 6
Corrosion and temperature resistance

Four grades are identified as follows:

Grade 0: No corrosion or temperature resistance requirements.

Grade A: BS EN 1670 Grade 3 corrosion resistance (96 hours NSS):
no temperature resistance requirement.

Grade B: No corrosion resistance requirement:
resistance to -20/+80°C temperature extremes.

Grade C: BS EN 1670 Grade 3 corrosion resistance:
resistance to -20/+80°C temperature extremes

Note:

- No distinction is made between the inside and the outside of either the cylinder and/or the door.
- On completion of the test, the cylinder must operate using a maximum 1.5 Nm torque on the key.

Digit 7
Key related security

Six grades are identified and the principal requirements are summarised in Table 1 below:

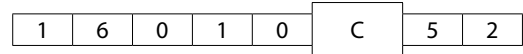
Table 1: Key related security	Grade					
	1	2	3	4	5	6
Minimum number of effective differs	100	300	15 000	30 000	30 000	100 000
Minimum number of movable levers, pins, discs, etc.	2	3	5	5	6	6
Coding on key could disclose combination	Yes	Yes	No	No	No	No
Torque resistance of plug	2.5Nm	5Nm	15Nm	15Nm	15Nm	15Nm

Digit 8
Attack resistance

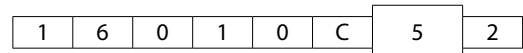
Three grades are identified and the principal requirements are summarised in Table 2 below:

Table 2: Attack resistance	Grade		
	0	1	2
Resistance to drilling (net drilling time)	-	3 mins	5 mins
Resistance to chisel attack (number of defined blows)	-	30	40
Resistance to twisting attack (number of defined twists)	-	20	30
Resistance to plug/cylinder extraction (pull load)	-	15 kN	15 kN
Torque resistance of plug/cylinder	-	20 Nm	30 Nm

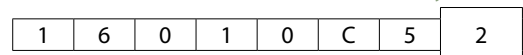
inox® CYFM / CYEU / CYEM Series Cylinders



inox® CYFM / CYEU / CYEM Series Cylinders



inox® CYFM / CYEU / CYEM Series Cylinders



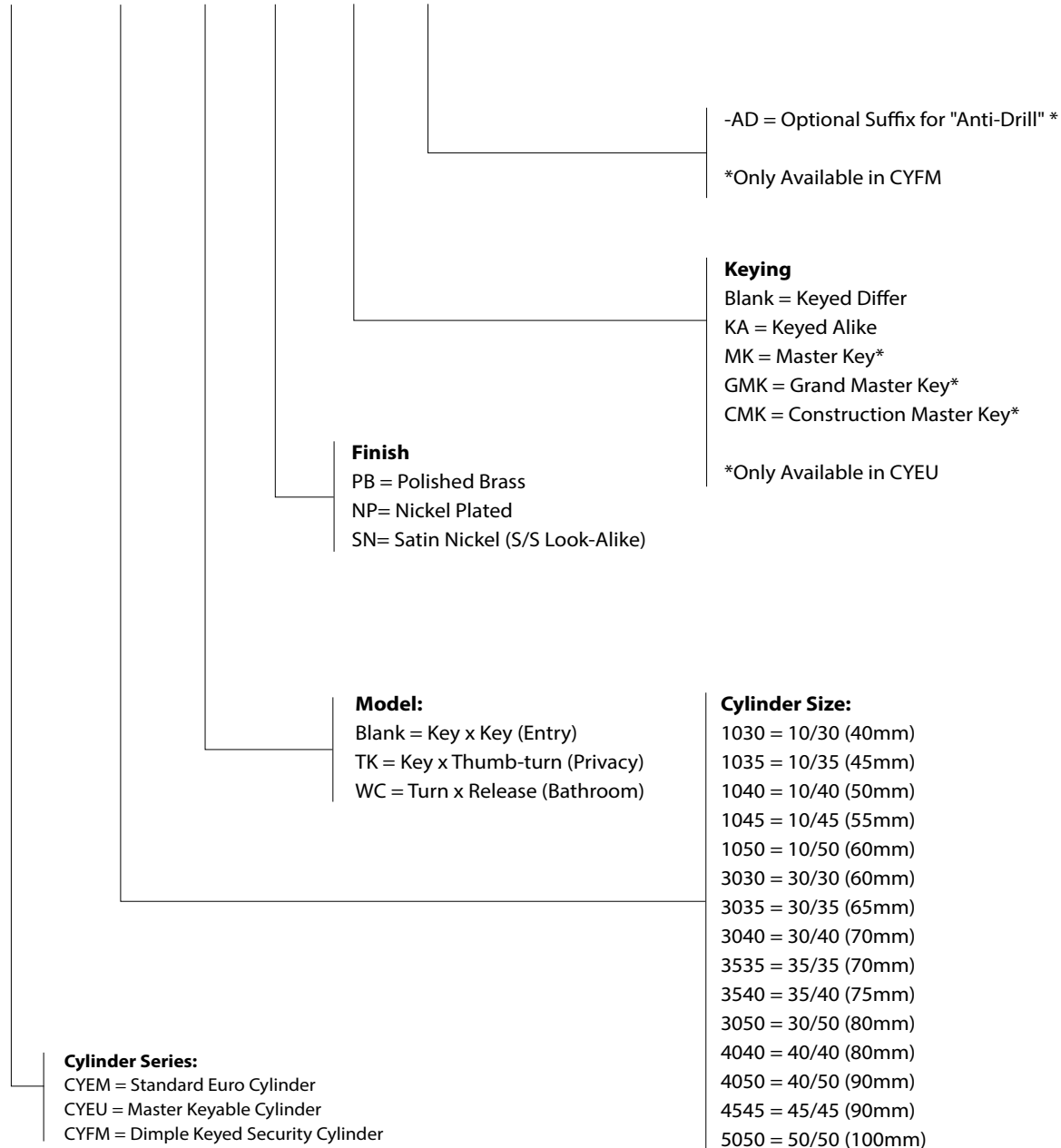
CE MARKING

EN1303 has not been designated as a harmonised product standard under the Construction Products Directive and therefore CE marking of cylinders to this standard is NOT permitted.

How to Order

Product Identification

CYEM -3030 TK -SN -KA -AD



Euro Cylinder CYFM Series

Application

INOX CYFM series cylinder is euro cylinder with dimpled pin system suitable for commercial or residential application to provide extra security

Specifications and Features

- Standard euro profile dimension according to DIN18252
- Solid brass body and keys
- Reversible key operation (double sided dimpled keys)
- Various lengths available for different door thickness
- Symmetrical and asymmetrical variant available to work with different lock installation position
- 6 pins construction to maximize key combination and security
- Anti-drill pins available upon request
- Enhanced attack resistance provided by INOX security escutcheons

Standards and Certification



Successfully type-tested for conformity to all of the requirements of EN1303:2005



Successfully passed 240-minutes fire test of metal door assemblies to EN1634-1:2014



All test performed independently and certified by Exova/Warringtonfire/Warrington APT. Test reports and/or certificates are available on request

EN1303:2005 Classification

1	6	0	1	0	C	5	2
---	---	---	---	---	---	---	---



Finishes

- Satin Nickel (SN)
- Nickel Plated (NP)
- Brass Polished (BP)
- * Other finish available on request

INOX Mortise Lock Options

- MB7200 Series
- MB8500 Series
- MD7200 Series
- MD8500 Series

INOX Security Escutcheons



EC-SE30



EC-SE35

EC-SE30: Security Escutcheon for Euro Cylinder
 EC-SE35: Security Escutcheon for Euro Cylinder with Cover Protection Rose

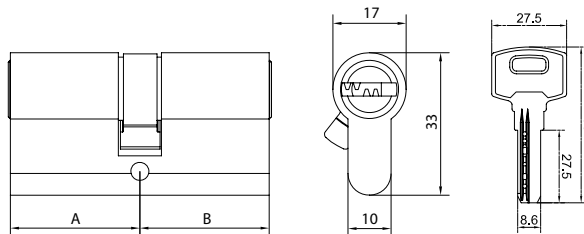
Euro Cylinder CYFM Series

Available Functions



Double Profile Cylinder

Application: Keyed operation from either side (inside or outside).



Item No

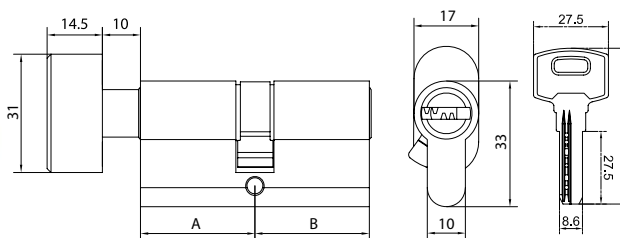
CYFM-3030
CYFM-3035
CYFM-3535
CYFM-4040

* Dimensions in mm



Double Profile Cylinder with Thumb-turn

Application: Keyed operation from one side (outside) and thumb-turn operated from the other side (inside).



Item No

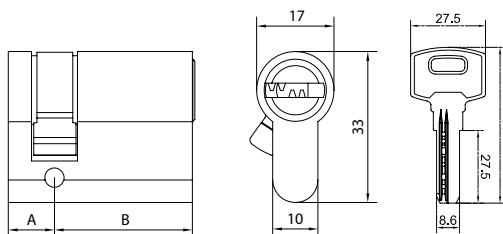
CYFM-3030TK
CYFM-3035TK
CYFM-3535TK
CYFM-4040TK

* Dimensions in mm



Single Profile Cylinder

Application: Keyed operation from one side (outside) only.



Item No

CYFM-1030
CYFM-1035
CYFM-1040
CYFM-1045

* Dimensions in mm

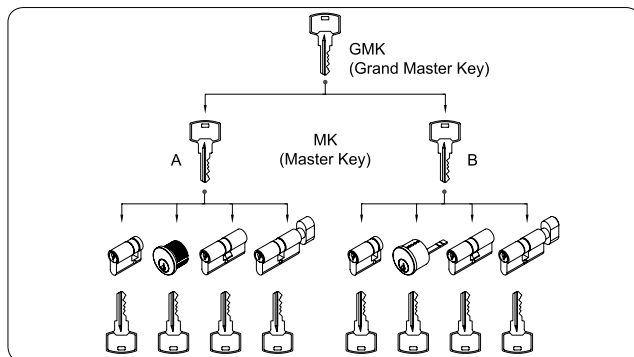
Euro Cylinder CYEU Series

Application

INOX CYEU series cylinder is manageable euro cylinder with keying ability suitable for commercial or residential application with specific access requirement

Specifications and Features

- Standard euro profile dimension according to DIN18252
- Solid brass body and keys
- Standard SC Keyway (Schlage C Keyway) for wide compatibility
- Various lengths available for different door thickness
- Symmetrical and asymmetrical variants available to work with different lock installation positions
- Master keying service available upon request
- Keying ability to suite with INOX ANSI Mortice Cylinder (CMB Series) and Rim Cylinder (CRB Series)
- Construction keying ability for use during the construction phase of a building. Can later be easily removed and replaced with permanent keys
- Enhanced attack resistance provided by INOX Security Escutcheons



Standards and Certification



Successfully type-tested for conformity to all of the requirements of EN1303:2005



Successfully passed 240-minutes fire test of metal door assemblies to EN1634-1:2014



All test performed independently and certified by Exova/Warringtonfire/Warrington APT. Test reports and/or certificates are available on request

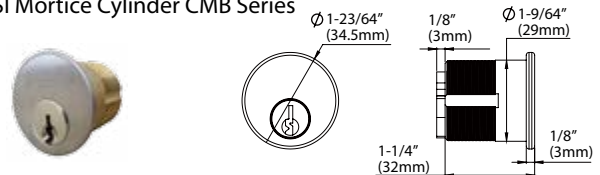
EN1303:2005 Classification

1	6	0	1	0	C	5	2
---	---	---	---	---	---	---	---

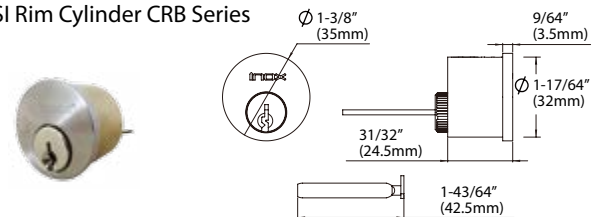


INOX Related Products

ANSI Mortice Cylinder CMB Series



ANSI Rim Cylinder CRB Series



Please refer to INOX ANSI catalogs for more information.

Finishes

- Satin Nickel (SN)
- Nickel Plated (NP)
- Brass Polished (BP)
- * Other finishes available on request

INOX Mortice Lock Options

- MB7200 Series
- MB8500 Series
- MD7200 Series
- MD8500 Series

INOX Security Escutcheons



EC-SE30



EC-SE35

EC-SE30: Security Escutcheon for Euro Cylinder
 EC-SE35: Security Escutcheon for Euro Cylinder with Cover Protection Rose

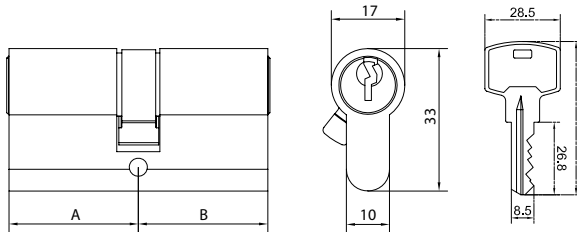
Euro Cylinder CYEU Series

Available Functions



Double Profile Cylinder

Application: Keyed operation from either side (inside or outside).



Item No

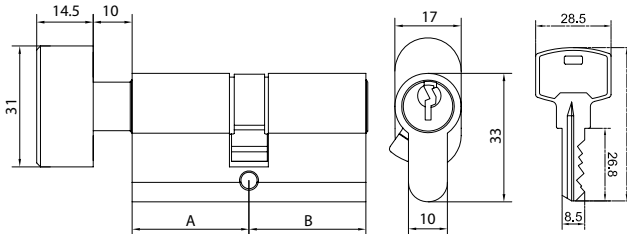
CYEU-3030
CYEU-3035
CYEU-3535
CYEU-4040

* Dimensions in mm



Double Profile Cylinder with Thumb-turn

Application: Keyed operation from one side (outside) and thumb-turn operated from the other side (inside).



Item No

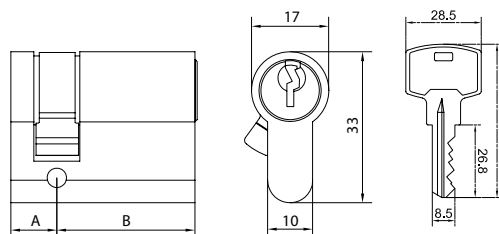
CYEU-3030TK
CYEU-3035TK
CYEU-3535TK
CYEU-4040TK

* Dimensions in mm



Single Profile Cylinder

Application: Keyed operation from one side (outside) only.



Item No

CYEU-1030
CYEU-1035
CYEU-1040
CYEU-1045

* Dimensions in mm

Euro Cylinder CYEM Series

Application

INOX CYEM series cylinder is standard euro cylinder designed for INOX or any euro cylinder fitted mortice lock to provide necessary security for commercial or residential applications

Specifications and Features

- Standard euro profile dimension according to DIN18252
- Solid brass body and keys
- Various lengths available for different door thickness
- Symmetrical and asymmetrical variants available to work with different lock installation positions
- Advanced key differ combination security with 5 pin design
- 3 keys per cylinder as standard
- Enhanced attack resistance provided by INOX Security Escutcheons



Finishes

- Satin Nickel (SN)
- Nickel Plated (NP)
- Brass Polished (BP)
- * Other finish available on request

Standards and Certification



Successfully type-tested for conformity to all of the requirements of EN1303:2005



Successfully passed 240-minutes fire test of metal door assemblies to EN1634-1:2014



All test performed independently and certified by Exova/Warringtonfire/Warrington APT. Test reports and/or certificates are available on request

EN1303:2005 Classification

1	6	0	1	0	C	5	2
---	---	---	---	---	---	---	---

INOX Mortice Lock Options

- MB7200 Series
- MB8500 Series
- MD7200 Series
- MD8500 Series

INOX Security Escutcheons



EC-SE30



EC-SE35

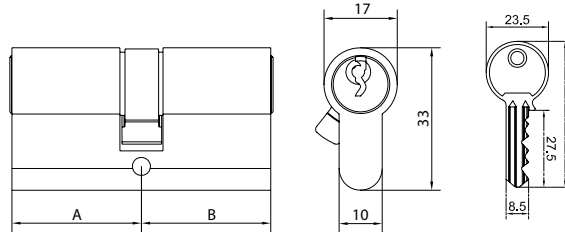
EC-SE30: Security Escutcheon for Euro Cylinder
 EC-SE35: Security Escutcheon for Euro Cylinder with Cover Protection Rose

Euro Cylinder CYEM Series

Available Functions

Double Profile Cylinder

Application: Keyed operation from either side (inside or outside).



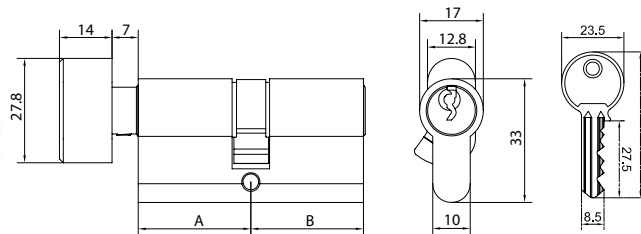
Item No

CYEM-3030
CYEM-3035
CYEM-3535
CYEM-4040

* Dimensions in mm

Double Profile Cylinder with Thumb-turn

Application: Keyed operation from one side (outside) and thumb-turn operated from the other side (inside).



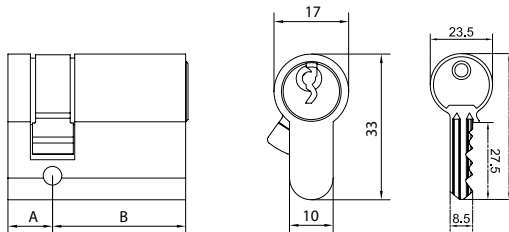
Item No

CYEM-3030TK
CYEM-3035TK
CYEM-3535TK
CYEM-4040TK

* Dimensions in mm

Single Profile Cylinder

Application: Keyed operation from one side (outside) only.



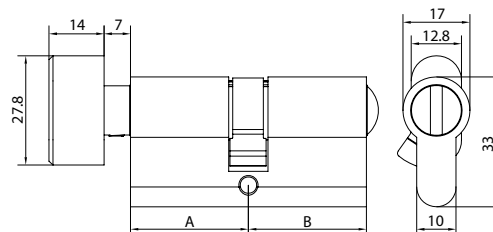
Item No

CYEM-1030
CYEM-1035
CYEM-1040
CYEM-1045

* Dimensions in mm

Privacy/Bathroom Cylinder

Application: Thumb-turn operated from inside and emergency release slot operated from outside



Item No

CYEM-3030WC
CYEM-3035WC
CYEM-3535WC
CYEM-4040WC

* Dimensions in mm



Please visit our website
<http://www.inoxproducts.com>
for more technical and new product information.



Unison Hardware, Inc.
6 Wayne Court, Sacramento, CA 95829, USA
Tel: +1.916.388.1888 Fax: +1.916.388.8322
Email: info@unisonhardware.com
<http://www.inoxproducts.com>