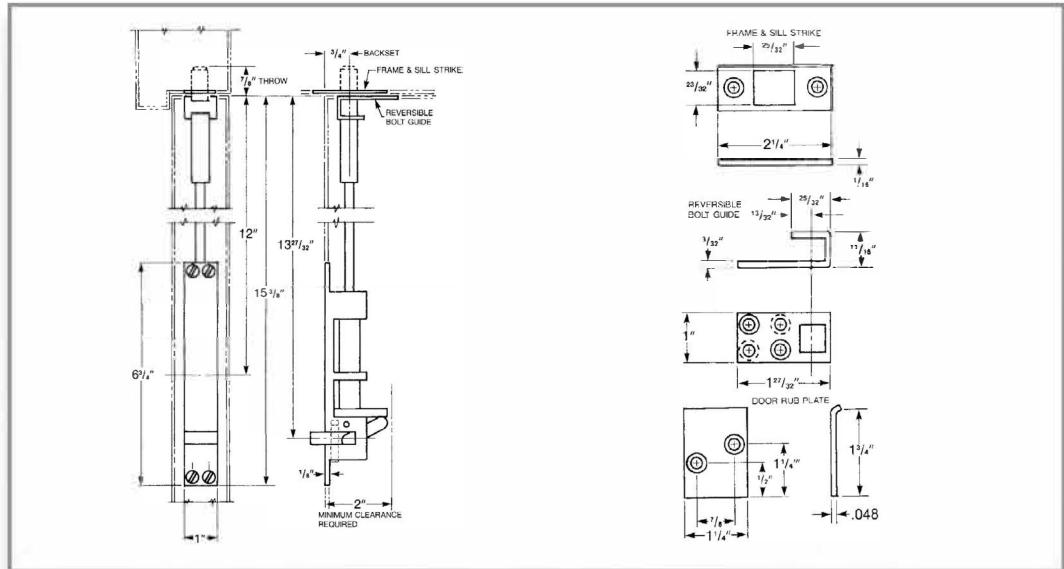


## Automatic Flushbolts for Metal Doors

FBA292M



**FBA292M**



### Features

- FBA292M: Fully Automatic, Non-Handed
- Automatic 3/4" throw with 1" Vertical Adjustment
- 12" Rod to Fit Standard ANSI Preparation
- Spring Override in Case of Misalignment
- Steel Body and Stainless Steel Components
- Spring Loaded Lever to Project or Retract Bolt
- Bolt Housing Screws #8 x 32 x 3/4" MS
- Strike Screws #8 x 1" SM
- Bolt Guide Screws #8 x 32 x 3/4" MS
- Bolt Guide Screws #8 x 1" SM
- Bolt Guide Screws #8 x 32 x 3/4" MS
- Bolt Guide Screws #8 x 1" SM
- Listed up to 3 hours on Hollow Metal and Steel-Covered Composite Doors up to 8 feet

### Finishes

- Stocking: US26D (626) Satin Chrome  
 Special Order:
- US3 (605) Bright Brass
  - US4 (606) Satin Brass
  - US10B (613) Oil Rubbed Bronze
  - US26 (625) Bright Chrome

### Warranty

3 Year Warranty

### Specifications

Automatic Flushbolts for metal doors shall be INOX<sup>®</sup> model number FBA292M and body shall be made of steel and stainless steel components. Flush bolts shall be automatically retracting when active door is opened and project into the frame header or floor when the door is closed. Bolts shall project 3/4" from the top or bottom edge of door with 1" adjustment.

### Code Compliance



- ANSI - A156.3 Type 25
- ANSIA117.1 and ADA for barrier-free accessibility
- C-UBC-California Amended Uniform Builders Code
- NFPA80 - National Fire Protection Association
- NFPA101 - National Fire Protection -Life Safety