

# ANSI/BHMA GRADE 1 Door Closers



**DC90 Extra Heavy Duty**

**DC85 Heavy Duty**

**DC61 Standard Duty**

# CONTENTS

---



## DC90 Series

- Page 01** Specifications
- Page 02** Features and Functions
- Page 04** Cutaway View and Exploded Diagram
- Page 05** Mounting Diagrams
- Page 06** Arms
- Page 07** Drop Plates, Covers, Bracket and Fixing Packs
- Page 08** How to Order



## DC85 Series

- Page 09** Specifications
- Page 10** Features and Functions
- Page 12** Cutaway View and Exploded Diagram
- Page 13** Mounting Diagrams
- Page 14** Arms and Drop Plates
- Page 15** Covers, Bracket and Fixing Packs
- Page 16** How to Order



## DC61 Series

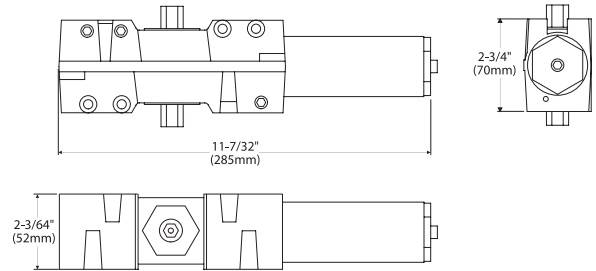
- Page 17** Specifications
- Page 18** Features and Covers
- Page 19** Cutaway View and Exploded Diagram
- Page 20** Mounting Diagrams
- Page 21** How to Order
- Page 22** Cross References

Disclaimer: All information in this catalog has been deemed accurate as of the date of printing. We are continuously improving and expanding our line in an effort to offer our clients the finest quality products and services; therefore, Unison Hardware, Inc., reserves the right to alter this information or correct printing errors at any time.

© 2025 Unison Hardware, Inc. All Rights Reserved. V20250214

# EXTRA HEAVY DUTY DOOR CLOSER DC9016

## ANSI/BHMA Grade 1



### SPECIFICATIONS

<b>Adjustable Power Size</b>	1 Thru 6 meets ADA Barrier-Free requirements
<b>Body</b>	Cast Iron body
<b>Design</b>	Rack-and-Pinion
<b>Valves</b>	Separate and independent latch, sweep, and back-check pressure valves
<b>Handing</b>	Non-Handed
<b>Cover</b>	Plastic full cover standard
<b>Piston</b>	Tri-packed 38mm (1-1/2") diameter
<b>Pinion Shaft</b>	45/64" (18mm) diameter
<b>Projection</b>	2-9/32" (58mm), with full cover

### CODE COMPLIANCE



ANSI/BHMA A156.4 Grade 1 Closer  
 ANSI A117.1 ADA Accessibility  
 UL Listed for ANSI/UL10B and UL10C,  
 CAN/ULC S104 up to 3 Hours  
 UL 228 UBC Standard 7-2 (1997) NFPA 252  
 NFPA 80 National Fire Protection - Fire Door Assembly  
 NFPA101 National Fire Protection - Life Safety  
 ANSI/BHMA A156.18 Finishes

### STANDARD FINISHES

- AL Aluminum Painted
- DU Duro/Dark Bronze Painted
- 19G Graphite Black

*For additional finish options not listed, contact Sales Department for MOQ and lead times*

## FEATURES

### Cast Iron Body

Closer bodies are constructed of high grade cast iron designed for high traffic conditions

### Rack & Pinion Operation

Provides a smooth constant control of the door through its full opening and closing cycle. 180° door swing can be achieved when door, frame, and/or arm do not interfere

### Non-Handed

DC9016 door closer is non-handed and can be installed on either right or left hand swing doors

### Sweep Speed Control Valve

Allows adjustment of door speed from the door's full open position down to approximately 10° from the closed position

### Latch Speed Control Valve

Allows adjustment of door latch speed from approximately 10° down to the door's fully closed position

### Tri-Packed

DC90 Series closers are packed with self-tapping (SRT), sex nuts & bolts (SNB) and a parallel arm (PA) bracket to allow for regular, top jamb, and parallel arm installations

### Adjustable Back-Check Valve

Provides control of the door in the opening cycle, beginning at approximately 75° of door opening. It cushions the door opening when the door is forcibly opened beyond its preadjusted setting

### Standard Molded Cover

Molded from high impact material  
Covers are non-handed for all applications

### Multi-Sized Door Closer

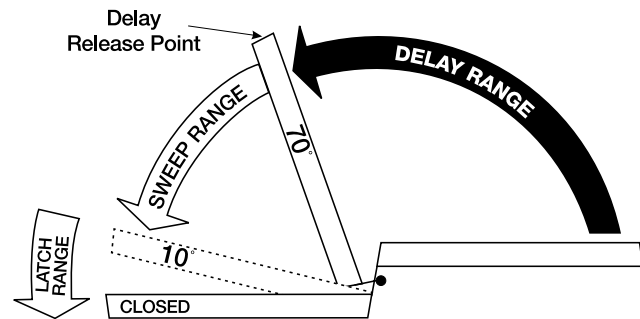
Ships as size 3 but easily adjustable through power range from 1 through 6. DC9016 Door Closer also conforms to the opening force requirements of the ADA and ANSI/BHMA standard A117.1 for interior doors

## OPTIONAL FUNCTIONS

### Delayed Action Closing

An optional hydraulic adjustable feature adds a third speed (DA) range to the closing cycle. This feature becomes effective when the door is opened and released at any point beyond 70°. The amount of time delay depends upon the angle of door release and valve adjustment. The valve can be adjusted with 4mm hex key (provided) from no delay time up to maximum delay times of:

Door opened	Approximate Time of Delay Cycle
180°	4~5 minutes
120°	2~3 minutes
90°	25~30 seconds



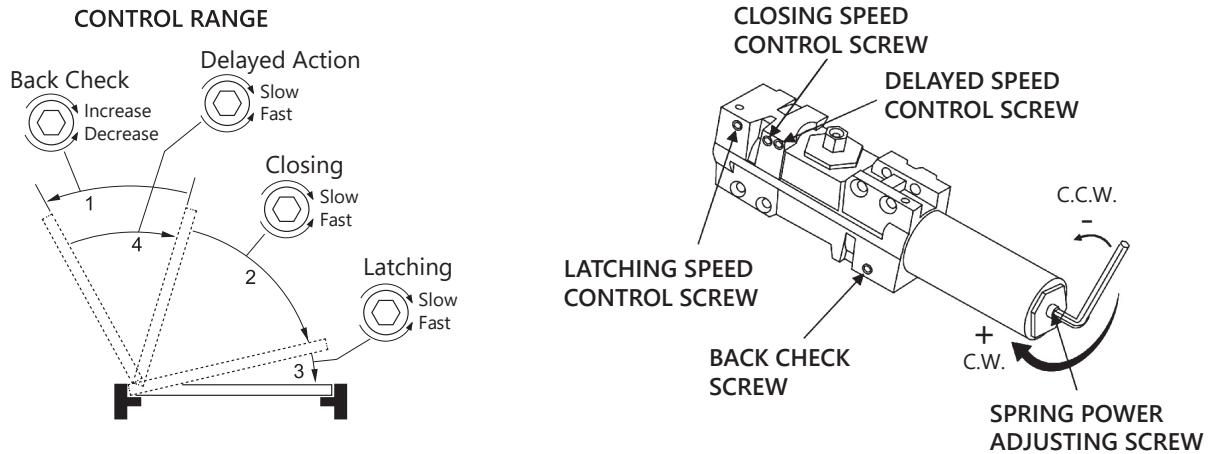
### Suggested Applications

Delayed Action closing allows slow-moving traffic to clear the opening before the door closer's "normal" closing cycle begins. Healthcare, Hospitals and Nursing Home facilities all use this feature because it allows sufficient time for persons in beds, wheelchairs or on crutches to pass through an opening without concern of the door closing on them. Delayed Action Closers can also accommodate openings for food service carts, hand trucks, and pallet jacks

### Pressure Relief Safety Valve

The (DA) hydraulic system contains a pressure relief valve. Any time the door is forced toward the closed direction while it is in the closing cycle, the valve will open and allow the door to close. This prevents damage to closer, arm, frame and door

APPLICATION CHART



Door Closer Size	Full Turns of Power-adjusting Screw*	Maximum Door Width		Applicable Door Weight
		Exterior (Swing out)	Interior	
1	-7	28" (0.71m)	32" (0.81m)	33~66 lbs (15~30kg)
2	-4	32" (0.81m)	36" (0.91m)	66~99 lbs (30~45kg)
3	0 (Preset)	36" (0.91m)	42" (1.07m)	99~143 lb (45~55kg)
4	+5	42" (1.07m)	48" (1.22m)	143~187 lbs (65~85kg)
5	+10	48" (1.22m)	54" (1.37m)	187~264 lbs (85~120kg)
6	+15	54"(1.37m)	58" (1.47m)	264~330 lbs (120~150kg)

**CLOCKWISE FOR POSITIVE NUMBERS (+)**



**COUNTER-CLOCKWISE FOR NEGATIVE NUMBERS (-)**

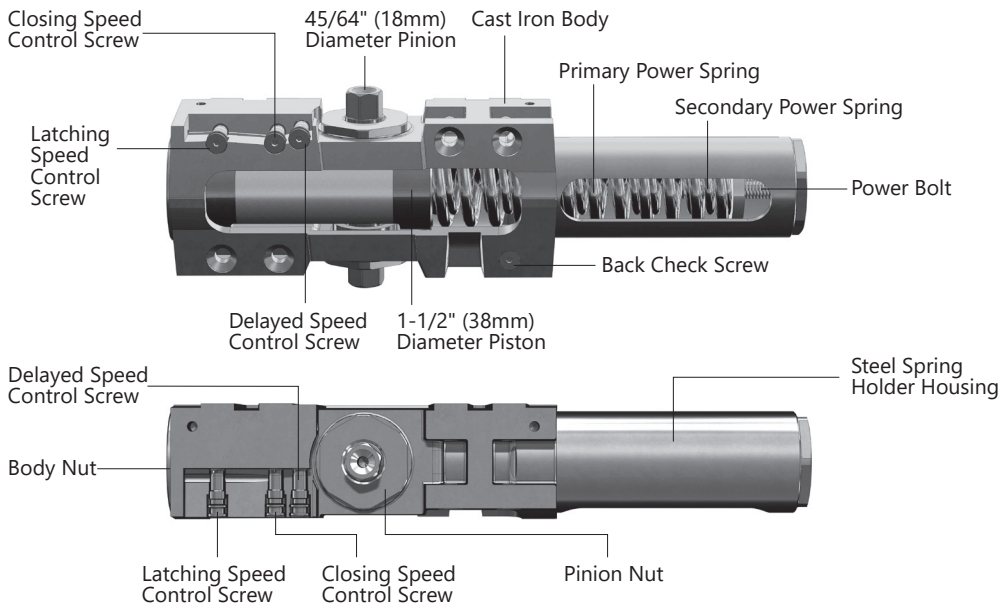


The closing force for DC9016 series door closers is adjustable from size 1 to size 6, as outlined in ANSI Standard A156.4. When these series of door closers are installed and adjusted to confirm to ADA reduced opening force requirements (5 lbs max.) for interior doors, they may not have adequate closing force to reliably close and latch door. Power adjustments charted on this page are recommended where possible to ensure proper door control

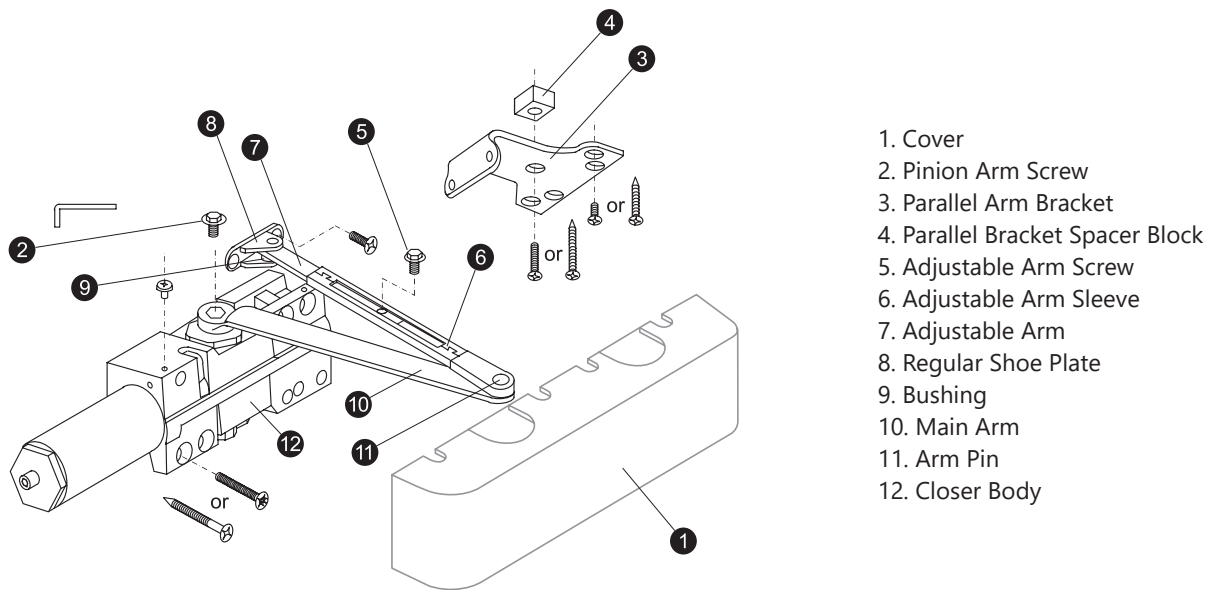
**CAUTION!!**

Turns required are approximate because of various door conditions and locations. You may have to further adjust spring tension to suit your requirements

CUTAWAY VIEW



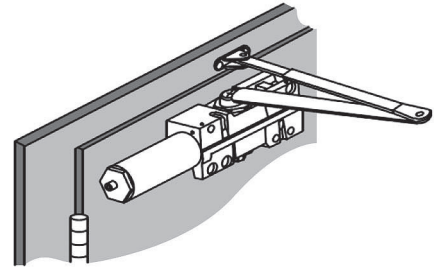
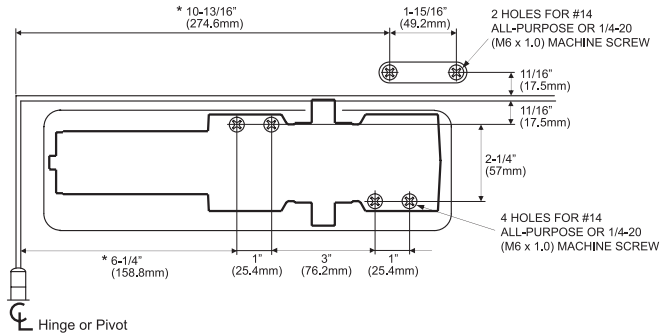
EXPLODED DIAGRAM



MOUNTING DIAGRAMS

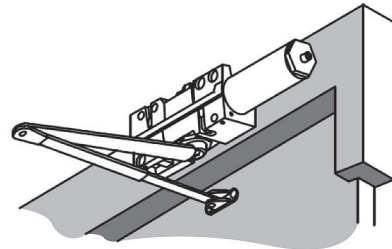
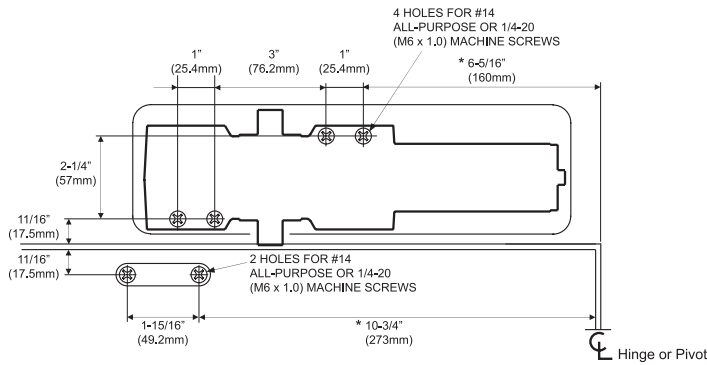
**Regular Mounting (Pull Side)**

Regular arm is the most common and strongest mounting option. Usually the closer is mounted on the door and the arm is mounted on the frame



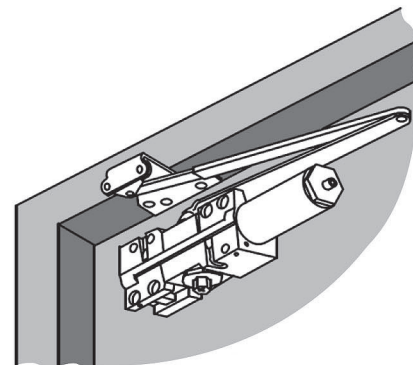
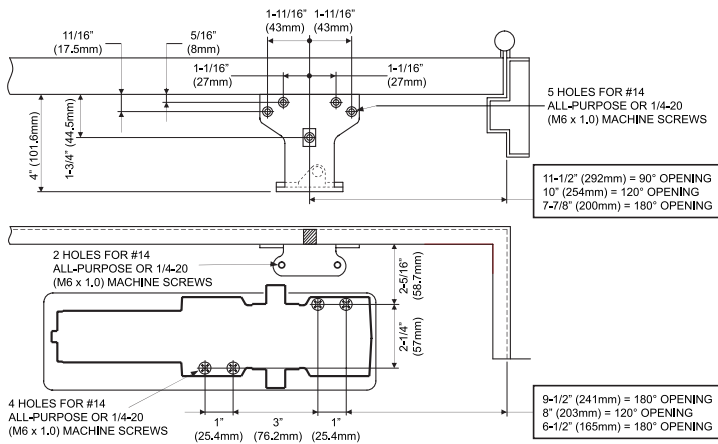
**Top Jamb Mounting (Push Side)**

Closer body is mounted to the frame with the arm straight out. Ideal for exterior door installations. You must consider frame depth reveal. Extended arm may be required



**Parallel Arm Mounting (Push Side)**

Closer body on door with parallel bracket on stop of frame. Arm is parallel to the door and does not stick out. Parallel arm installations have 25% less power than regular pull side mounting





STANDARD ARMS

Regular / Parallel Arm with bracket

Regular non-handed arm with adjustable slider can be used for a wide range of frame conditions and can be mounted to hinge (pull) side, top jamb

For parallel arm, use parallel arm bracket to mount on stop of frame on other (push) side of the door. Frame should be reinforced for parallel arm bracket

OPTIONAL ARMS

DC9016HO  
Hold Open Arm



Non-handed arm with adjustable round slide arm for a wide range of frame conditions. Open to desired range, then tighten screw and lock nut: the door will hold in that position every time until changed. For parallel mount use parallel arm bracket

DC9016HCUSH  
Hold Open Cush Arm



Non-handed heavy duty forged arm with cush stop and hold open parallel arm mount. Handle controls the hold open function. Must use frame reinforcement in stop to mount

DC9016EDA  
Extra Heavy Duty Arm



Non-handed parallel arm features forged, solid steel main arm and forearm for high traffic installation

DC9016CUSH  
Cush Arm



Non-handed heavy duty forged arm with cush stop, parallel arm mount. Must use frame reinforcement in stop to mount

DC9016ST  
Sliding Track

Single lever (track) arm with a surface mounted closer designed for interior use on narrow head frames and top rails. Offers three mounting positions: Pull Side, Push Side, and Top Jamb

DC9016STH  
Sliding Track Hold Open Arm



The Hold-Open options allows for hold-open points at 85°, 90°, 95°, 100°, 105° or 110° depending on clip location in track



OPTIONAL DROP PLATES – NARROW TOP RAIL

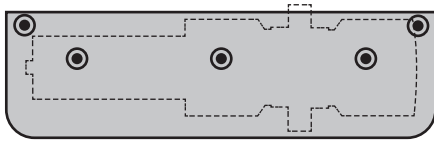
For use on doors with glass where the drop plates cover the back of the closer

Also used when top rail is narrow and prevents the closer from being mounted to a surface of wood or metal

Correct installation will permit 180° maximum opening. Please see Drop Plate Installation Guide for detailed instructions.

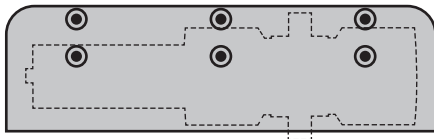
**DCDP90P1:**

Drop Plate for DC9016 Series Door Closer, Pull Side Mount



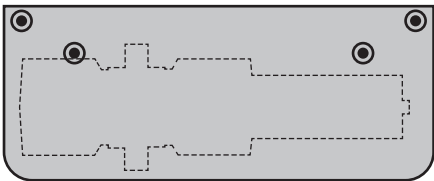
**DCDP90P2:**

Drop Plate for DC9016 Series Door Closer, Top Jamb Mount, Flush Ceiling



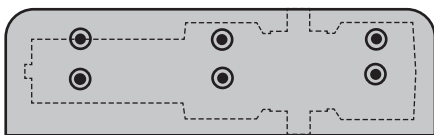
**DCDP90P3:**

Drop Plate for DC9016 Series Door Closer, Parallel Arm Mount



**DCDP90P4:**

Drop Plate for DC9016 Series Door Closer, Top Jamb Mount



COVER OPTIONS

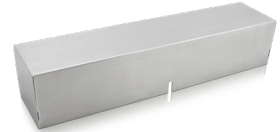
**DCCV90F**

Plastic Full Cover



**DCCV90FSS**

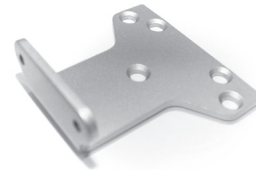
Stainless Steel Cover



PARALLEL ARM BRACKET

**DCBK90**

Parallel Arm Bracket



FIXING PACKS

**DCFP90**

Standard self-tapping screws (SRT) for Closer body and parallel arm bracket




**DCFPSNB**

Standard sex nuts and bolts (SNB) fixing pack



## HOW TO ORDER

### Stocked DC90 Door Closer

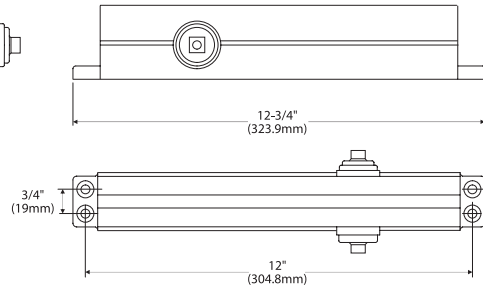
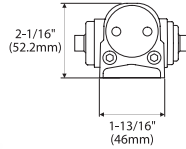
Product	Power Size	Function	Finish
<b>DC90</b> 1	<b>16</b> 2	<b>DA</b> 3	<b>AL</b> 4
<b>PRODUCT</b>	<b>POWER SIZE</b>		<b>FUNCTION</b>
 DC90 Series	1-6		Blank Door Closer with Sleeve Arm, Plastic Full Cover (Standard) DA Door Closer with Delayed Action HO Door Closer with Friction Hold Open CUSH Door Closer with Cush Arm HCUSH Door Closer with Hold Open Cush Arm EDA Door Closer with Extra Duty Arm HEDA Door Closer with Hold Open Extra Duty Arm ST Door Closer with Slide Track Arm* STH Door Closer with Slide Track Hold Open Arm*
<b>4 FINISH</b>	*Slide track arm is only available for AL finish		
AL	28 Aluminum Painted		
DU	20 Duro/Dark Bronze Painted		
19G	Graphite Black		

### ACCESSORY PRODUCT IDENTIFICATION

Item No.	Description
<b>DCCV90F</b>	Plastic Full Cover for DC90 Series Door Closer
<b>DCCV90FSS</b>	Stainless Steel Cover for DC90 Series Door Closer
<b>DCAM90HO</b>	Friction Hold Open Arm for DC90 Series Door Closer
<b>DCAM90CUSH</b>	Cush Arm for DC90 Series Door Closer
<b>DCAM90HCUSH</b>	Hold Open Cush Arm for DC90 Series Door Closer
<b>DCAM90EDA</b>	Extra Heavy Duty Arm for DC90 Series Door Closer
<b>DCAM90HEDA</b>	Hold Open Extra Duty Arm for DC90 Series Door Closer
<b>DCAM90ST</b>	Slide Track Arm for DC90 Series Door Closer
<b>DCAM90STH</b>	Slide Track Hold Open Arm for DC90 Series Door Closer
<b>DCDP90P1</b>	Drop Plate for DC90 Series Door Closer, Pull Side Mount
<b>DCDP90P2</b>	Drop Plate for DC90 Series Door Closer, Top Jamb Mount, Flush Ceiling
<b>DCDP90P3</b>	Drop Plate for DC90 Series Door Closer, Parallel Arm Mount
<b>DCDP90P4</b>	Drop Plate for DC90 Series Door Closer, Top Jamb Mount

# HEAVY DUTY DOOR CLOSER DC8516

## ANSI/BHMA Grade 1



### SPECIFICATIONS

<b>Adjustable Power Size</b>	1 Thru 6 meets ADA Barrier-Free requirements
<b>Body</b>	One piece Aluminum Alloy Body
<b>Design</b>	Rack-and-Pinion
<b>Valves</b>	Separate and independent latch, sweep, and back-check pressure valves
<b>Handing</b>	Non-Handed
<b>Cover</b>	Plastic full cover standard
<b>Packing</b>	Tri-packed
<b>Fixing Packs</b>	SRT fasteners furnished standard
<b>Pinion</b>	32mm (1-17/64") diameter
<b>Pinion Shaft</b>	16mm (5/8") diameter
<b>Projection</b>	53mm (2-3/32"), w/o cover

### CODE COMPLIANCE



ANSI/BHMA A156.4 Grade 1 Closers  
 ANSI A117.1 ADA Accessibility  
 UL Listed for ANSI/UL10B and UL10C,  
 CAN/ULC S104 up to 3 Hours  
 UL 228 UBC Standard 7-2 (1997) NFPA 252  
 NFPA 80 National Fire Protection - Fire Door Assembly  
 NFPA101 National Fire Protection - Life Safety  
 ANSI/BHMA A156.18 Finishes

### STANDARD FINISHES

- AL Aluminum Painted
- DU Duro/Dark Bronze Painted
- 19G Graphite Black

*For additional finish options not listed, contact Sales Department for MOQ and lead times*

**FEATURES**

**Aluminum Alloy Body**

Closer bodies are cast of special aluminum alloy and machined to accommodate interactive steel components under operating conditions

**Rack & Pinion Operation**

Provides a smooth constant control of the door through its full opening and closing cycle. 180° door swing, closer on hinge side, can be achieved when door, frame, and arm do not interfere

**Non-Handed**

DC8516 Door Closer is non-handed and can be installed on either right or left hand swing doors

**Sweep Speed Control Valve**

Allows adjustment of door speed from the door's 90° open position down to approximately 10° from the closed position

**Latch Speed Control Valve**

Allows adjustment of door latch speed from approximately 10° down to the door's fully closed position

**Tri-Packed**

DC85 Series come with self-tapping (SRT), sex nuts & bolts (SNB) and parallel arm (PA) bracket to allow for regular, top jamb, and parallel arm installations

**Adjustable Back-Check Valve**

Provides control of the door in the opening cycle, beginning at approximately 75° of door opening. The valve cushions the door opening when the door is forcibly opened beyond its preadjusted setting

**Standard Molded Cover**

Molded from high impact material  
Covers are non-handed for all applications

**Multi-Sized Door Closer**

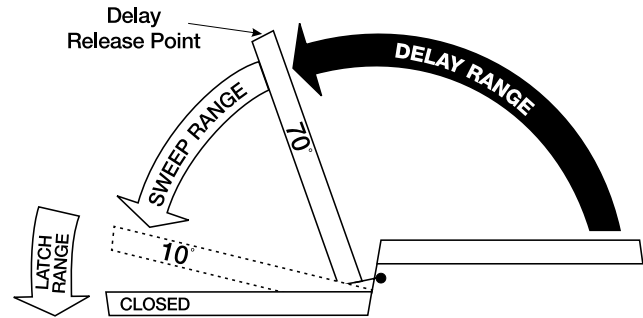
Shipped as size 3, but easily adjustable through the power range of 1 through 6. DC8516 Door Closer also conforms to the opening force requirements of the ADA as well as the ANSI/BHMA standard A117.1 for interior doors

**OPTIONAL FUNCTIONS**

**Delayed Action Closing**

An optional hydraulic adjustable feature adds a third speed (DA) range to the closing cycle. This feature becomes effective when the door is opened and released at any point beyond 70°. The amount of time delay depends upon the angle of door release and valve adjustment. The valve can be adjusted with 4mm hex key (provided) from no delay time up to maximum delay times of:

Door opened	Approximate Time of Delay Cycle
180°	4~5 minutes
120°	2~3 minutes
90°	25~30 seconds



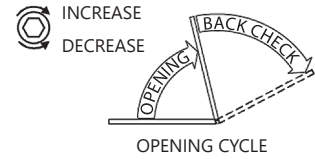
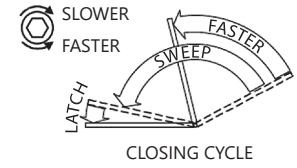
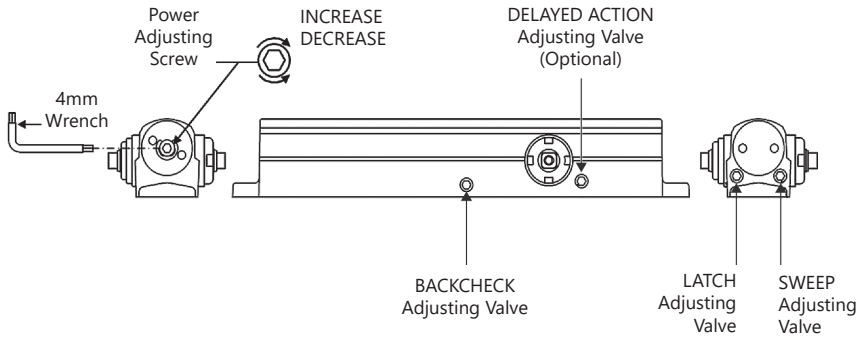
**Suggested Applications**

Delayed Action Closing allows slow-moving traffic to clear the opening before the door closer's "normal" closing cycle begins. Healthcare, Hospitals and Nursing Homes facilities all use this feature. It gives sufficient time for persons in beds, wheelchairs or on crutches to pass through an opening without concern of the door closing on them. Delayed Action closers can also accommodate openings with movement of food service carts, hand trucks, and pallet jacks

**Pressure Relief Safety Valve**

The (DA) hydraulic system contains a pressure relief valve. Any time the door is forced toward the closed direction while it is in the closing cycle, the valve will open and allow the door to close. This prevents damage to Closer, Arm, Frame and Door

APPLICATION CHART



Door Closer Size	Full turns of power adjusting screw*	Applicable Door Leaf Width		Applicable Door Weight
	8516 8516DA	Exterior (Swing out)	Interior	
1	-6	28" (0.71m)	32" (0.81m)	33~66LBS (15~30kg)
2	-4	32" (0.81m)	36" (0.91m)	66~99LBS (30~45kg)
3	O (Preset)	36" (0.91m)	42" (1.07m)	99~143LBS (45~55kg)
4	+5	42" (1.07m)	48" (1.22m)	143~187LBS (65~85kg)
5	+9	48" (1.22m)	54" (1.37m)	187~264LBS (85~120kg)
6	+12	54"(1.37m)	58" (1.47m)	264~330LBS (120~150kg)

**CLOCKWISE FOR POSITIVE NUMBERS (+)**



**COUNTER-CLOCKWISE FOR NEGATIVE NUMBERS (-)**

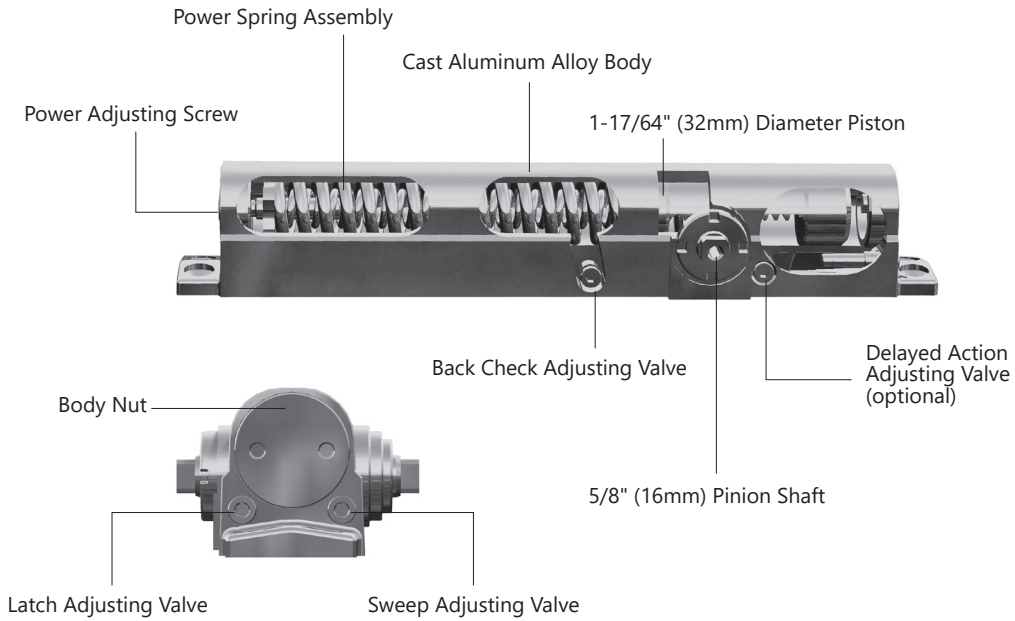


The closing force for DC8516 series door closers is adjustable from size 1 to size 6, as outlined in ANSI Standard A156.4. When these series of door closers are installed and adjusted to confirm to ADA reduced opening force requirements (5 lbs max.) for interior doors, they may not have adequate closing force to reliably close and latch door. Power adjustments charted on this page are recommended where possible to ensure proper door control

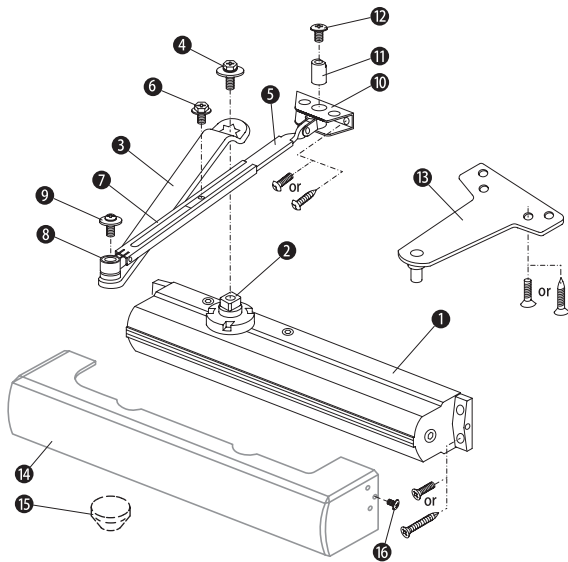
**CAUTION!!**

Turns required are approximate because of various door conditions and locations. You may have to further adjust spring tension to suit your requirements

**CUTAWAY VIEW**



**EXPLODED DIAGRAM**

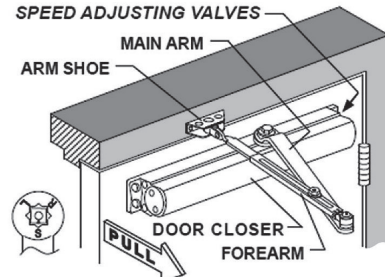
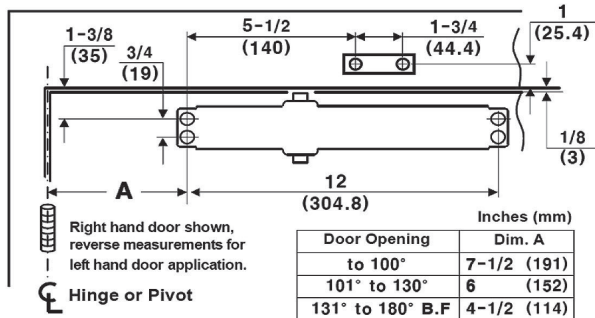


1. Closer Body
2. Pinion Shaft
3. Main Arm
4. Pinion Arm Screw
5. Adjustable Arm
6. Adjustable Arm Screw
7. Adjustable Sleeve
8. Pivot Bushing
9. Pivot Screw
10. Regular Shoe Plate
11. Bushing
12. Reg / PA Screw
13. Parallel Shoe
14. Cover, Slim or Full
15. Pinion Cap
16. Cover Screw

MOUNTING DIAGRAMS

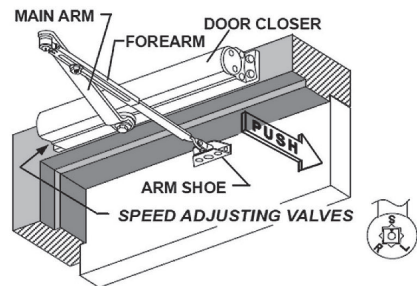
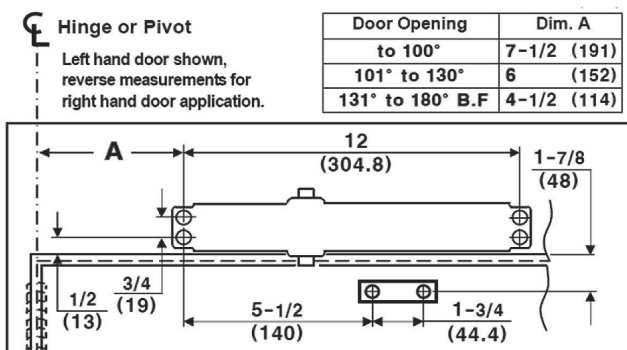
**Regular Mounting (Pull Side)**

Regular arm is the most common and strongest mounting option. Usually the closer is mounted on the door and the arm is mounted on the frame



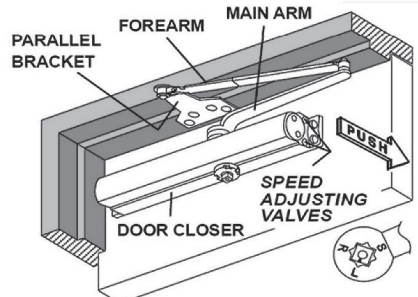
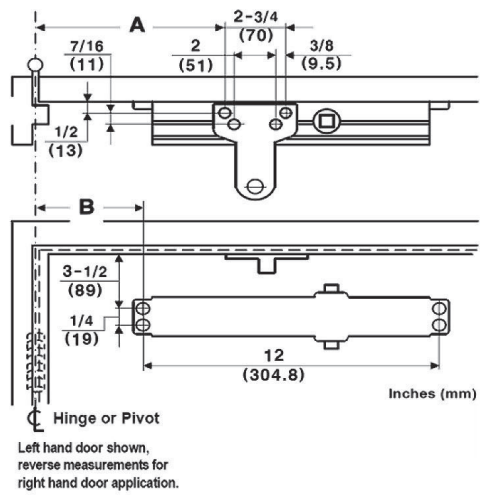
**Top Jamb Mounting (Push Side)**

Closer body is mounted to the frame with the arm straight out. Ideal for exterior door installations. You must consider frame depth reveal. Extended arm may be required



**Parallel Arm Mounting (Push Side)**

Closer body on door with parallel bracket on stop of frame. Arm is parallel to the door and does not stick out. Parallel arm installations have 25% less power than regular pull side mounting





**STANDARD ARMS**

**Regular / Parallel Arm with bracket**

Regular Non-handed arm with adjustable slider can be used for a wide range of frame conditions and can be mounted to hinge (pull) side, top jamb

For Parallel arm, use parallel arm bracket to mount on stop of frame on other (push) side of the door. Frame should be reinforced for parallel arm bracket

**OPTIONAL ARMS**

**DC8516HO**



Non-handed arm with adjustable round slide arm for a wide range of frame conditions. Open to desired range then tighten screw & lock nut and door will hold in that position every time until changed. For parallel mount use parallel arm bracket

**DC8516CUSH**



Non-handed heavy duty forged arm with cushion stop, parallel arm mount. Must use frame reinforcement in stop to mount

**DC8516ST**

Single lever (track) arm with a surface mounted closer designed for interior use on narrow head frames and top rails. Offers three mounting positions: Pull Side, Push Side and Top Jamb

**DC8516STH**



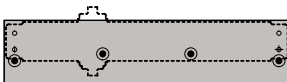
The Hold-Open options allows for hold-open points at 85°, 90°, 95°, 100°, 105° or 110° depending on clip location in track

**OPTIONAL DROP PLATES – Narrow Top Rail**

For use on doors with glass where the drop plates cover the back of the closer, for a more aesthetic view from the front. Also used when top rail is narrow and prevents the closer from being mounted to a surface of wood or metal. Correct installations will permit 180° maximum opening. Please see drop plate installation guide for detailed instructions. Drop plates available for DC85 closer with full cover or slim covers

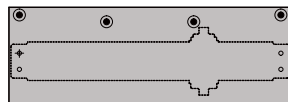
**DCDP85P1:**

Drop Plate for DC8516 with Full Cover Pull Side Mounting



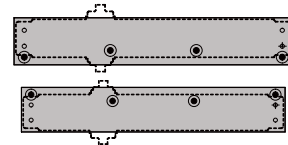
**DCDP85P2:**

Drop Plate for DC8516 with Full Cover Push Side Mounting



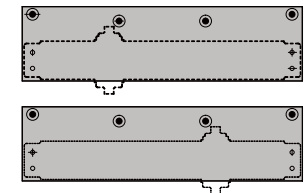
**DCDP85P3:**

Drop Plate for DC8516 with Slim Cover Pull Side Door Mount or Push Side Jamb Mount



**DCDP85P4:**

Drop Plate for DC8516 with Slim Cover Push Side Door Mount or Jamb Mount





OPTIONAL COVERS

**DCCV85F**

Plastic Full Cover



**DCCV85SLC**

Plastic Slim Cover



**DCCV85FSS**

Stainless Steel Cover



PARALLEL ARM BRACKET

**DCBK**

Parallel Arm Bracket



FIXING PACKS

**DCFP85**

Standard self-tapping screws (SRT) for closer body



**DCFPBK**

Standard fixing pack for parallel arm bracket




**DCFPSNB**

Standard sex nuts and bolts (SNB) fixing pack



## HOW TO ORDER

### Stocked DC85 Door Closer

Product	Power Size	Function	Finish
<b>DC85</b> 1	<b>16</b> 2	<b>DA</b> 3	<b>AL</b> 4
<b>PRODUCT</b>	<b>POWER SIZE</b>		<b>FUNCTION</b>
 DC85 Series	1-6		Blank Door Closer with Sleeve Arm, Plastic Full Cover (Standard) DA Door Closer with Delayed Action HO Door Closer with Friction Hold Open CUSH Door Closer with Cush Arm ST Door Closer with Slide Track Arm* STH Door Closer with Slide Track Hold Open Arm*

\*Slide track arm is only available for AL finish

#### 4 FINISH

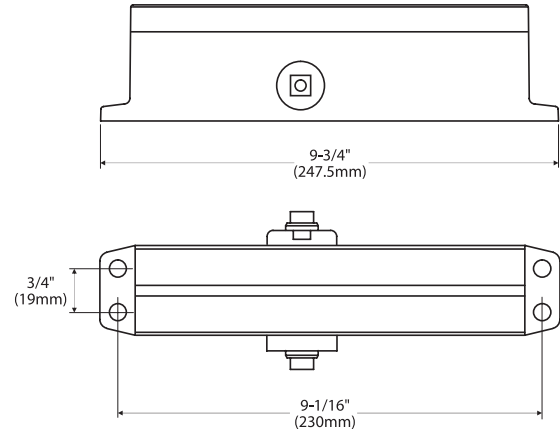
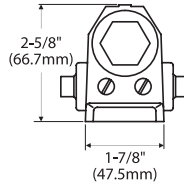
- AL 28 Aluminum Painted
- DU 20 Duro/Dark Bronze Painted
- 19G Graphite Black

### ACCESSORY PRODUCT IDENTIFICATION

Item No.	Description
<b>DCCV85F</b>	Plastic Full Cover for DC85 Series Door Closer
<b>DCCV85SLC</b>	Plastic Slim Cover for DC85 Series Door Closer
<b>DCCV85FSS</b>	Stainless Steel Cover for DC85 Series Door Closer
<b>DC8516HO</b>	Friction Hold Open Arm for DC85 Series Door Closer
<b>DC8516CUSH</b>	Cush Arm for DC85 Series Door Closer
<b>DC8516ST</b>	Slide Track Arm for DC85 Series Door Closer
<b>DC8516STH</b>	Slide Track Hold Open Arm for DC85 Series Door Closer
<b>DCDP85P1</b>	Drop Plate for DC85 Series Door Closer w/Full Cover, Pull Side Mount
<b>DCDP85P2</b>	Drop Plate for DC85 Series Door Closer w/Full Cover, Push Side Mount
<b>DCDP85P3</b>	Drop Plate for DC85 Series Door Closer w/Slim Cover, Pull Side Door Mount or Push Side Jamb Mount
<b>DCDP85P4</b>	Drop Plate for DC85 Series Door Closer w/Slim Cover, Push Side Door or Jamb Mount

# STANDARD DUTY DOOR CLOSER DC6114/DC6126

## ANSI/BHMA Grade 1



### SPECIFICATIONS

<b>DC6114 Adjustable Power Size</b>	1 Thru 4; meets ADA Barrier-Free requirements
<b>DC6126 Adjustable Power Size</b>	2 Thru 6
<b>Body</b>	One piece Aluminum Alloy Body
<b>Design</b>	Rack-and-Pinion
<b>Valves</b>	Separate and independent latch, sweep and back-check pressure valves
<b>Handing</b>	Non-Handed
<b>Cover</b>	Standard Closer comes Less Cover; optional Slim Cover available by special order
<b>Packing</b>	Tri-packed
<b>Piston</b>	34mm (1-11/32") diameter
<b>Pinion Journals</b>	16mm (5/8") diameter
<b>Projection</b>	66.7mm (2-5/8"), without cover

### CODE COMPLIANCE



ANSI/BHMA A156.4 Grade 1 Closers  
 ANSI A117.1 ADA Accessibility (DC6114 Only)  
 UL Listed for ANSI/UL10B and UL10C,  
 CAN/ULC S104 up to 3 Hours  
 UL 228 UBC Standard 7-2 (1997) NFPA 252  
 NFPA 80 National Fire Protection - Fire Door Assembly  
 NFPA101 National Fire Protection - Life Safety  
 ANSI/BHMA A156.18 Finishes

### STANDARD FINISHES

- AL Aluminum Painted
- DU Duro/Dark Bronze Painted

*For additional finish options not listed, contact Sales Department for MOQ and lead times*

### FEATURES

---

#### Aluminum Alloy Body

Closer bodies are cast of special aluminum alloy and machined to accommodate interactive steel components under operation conditions

#### Rack & Pinion Operation

Provides a smooth constant control of the door through its full opening and closing cycle. 180° door swing can be achieved when door, frame, and/or arm do not interfere

#### Non-Handed

DC6126/DC6114 door closer is non-handed and can be installed on either right or left hand swing doors

#### Sweep Speed Control Valve

Allows adjustment of door speed from the door's 90° open position down to approximately 10° from the closed position

#### Latch Speed Control Valve

Allows adjustment of door latch speed from approximately 10° down to the door's fully closed position

#### Tri-Packed

DC61 Series closers are packed with self-tapping (SRT), sex nuts & bolts (SNB) and parallel arm (PA) bracket to allow for regular, top jamb, and parallel arm installations

#### Adjustable Back-Check Valve

Provides control of the door in the opening cycle, beginning at approximately 75° of door opening. Back check cushions the door opening when the door is forcibly opened beyond its preadjusted setting

#### Multi-Sized Door Closer

Adjustable through the power range of 1 through 4, DC6114 Door Closer conforms to the opening force requirements of the ADA and ANSI/BHMA standard A117.1 for interior doors

### OPTIONAL COVERS

---

#### DCCV61SLC

Plastic Slim Cover

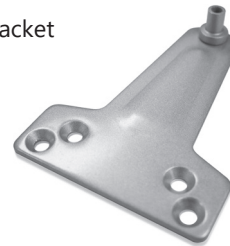


### PARALLEL ARM BRACKET

---

#### DCBK

Parallel Arm Bracket



### FIXING PACKS

---

#### DCFP61

Standard fixing pack for closer body



#### DCFPBK

Standard fixing pack for parallel arm bracket

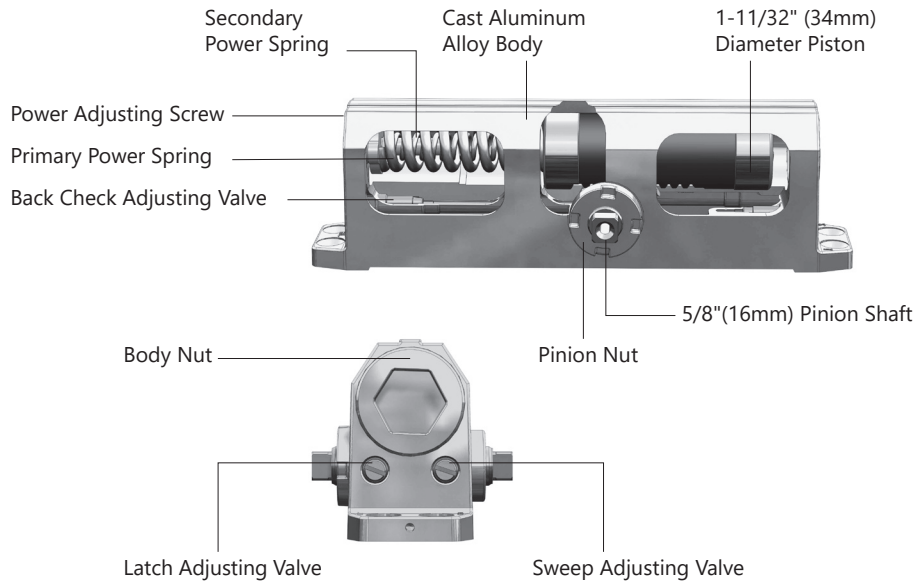


#### DCFPSNB

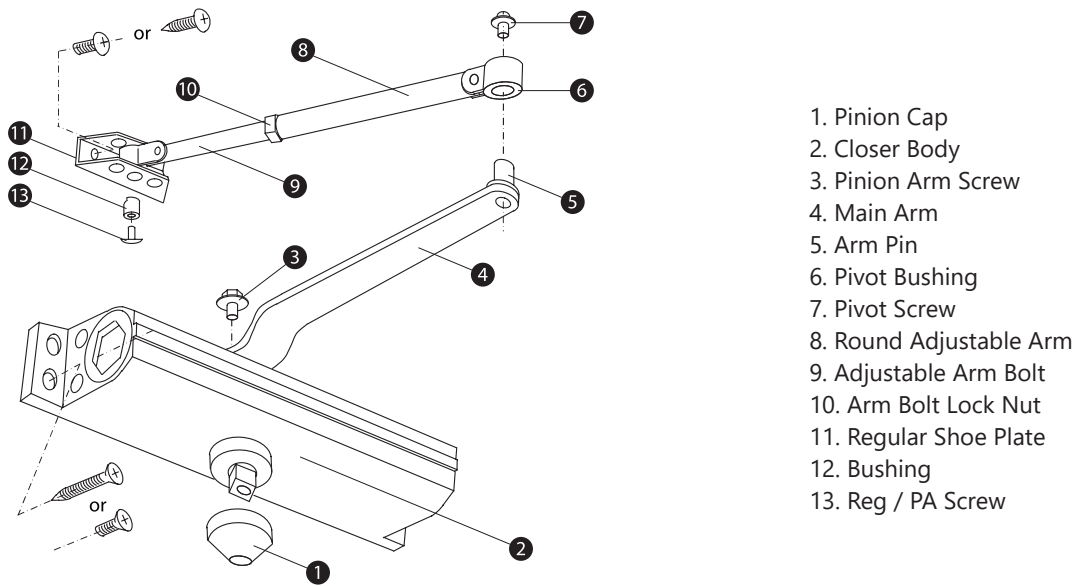
Standard sex nuts and bolts (SNB) fixing pack



CUTAWAY VIEW



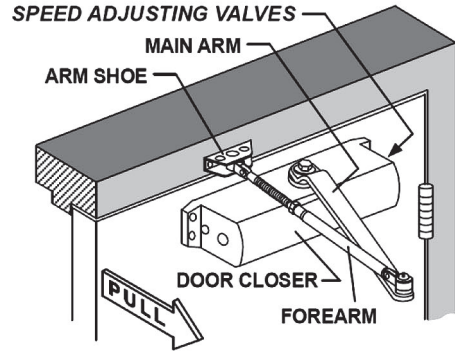
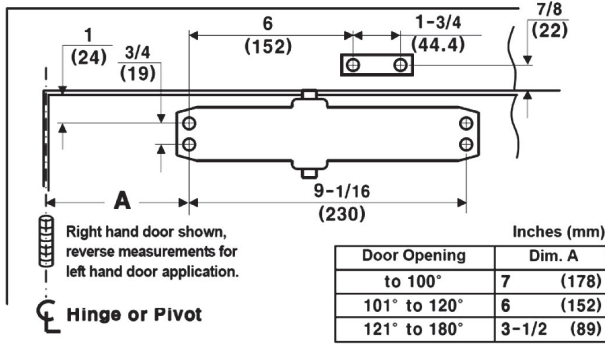
EXPLODED DIAGRAM



MOUNTING DIAGRAMS

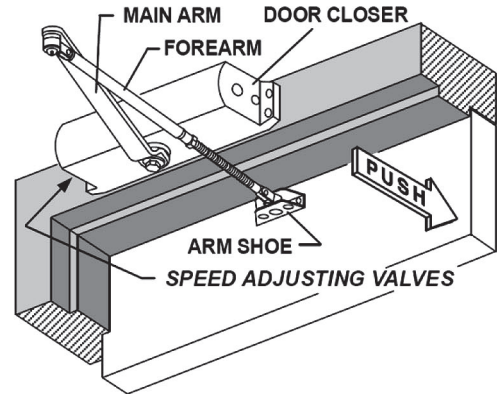
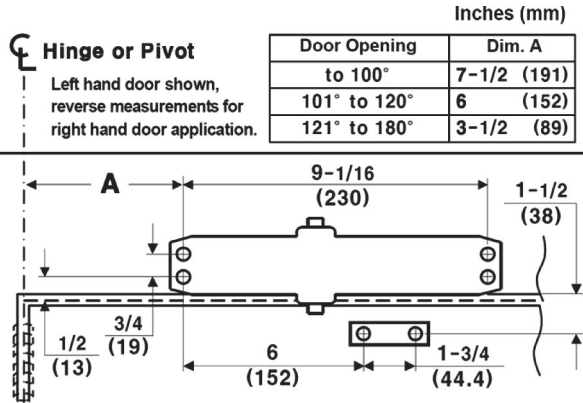
**Regular Mounting (Pull Side)**

Regular arm is the most common and strongest mounting option. Usually the closer is mounted on the door and the arm is mounted on the frame



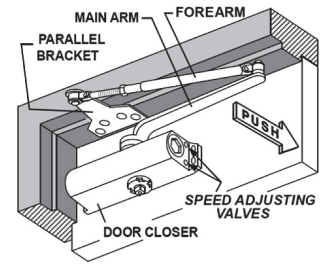
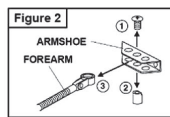
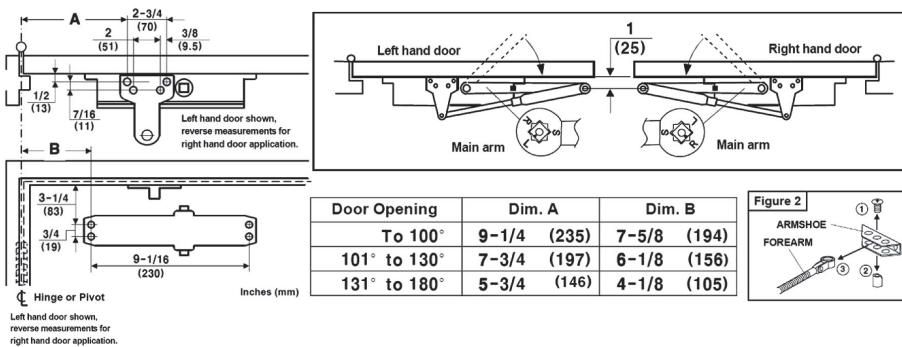
**Top Jamb Mounting (Push Side)**

Closer body is mounted to the frame with the arm straight out. Ideal for exterior door installations. You must consider frame depth reveal. Extended arm may be required



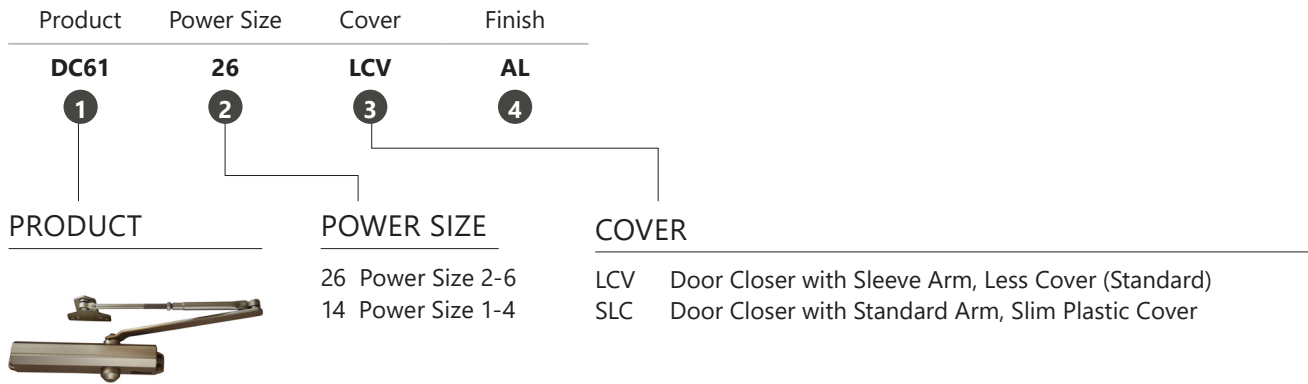
**Parallel Arm Mounting (Push Side)**

Closer body on door with parallel bracket on stop of frame. Arm is parallel to the door and does not stick out. Parallel arm installations have 25% less power than regular pull side mounting



## HOW TO ORDER

### Stocked DC61 Door Closer



DC61 Series

#### ④ FINISH

- AL 28 Aluminum Painted
- DU 20 Duro/Dark Bronze Painted

### ACCESSORY PRODUCT IDENTIFICATION

Item No.	Description
<b>DCCV61SLC</b>	Plastic Slim Cover for DC61
<b>DCDP61P1</b>	Drop Plate for DC61 Series Door Closer Top Jamb, Narrow Drop Plate
<b>DCDP61P2</b>	Drop Plate for DC61 Series Door Closer Parallel Arm, Wide Drop Plate
<b>DCBK</b>	Parallel Arm Bracket for DC61
<b>DCFP61</b>	Standard Fixing Pack for DC61 Closer Body
<b>DCFPBK</b>	Standard Fixing Pack for Parallel Arm Bracket
<b>DCFPSNB</b>	Standard Sex Nuts and Bolts (SNB) Fixing Pack

## INOX Door Closer CROSS REFERENCES

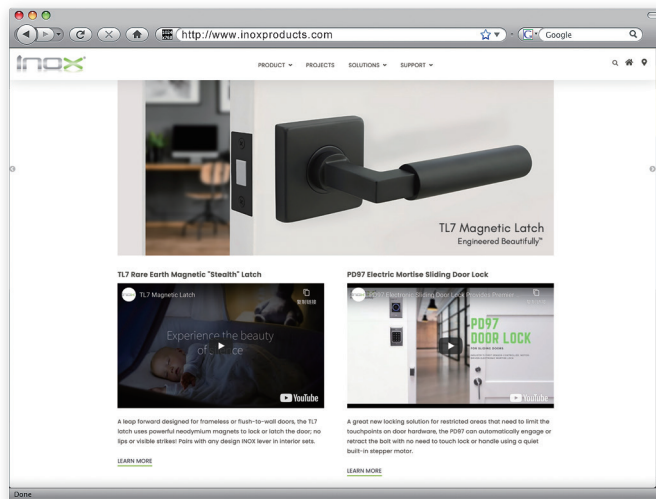
INOX®	LCN	NORTON	DORMA	CAL-ROYAL	HAGER	SARGENT	DOR-O-MATIC	CORBIN RUSSWIN	YALE
DC9016	4041	7500	8900	CR441	5100	281	SC70	DC3200 DC6200	4400
DC8516	1460FC	8501	8600	CR801	5200	1431	SC80	5000	3501
DC6126 DC6114	1260	160	640	300	5300	1131	S660	900	50

## INOX Door Closer ANSI CODE REFERENCES

ANSI No. Grade 1	INOX® Door Closer	Function
<i>(Surface Closers- Modern Type, with Cover)</i>		
C02011/C72011	DC9016	Regular Mounting
C02021/C72021	DC9016	Parallel Arm Mounting
C02041/C72041	DC9016	Top Jamb Mounting
C02051/C72051	DC9016HO	Regular Mounting Hold Open
C02061/C72061	DC9016HO	Parallel Arm Mounting Hold Open
C02211/C72211	DC9016ST	Regular Mounting Slide Track
C02221/C72221	DC9016STH	Regular Mounting Slide Track Hold Open
C02011/C32011	DC8516/DC6126/6114SLC	Regular Mounting
C02021/C32021	DC8516/DC6126/6114SLC	Parallel Arm Mounting
C02041/C32041	DC8516/DC6126/6114SLC	Top Jamb Mounting
C02051/C32051	DC8516HO	Regular Mounting Hold Open
C02061/C32061	DC8516HO	Parallel Arm Mounting Hold Open
C02211/C32211	DC8516ST	Regular Mounting Slide Track
C02221/C32221	DC8516STH	Regular Mounting Slide Track Hold Open
<i>(Surface Closers- Modern Type, No Cover)</i>		
C03011/C33011	DC8516LCV/DC6126/6114LCV	Regular Mounting
C03021/C33021	DC8516LCV/DC6126/6114LCV	Parallel Arm Mounting
C03041/C33041	DC8516LCV/DC6126/6114LCV	Top Jamb Mounting
C03051/C33051	DC8516HOLCV	Regular Mounting Hold Open
C03061/C33061	DC8516HOLCV	Parallel Arm Mounting Hold Open
C03211/C33211	DC8516STLCV	Regular Mounting Slide Track
C03221/C33221	DC8516STHLCV	Regular Mounting Slide Track Hold Open
<i>PT 4 Options A, B, C, D, E, F, H</i>		







Please visit our website  
[www.inoxproducts.com](http://www.inoxproducts.com)  
for more technical and new product information.

**Unison Hardware, Inc.**  
6 Wayne Court, Sacramento CA 95829, USA Tel: +1.916.388.1888  
Email: [info@unisonhardware.com](mailto:info@unisonhardware.com)