

ANSI/BHMA GRADE 1
Multipoint Trim



BP/MU Universal Multipoint Trim

CONTENTS

Page 03	Escutcheon Plates
Page 04	Lever Designs and Finishes
Page 06	BP/MU Multipoint Trim Specifications
Page 07	BP/MU Functions
Page 08	Euro Cylinder Profile
Page 10	Parts and Services
Page 12	Exploded Diagrams
Page 14	Manufacturers' Doors Comparison Chart
Page 15	How to Order

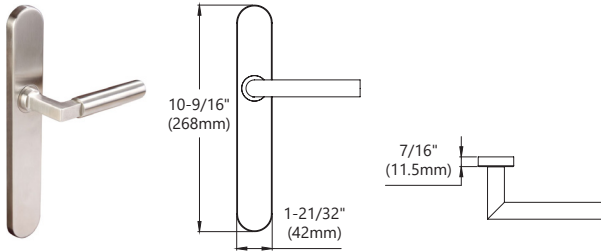
Disclaimer: All information in this catalog has been deemed accurate as of the date of printing. We are continuously improving and expanding our line in an effort to offer our clients the finest quality products and services; therefore, Unison Hardware, Inc., reserves the right to alter this information or correct printing errors at any time.

©2022 July, Unison Hardware, Inc. All Rights Reserved. Issue 2.0

BP/MU ESCUTCHEON PLATES

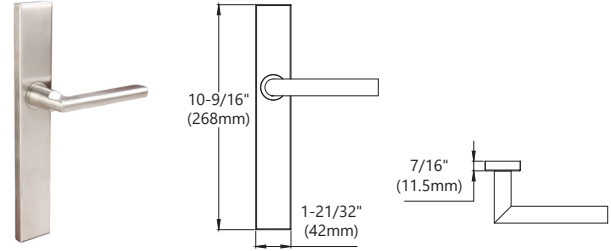
BP Plate

Passage (Outside and Inside)
Patio (Outside)



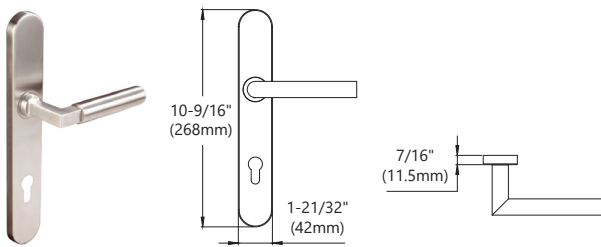
MU Plate

Passage (Outside and Inside)
Patio (Outside)



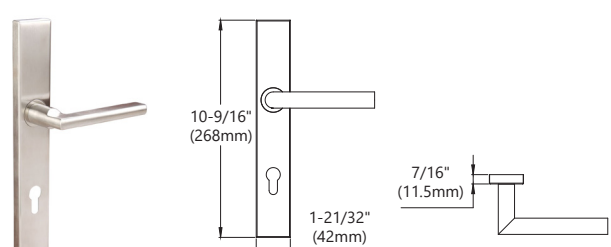
BP Plate

Euro Entry (Outside and Inside)
Euro Patio (inside)



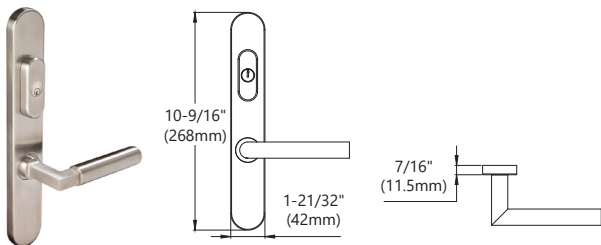
MU Plate

Euro Entry (Outside and Inside)
Euro Patio (inside)



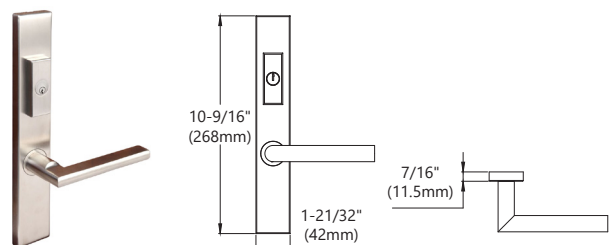
BP Plate

American Entry (Outside)



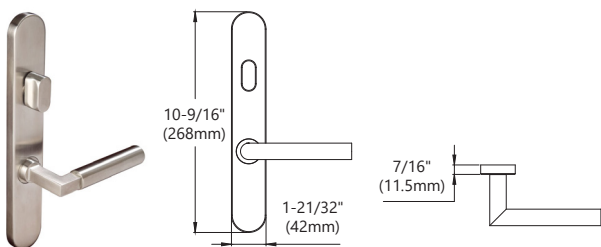
MU Plate

American Entry (Outside)



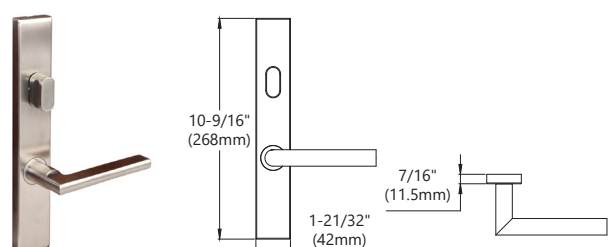
BP Plate

American Patio (Inside)
American Entry (Inside)



MU Plate

American Patio (Inside)
American Entry (Inside)



BP/MU LEVER DESIGNS AND FINISHES



101 Cologne
(32, 32D)



103 Oslo
(32, 32D)



104 Brussels
(32, 32D)



105 Frankfurt
(32, 32D, 10B, 19G)



106 Copenhagen
(32, 32D, 10B)



107 Stockholm
(32, 32D)



108 Vienna
(PVD4, SP*)



210 Air-Stream
(32, 32D, 10B)



211 Breeze
(32, 32D, 10B)



213 Cabernet
(32, 32D)



214 Champagne
(32, 32D, 10B)



221 Aurora
(32, 32D, SP*, 10B, 19G)



223 Phoenix
(32D, SP*)



225 Waterfall
(32, 32D)



226 Summer
(32, 32D)



227 Stratus
(32, 32D)



243 Sunrise
(32, 32D, 10B, 19G, PVD4)



251 Sequoia
(32, 32D, SP*)



276 Plaza
(32, 32D, 19G, PVD4)



300 Napa
(32, 32D, 19G)

BP/MU LEVER DESIGNS AND FINISHES



311 Crest
(32, 32D, 10B)



318 Café
(32, 32D, 10B,



319 Hampton
(32, 32D, 10B, 19G)



320 Empire
(32, 32D, 19G)



344 Ecco
(32, 32D)



345 Tokyo
(32, 32D, 10B, 19G)



351 Toronto
(32, 32D)



379 Arctic
(32, 32D)

* PVD4 finish available in MU only in the 108, 243, and 276 lever designs

19G finish available in MU only in the 105, 221, 243, 276, 300, 318, 319, 320 and 345 lever designs

Lever Designs with "Return To Door" (RTD)*

*Compliant with California Fire Code



102 Munich
(32, 32D)



109 Stuttgart
(32, 32D)



244 Twilight
(32, 32D, 10B, 19G)



346 Osaka
(32, 32D, 10B, 19G)

*SP is a two-tone stainless steel finish: satin (32D) finish on lever grip, polished (32) finish on lever neck and roses

BP/MU MULTIPOINT TRIM

ANSI/BHMA Grade 1



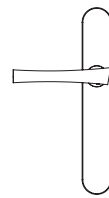
SPECIFICATIONS

Material	Stainless Steel Levers and Escutcheons
Application	For swing door multipoint locking system
Door Thickness	1-3/4" with lockcase in the center of the door
Thick Door Kits	Available on request
Cylinder to Lever Center Distance	3-5/8" (92mm)
Spindle	8 x 8mm Square
Faceplate and strike	Plate with square corners Radius corners available on request
Cylinder	Schlage C Keyway 5-pin Cylinder, 2 keys included. Keying service available
Gasket	Weather seal gasket for outside trim

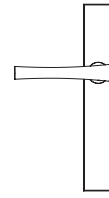
FEATURES

- Bi-direction spring provides lever support.
- Multiple fixing distance for thru-bolts on same plate to fit most manufacturers' door prep, and concealed fixing for a beautiful installation.
- Schlage C Keyway for both American or Euro Profile Cylinder.
- Weather seal gasket for outside trim.

ESCUTCHEON PLATES



BP Plate Size:
10-1/2" x 1-5/8" x 7/16"
(268 x 42 x 11mm)



MU Plate Size:
10-1/2" x 1-5/8" x 7/16"
(268 x 42 x 11mm)

Description	Part Number	Standard Finish
MU Trim available with either high or low lever	MU	32D Satin Stainless Steel 32 Bright Stainless Steel SP Split Finish 10B Oil Rubbed Bronze PVD4 Satin Brass 19G Graphite Black
BP Trim available with either high or low lower	BP	32D Satin Stainless Steel 32 Bright Stainless Steel SP Split Finish 10B Oil Rubbed Bronze

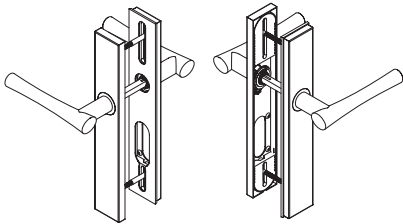
BP/MU MULTIPOINT TRIM

Function

MA10:

Passage Function

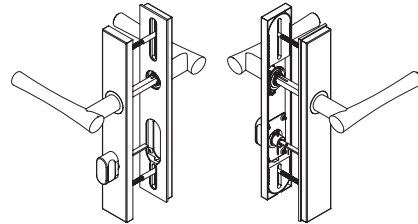
Both outside and inside levers are active. No deadlock.



MA15:

Patio Function for Locks using Tailpiece Hub

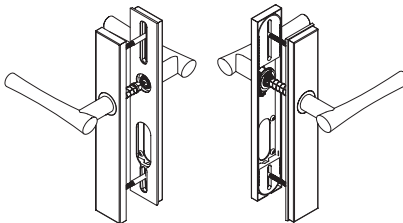
Both outside and inside levers are active. Inside thumbturn locks deadbolt using tailpiece.



MA20:

Half Passage, Half Dummy.

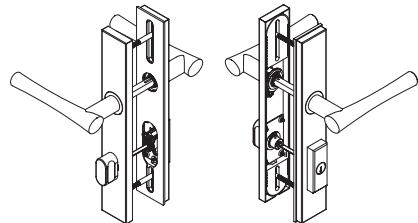
Outside lever is inactive. Inside lever is active.



MA55:

Entry Function for Locks using American Cylinder.

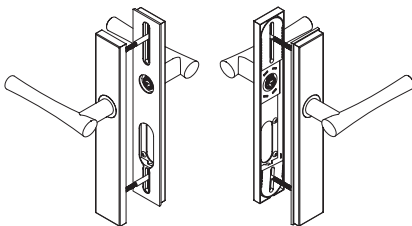
Both outside and inside levers are active. Key from outside and thumbturn on inside locks the deadbolt, using American cylinder with tailpiece.



MADP:

Full Dummy

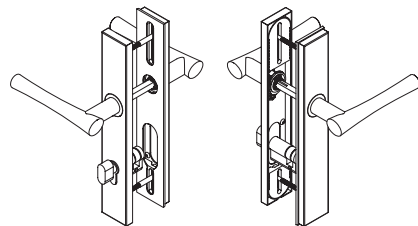
Both outside and inside levers are inactive.



MA25:

Patio Function for Locks using Euro-profile Cylinder

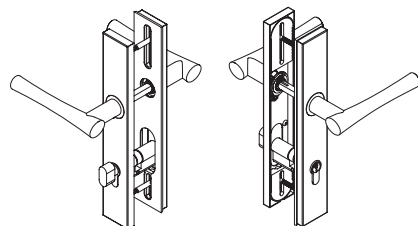
Both outside and inside levers are active. Inside thumbturn locks deadbolt using Euro cylinders with cam.



MA35:

Entry Function for Locks using Euro-profile Cylinder

Both outside and inside levers are active. Key from outside and thumbturn on inside locks the deadbolt, using Euro cylinders with cam.



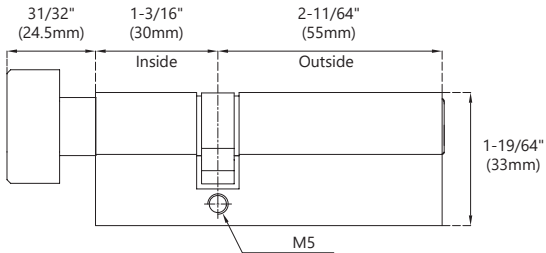
EURO-PROFILE CYLINDERS FOR PATIO AND ENTRY FUNCTION

CYEU-5530TK

Total Length: 85mm (55/30)

Door Thickness: 2-1/4" – 2-1/2" (57 – 63mm)

Lock Case Off-Center

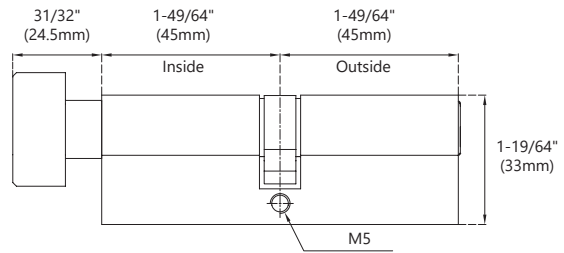


CYEU-4545TK

Total Length: 90mm (45/45)

Door Thickness: 2-1/4" – 2-1/2" (57 – 63mm)

Lock Case Centered

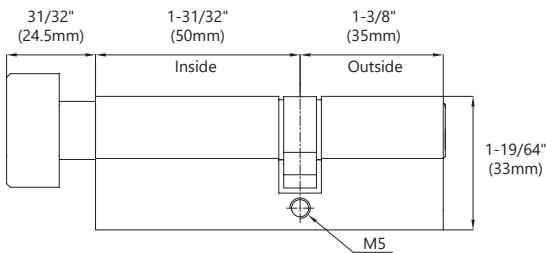


CYEU-3550TK

Total Length: 85mm (35/50)

Door Thickness: 2-1/4" – 2-1/2" (57 – 63mm)

Lock Case Off-Center

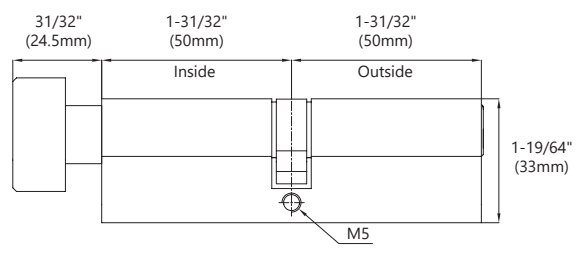


CYEU-5050TK

Total Length: 100mm (50/50)

Door Thickness: 2-3/4" – 3" (70 – 76mm)

Lock Case Centered

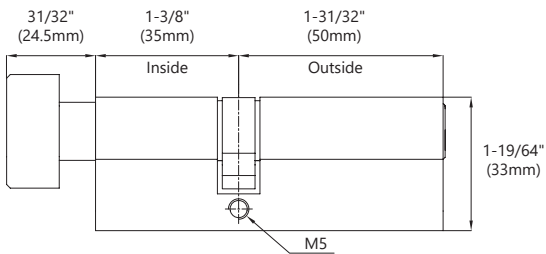


CYEU-5035TK

Total Length: 85mm (50/35)

Door Thickness: 2-1/4" – 2-1/2" (57 – 63mm)

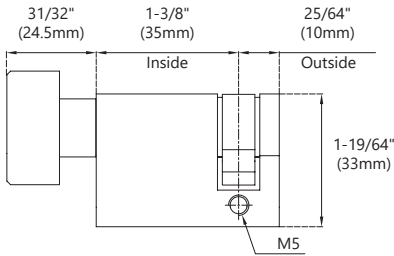
Lock Case Off-Center



EURO-PROFILE CYLINDERS FOR PATIO AND ENTRY FUNCTION

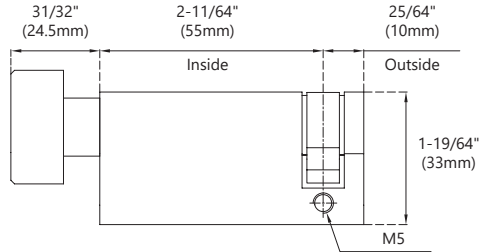
CYEU-1035TK

Total Length: 45mm (10/35)
 Door Thickness: 1-3/4" (45mm)



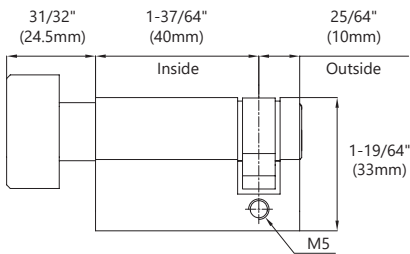
CYEU-1055TK

Total Length: 65mm (10/55)



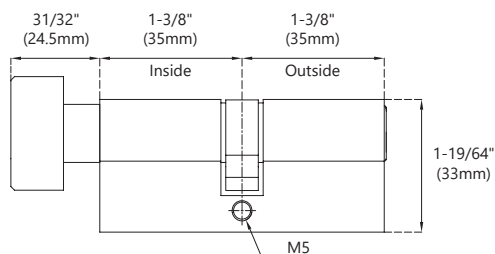
CYEU-1040TK

Total Length: 50mm (10/40)
 Door Thickness: 2" (51mm)



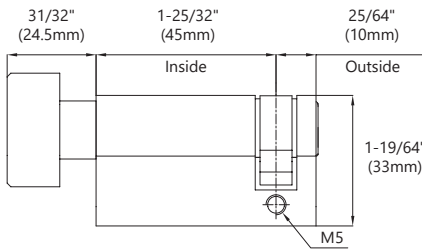
CYEU-3535TK

Total Length: 70mm (35/35)
 Door Thickness: 1-3/4" (45mm)
 Lock Case Centered



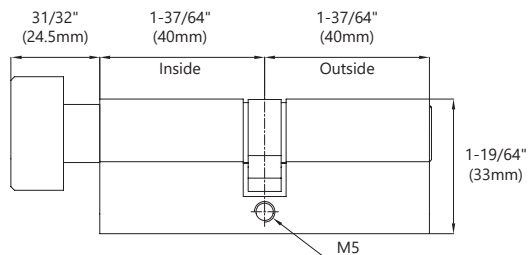
CYEU-1045TK

Total Length: 55mm (10/45)
 Door Thickness: 2-1/4" - 2-1/2" (57-63mm)



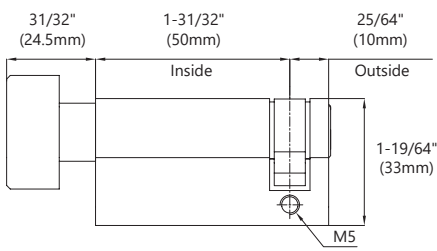
CYEU-4040TK

Total Length: 80mm (40/40)
 Door Thickness: 2" (51mm)
 Lock Case Centered



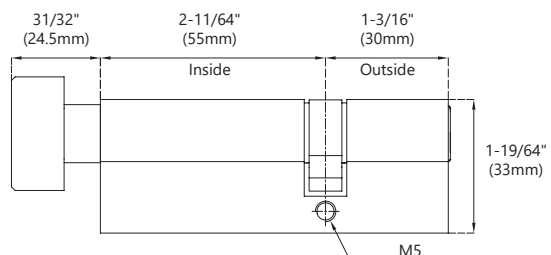
CYEU-1050TK

Total Length: 60mm (10/50)
 Door Thickness: 2-3/4" - 3" (70 - 76mm)



CYEU-3055TK

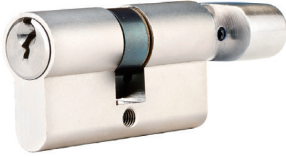
Total Length: 85mm (30/55)
 Door Thickness: 2-1/4" - 2-1/2" (57 - 63mm)
 Lock Case Off-Center



PARTS AND SERVICES

EURO CYLINDERS

Also called Profile Cylinders



Double Cylinder
Key & Thumbturn



Single Cylinder
(Also called Half Cylinder)
Thumbturn Only

MATERIAL

Solid Brass

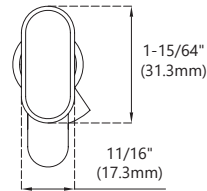
KEYWAY

Schlage C Keyway, 5 Pin.
3 Keys per Cylinder.

FINISHES

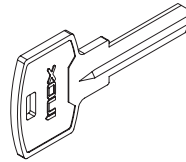
15 Satin Nickel
26 Polished Chrome
10B Oil Rubbed Bronze

CYLINDER THUMB-TURN



KEY BLANKS

Key Blanks for Euro Cylinder,
Schlage C Keyway,
for 5 Pin Cylinder
LSK03-55C-NP



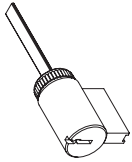
CYLINDER SCREW

Each cylinder includes 1 breakable machine screw
M5x80mm for fixing cylinder to multipoint lock case with
backset up to 2-3/4" (70mm).

PARTS AND SERVICES

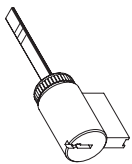
AMERICAN CYLINDER

Also called Knob Cylinder



CYSC00-40

American Cylinder with 40mm Tailpiece
Door Thickness: 1-3/4"



CYSC00-70

American Cylinder with 70mm Breakable Tailpiece
Door Thickness: 2"-3"

MATERIAL

Solid Brass

KEYWAY

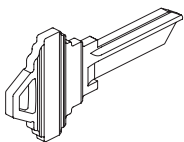
Schlage C Keyway, 6 Pin, with 2 Keys, Keyed Different*. (*5-Pin available on request)

FINISH OF CYLINDER BARREL

Satin Chrome (US26D)

KEY BLANKS

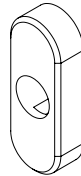
Key Blanks for American
Cylinder, Schlage C Keyway,
for 6 Pin Cylinder
LSK01-6SC-NP



AMERICAN CYLINDER ESCUTCHEONS

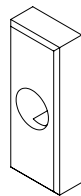
EC-64R

American Cylinder Escutcheon, Oblong,
64 x 24.5 x 12.5mm



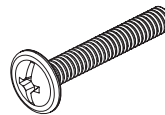
EC-63S

American Cylinder Escutcheon, Rectangle,
64 x 24.5 x 12.5mm



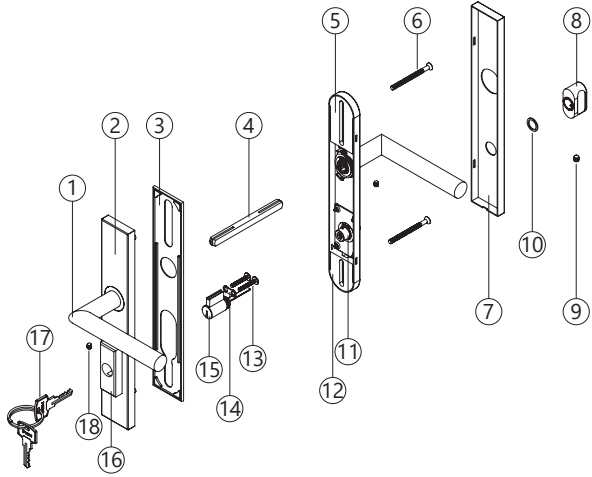
FS-M4 x 20-PAN

Machine Screw M4 x 20mm Pan Head, for fixing knob
cylinder to escutcheon



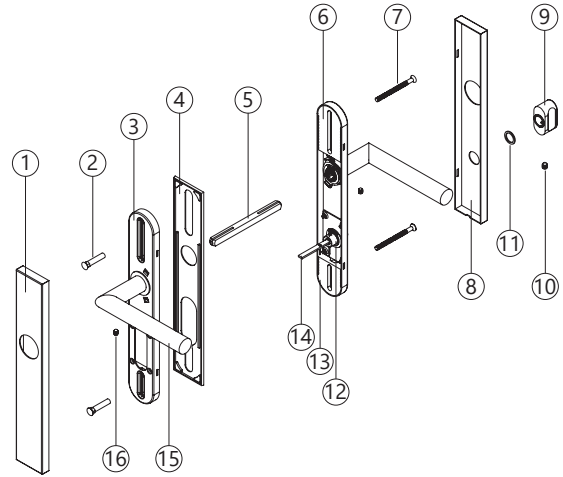
EXPLODED DIAGRAMS

MA55 (ENTRY FOR AMERICAN CYLINDER)



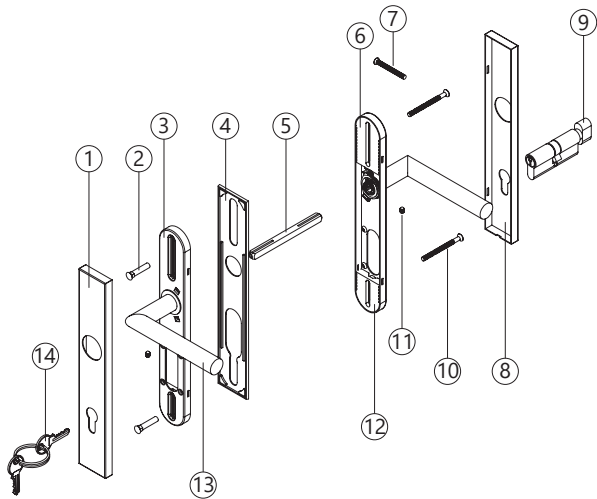
- | | |
|--|---|
| 1. Outside Lever | 10. Thumbturn Washer |
| 2. Outside Plate and Sub-plate for Entry | 11. Thumbturn Shaft |
| 3. Gasket | 12. Nylon Insert |
| 4. Spindle 8mm Square | 13. Screws for fixing American Cylinder |
| 5. Inside Sub-plate with Lever | 14. Bracket for Cylinder |
| 6. M5 Thru-bolt | 15. American Cylinder |
| 7. Inside Plate | 16. American Cylinder Escutcheon |
| 8. Thumbturn | 17. Keys |
| 9. Set screw for Thumbturn | 18. Lever Set Screw |

MA15 (AMERICAN PATIO)



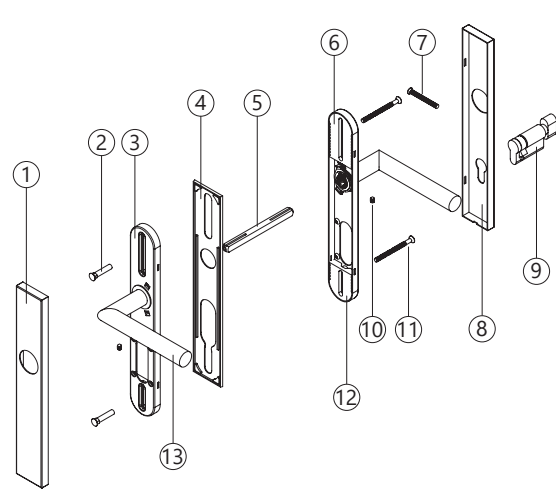
- | | |
|--------------------------------|-----------------------------|
| 1. Outside Plate | 9. Thumbturn |
| 2. Bolt Sleeve | 10. Set screw for Thumbturn |
| 3. Outside Sub-plate | 11. Thumbturn washer |
| 4. Gasket | 12. Thumbturn Shaft |
| 5. Spindle 8mm Square | 13. Nylon Insert |
| 6. Inside Sub-plate with Lever | 14. Tail-piece |
| 7. M5 Thru-bolt | 15. Outside Lever |
| 8. Inside Plate | 16. Lever Set Screw |

MA35 (ENTRY FOR EURO CYLINDER)



- | | |
|--------------------------------|---------------------|
| 1. Outside Plate | 8. Inside Plate |
| 2. Bolt Sleeve | 9. Euro Cylinder |
| 3. Outside Sub-plate | 10. M5 Thru-bolt |
| 4. Gasket | 11. Lever Set Screw |
| 5. Spindle 8mm Square | 12. Nylon Insert |
| 6. Inside Sub-plate with Lever | 13. Outside Lever |
| 7. Screws for fixing Cylinder | 14. Keys |

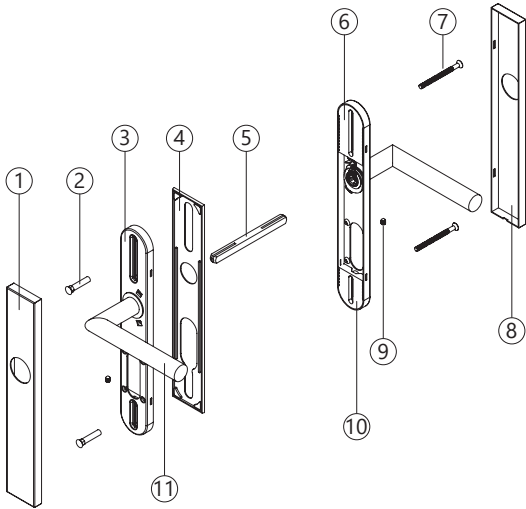
MA25 (EURO PATIO)



- | | |
|--------------------------------|---------------------|
| 1. Outside Plate | 8. Inside Plate |
| 2. Bolt Sleeve | 9. Euro Cylinder |
| 3. Outside Sub-plate | 10. Lever Set Screw |
| 4. Gasket | 11. M5 Thru-bolt |
| 5. Spindle 8mm Square | 12. Nylon Insert |
| 6. Inside Sub-plate with Lever | 13. Outside Lever |
| 7. Screws for fixing Cylinder | |

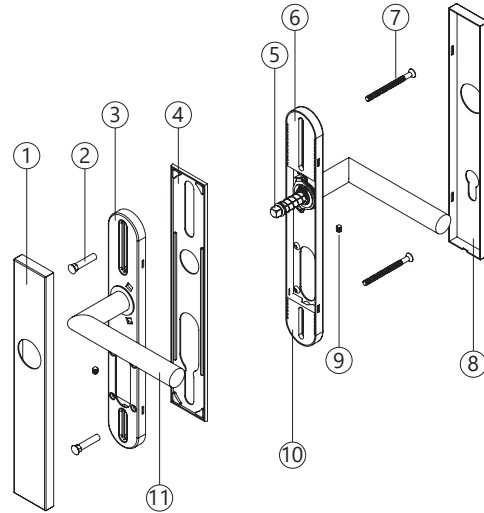
EXPLODED DIAGRAMS

MA10 (PASSAGE)



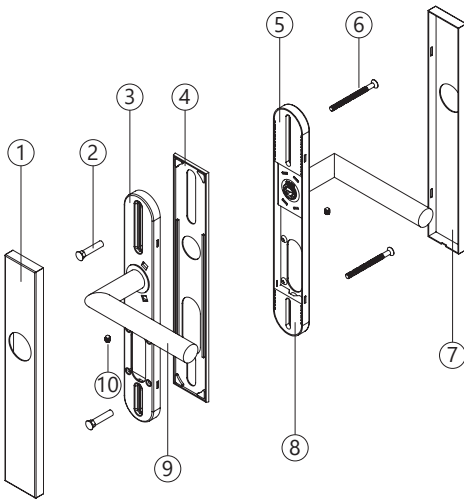
- 1. Outside Plate
- 2. Bolt Sleeve
- 3. Outside Sub-plate
- 4. Gasket
- 5. Spindle 8mm Square
- 6. Inside Sub-plate with Lever
- 7. M5 Thru-bolt
- 8. Inside Plate
- 9. Lever Set Screw
- 10. Nylon Insert
- 11. Outside Lever

MA20 (HALF PASSAGE HALF DUMMY)



- 1. Outside Plate
- 2. Bolt Sleeve
- 3. Outside Sub-plate
- 4. Gasket
- 5. Spring Spindle 8mm Square
- 6. Inside Sub-plate with Lever
- 7. M5 Thru-bolt
- 8. Inside Plate
- 9. Lever Set Screw
- 10. Nylon Insert
- 11. Outside Lever

MADP (FULL DUMMY)



- 1. Outside Plate
- 2. Bolt Sleeve
- 3. Outside Sub-plate
- 4. Gasket
- 5. Inside Sub-plate with Lever
- 6. M5 Thru-bolt
- 7. Inside Plate
- 8. Nylon Insert
- 9. Outside Lever
- 10. Lever Set Screw

BP/MU UNIVERSAL MULTIPOINT TRIM

Will INOX Standard BP/MU Plates Fit the following Locks and Door Prep?

Configuration	Door/Lock Manufacturer	Lever to Cylinder CTC	Lever to Thru-Bolt CTC	Cylinder to Thru-Bolt CTC	Emtek® Door Config.	Baldwin® Door Set Ref.	Standard INOX® Multipoint Trim Fit
Lever High, American Cylinder Below Lever	G-U®, Marvin Integrity®, Sierra Pacific Windows®, Superior®	3-5/8" (92mm)	2-9/16" (65mm)	1-3/8" (35mm)	DC #1	# 5	YES
Lever High, American Cylinder Below Lever	Pella®	3-5/8" (92mm)	2-7/8" (73mm)	1-7/8" (48mm)	DC #6	# 3	YES
Lever Low, American Cylinder Above Lever	G-U®, Pella®, Eagle®, Marvin Integrity®, Biltbest®, Hurd®, Sierra Pacific®, Willmar®	3-5/8" (92mm)	2-9/16" (65mm)	1-3/8" (35mm)	DC #2	# 5	YES
Lever Low, American Cylinder Above Lever	Ashland®, Marvin®, Milgard®, Caradco®, PGT®	3-5/8" (92mm)	1-13/16" (46mm)	1-13/16" (46mm)	DC #4	# 6	YES
Lever High, Euro Cylinder Below Lever	G-U®, Hoppe®, Hurd®, Eagle®, Kolbe & Kolbe®, Loewen®, Lincolen®, Norco®, Peachtree®, Pozzi®, Sierra Pacific®, Semco®, Vetter®, Weathershield®, Therma-Tru®	3-5/8" (92mm)	3-3/8" (86mm)	1-1/2" (38mm)	DC #5	# 1	YES
Lever High, Euro Cylinder Below Lever	G-U®, Hoppe®, Hurd®, Eagle®, Kolbe & Kolbe®, Loewen®, Lincolen®, Norco®, Peachtree®, Pozzi®, Sierra Pacific®, Semco®, Vetter®, Weathershield®	3-5/8" (92mm)	2-7/16" (62mm)	1-13/16" (46mm)	N/A	#4	YES

INOX Multipoint trim will NOT fit the following door configurations:



































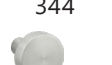
Lever Low, American Cylinder Above Lever	Anderson®	4-1/8" (105mm)	2-1/16" (52mm)	2-5/16" (59mm)	DC #3	# 2	NO
Lever Low, American Cylinder Above Lever	W & F Manufacturing®	6" (152mm)			DC # 7	N/A	NO

Disclaimer: INOX® is not liable for any change of specifications by door and lock manufacturers

HOW TO ORDER

BP/MU Trim

To order locksets, please describe the additional requirements in the same sequence as below. Please see price book for parts or additional service upcharge.

Trim	Lever	Function	Lever Mounting	Finish	Handing
MU 1	105 2	MA10 3	-VH 4	32D 5	LH 6
ROSE	LEVER	FUNCTION			
	 101  102  103  104  105  106  107  108  109  210  211  213  214  217  221  223  225  226  227  243  244  251  276  300  311  318  319  320  344  345  346  351  379  380	MA10: Passage MA20: Half Passage, Half Dummy MA15: Patio Function - American Cylinder MA55: Entry Function - American Cylinder MA25: Patio Function - Euro-profile Cylinder MA35: Entry Function - Euro-profile Cylinder MADP: Full Dummy			

4 LEVER MOUNTING POSITION

VH = Lever High, Cylinder Below or No Cylinder

VL = Lever Low, Cylinder Below or No Cylinder

5 FINISH

Standard:



32D



C19G



C19



CGY



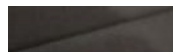
CDB



32



PVD4



10B



19G



SP

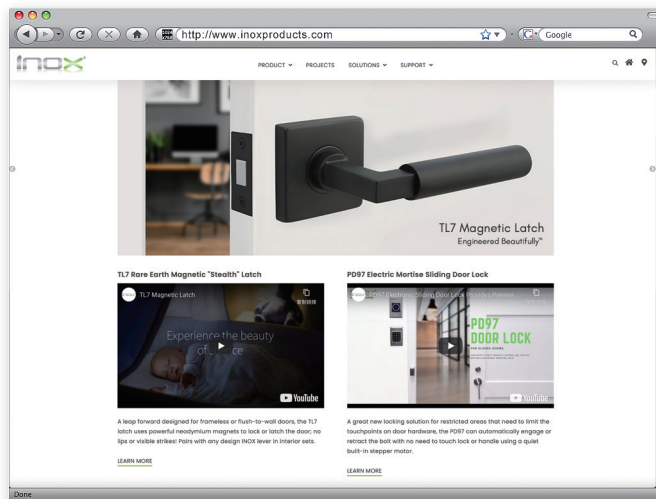
6 HANDING

RH = Right Hand

LH = Left Hand

RHR = Right Hand Reverse

LHR = Left Hand Reverse



Please visit our website
<https://www.inoxproducts.com>
for more technical and new product information.

Unison Hardware, Inc.
6 Wayne Court, Sacramento, CA 95829, USA Tel: +1.916.388.1888
Email: info@unisonhardware.com