



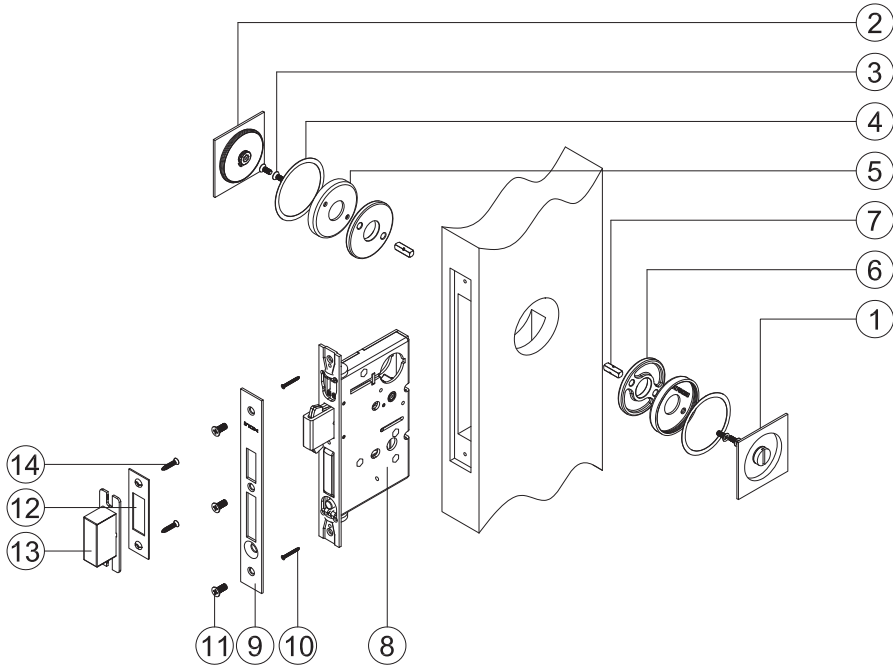
PD8000 PD5000 MORTISE LOCKSETS  
FOR SLIDING AND POCKET DOOR

With 22CF & 23CF Flush Pull

INSTALLATION INSTRUCTIONS  
(PM-ISPD8000-PD5000-CF-V20250325)

**Unison**  
UNISON HARDWARE INC.  
6 Wayne Court, Sacramento, CA 95829, USA  
Tel: +1.916.388.1888 Fax: +1.916.388.8322  
Email: info@unisonhardware.com Web: www.inoxproducts.com

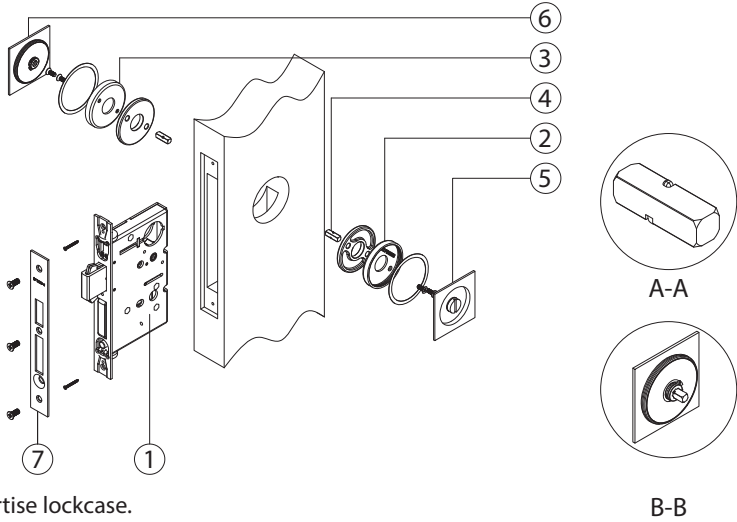
8000 Series Pocket Door Lock Set with door thickness 1-3/4" (45mm) Parts List:  
(With FH22CF/FH23CF Flush Pull)



Item	No.	Parts Description	Function			
			Privacy	Passage	Patio	Notes
Flush Pull Parts	1	Outside Flush Pull	1 EA	1 EA	1 EA	
	2	Inside Flush Pull	1 EA	1 EA	1 EA	
	3	M4X10mm Machine Screw	4 EA	4 EA	4 EA	For 1-3/4" door
	4	Washer	2 EA	2 EA	2 EA	For FH23CF Only
	5	Sub Rose	2 EA	2 EA	2 EA	
	6	1-3/4" Door Spacer	2 EA	2 EA	2 EA	
	7	Spindle	2 EA	---	1 EA	
Locks	8	Mortise Pocket Lock	1 EA	1 EA	1 EA	
	9	Armored Faceplate	1 EA	1 EA	1 EA	
	10	#8 screws for Inner Faceplate	2 EA	2 EA	2 EA	
	11	M4X6mm screws for Armored Faceplate	3 EA	3 EA	3 EA	
	12	Strike Plate	1 EA	1 EA	1 EA	
	13	Dust Box	1 EA	1 EA	1 EA	
	14	Screws for Strike Plate	2 EA	2 EA	2 EA	
Others		Door Prep Template	1 EA	1 EA	1 EA	
		Installation Instruction	1 EA	1 EA	1 EA	

Door thickness: 1-3/4" (45mm) FH22CF/FH23CF Flush Pull with PD8000 PD5000 Pocket Door Lock Installation Instructions:

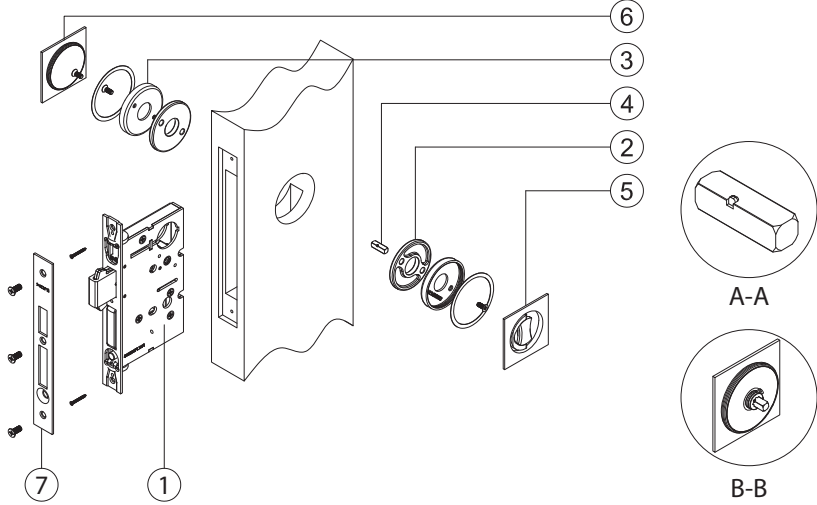
PD8000: For Passage, Privacy w/ Lockcase Function: PD8010, PD8440  
PD5000: For Privacy with Lockcase Function: PD5340



1. Install mortise lockcase.
2. Install outside sub rose & spacer with M4x10mm machine screw.
3. Install inside sub rose & spacer with M4x10mm machine screw.
4. Insert spindle into the spindle hole of mortise lockcase outside & inside.  
Note: Make sure the short side of the spindle is inserted into the lock body. See Section A-A.
5. Install outside flush pull.  
Note: Please make sure the spindle hole of the trim aligns the spindle. See section B-B.  
Please make sure the bolt operates smoothly after installation.
6. Install inside flush pull.  
Note: Please make sure the spindle hole of the trim aligns the spindle. See section B-B.  
Please make sure the bolt operates smoothly after installation.
7. Install faceplate with screws.

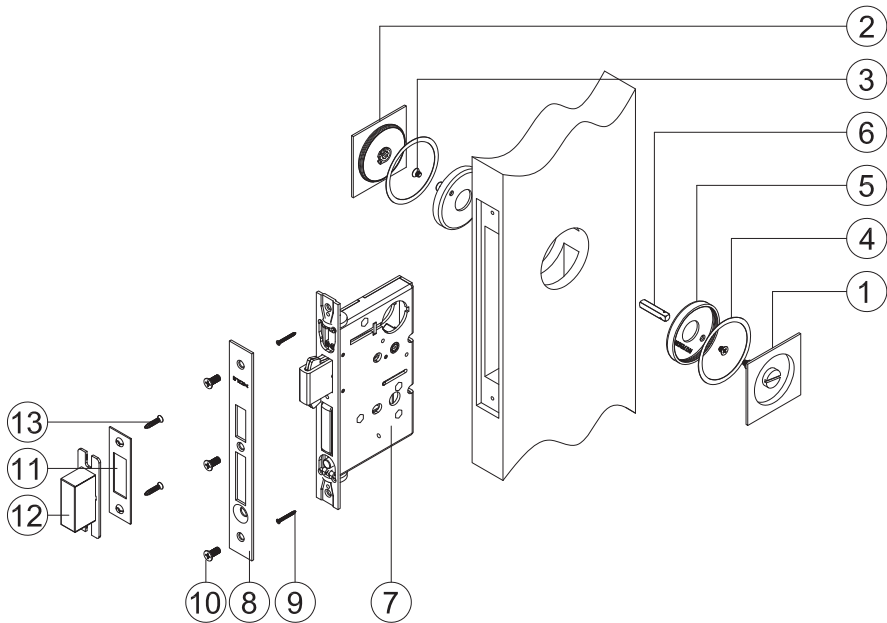
Door thickness: 1-3/4" (45mm) FH22CF/FH23CF Flush Pull with PD8000 PD5000 Pocket Door Lock Installation Instructions:

PD8000: For Patio Function: PD8460  
PD5000: For Patio Function: PD5360



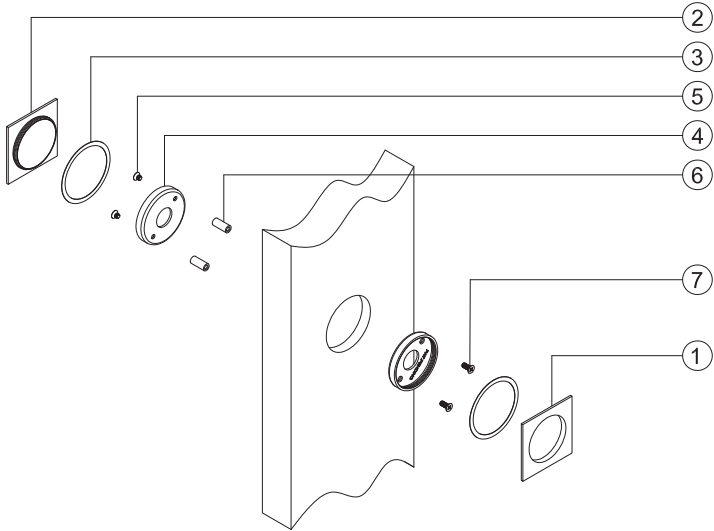
1. Install mortise lockcase.
2. Install inside sub rose & spacer with M4x10mm machine screw.
3. Install outside sub rose & spacer with M4x10mm machine screw.
4. Insert spindle into the spindle hole of mortise lockcase inside.  
Note: Make sure the short side of the spindle is inserted into the lock body. See Section A-A.
5. Install inside flush pull.  
Note: Please make sure the spindle hole of the trim aligns the spindle. See section B-B.  
Please make sure bolt operates smoothly after installation.
6. Install outside flush pull.
7. Install faceplate with screws.

8000 Series Pocket Door Lock Set with door thickness 1-3/8" (35mm) Parts List:  
(With FH22CF/FH23CF Flush Pull)



Item	No.	Parts Description	Function			
			Privacy	Passage	Patio	Notes
Flush Pull Parts	1	Outside Flush Pull	1 EA	1 EA	1 EA	
	2	Inside Flush Pull	1 EA	1 EA	1 EA	
	3	M4X5mm Machine Screw	4 EA	4 EA	4 EA	For 1-3/8" door
	4	Washer	2 EA	2 EA	2 EA	For FH23CF Only
	5	Sub Rose	2 EA	2 EA	2 EA	
	6	Spindle	1 EA	---	1 EA	
Locks	7	Mortise Pocket Lock	1 EA	1 EA	1 EA	
	8	Armored Faceplate	1 EA	1 EA	1 EA	
	9	#8 screws for Inner Faceplate	2 EA	2 EA	2 EA	
	10	M4X6mm screws for Armored Faceplate	3 EA	3 EA	3 EA	
	11	Strike Plate	1 EA	1 EA	1 EA	
	12	Dust Box	1 EA	1 EA	1 EA	
	13	Screws for Strike Plate	2 EA	2 EA	2 EA	
Others		Door Prep Template	1 EA	1 EA	1 EA	
		Installation Instruction	1 EA	1 EA	1 EA	

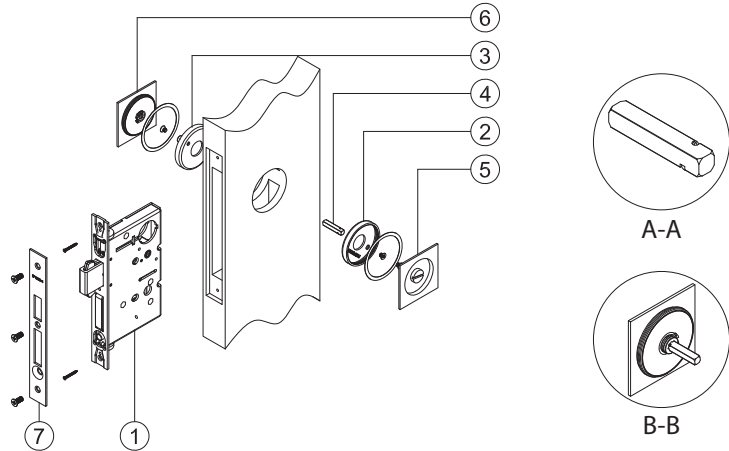
Pocket Door Lock Set with Door Thickness 1-3/8" (35mm) & 1-3/4" (45mm) Parts List:  
(With FH22CF/FH23CF Flush Pull)



Item	No.	Parts Description	Function
			Dummy Pair
Flush Pull Parts	1	Outside Flush Pull	1 EA
	2	Inside Flush Pull	1 EA
	3	Washer	4 EA
	4	Sub Rose	2 EA
	5	M4x10mm Machine Screw	2 EA
	6	M4x15mm Bolt Sleeve	2 EA
	7	M4x10 Machine Screw for 1-3/8" Door M4x20 Machine Screw for 1-3/4" Door	2 EA
Others		Door Prep Template	1 EA
		Installation Instruction	1 EA

Door thickness: 1-3/8" (35mm) FH22CF/FH23CF Flush Pull with PD8000 PD5000 Pocket Door Lock Installation Instructions:

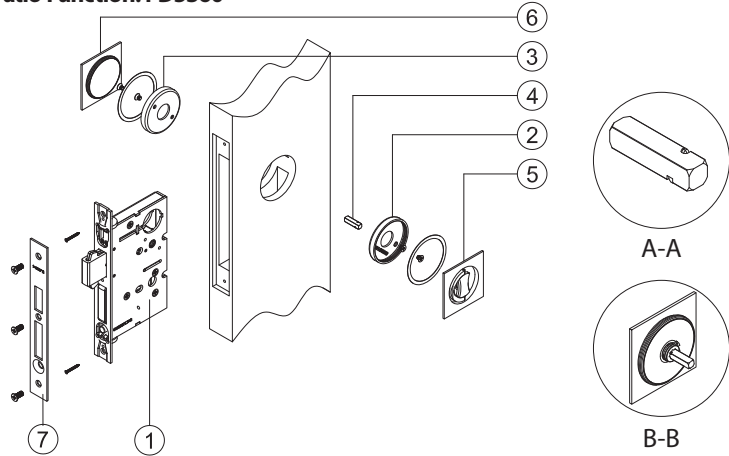
PD8000: For Passage, Privacy w/ Lockcase Function: PD8010, PD8440  
PD5000: For Privacy with Lockcase Funtion: PD5340



1. Install mortise lockcase.
2. Install outside sub rose with M4 x5mm machine screw.
3. Install inside sub rose with M4 x5mm machine screw.
4. Insert spindle into the spindle hole of mortise lockcase outside.  
Note: Make sure the long side of the spindle is inserted into the lock body. See Section A-A.
5. Install outside flush pull.  
Note: Please make sure the spindle hole of the trim aligns the spindle. See section B-B. Please make sure bolt operates smoothly after installation.
6. Install inside flush pull.  
Note: Please make sure the spindle hole of the trim aligns the spindle. See section B-B. Please make sure the bolt operates smoothly after installation.
7. Install faceplate with screws.

Door thickness: 1-3/8" (35mm) FH22CF/FH23CF Flush Pull with PD8000 PD5000 Pocket Door Lock Installation Instructions:

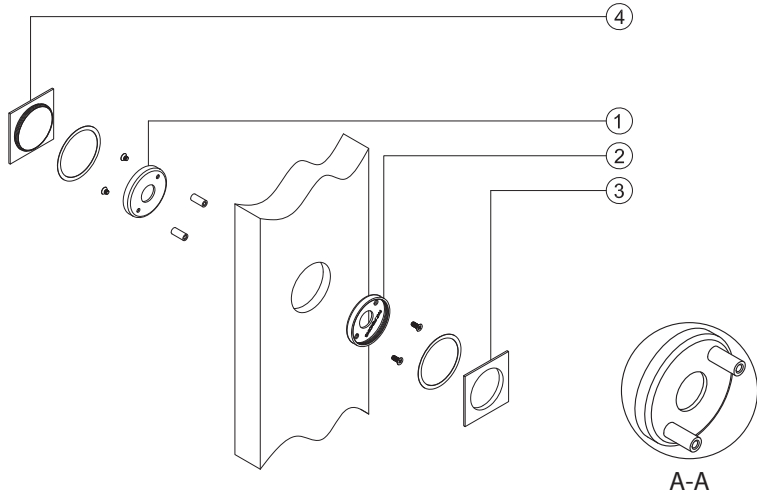
PD8000: For Patio Function: PD8460  
PD5000: For Patio Function: PD5360



1. Install mortise lockcase.
2. Install inside sub rose with M4 x5mm machine screw.
3. Install outside sub rose with M4 x5mm machine screw.
4. Insert spindle into the spindle hole of mortise lockcase.  
Note: Make sure the long side of the spindle is inserted into the lock body. See Section A-A.
5. Install inside flush pull.  
Note: Please make sure the spindle hole of the trim aligns the spindle. See section B-B. Please make sure bolt operates smoothly after installation.
6. Install outside flush pull.
7. Install faceplate with screws.

Door thickness: 1-3/8" (35mm) & 1-3/4" (45mm) FH22CF/FH23CF Flush Pull with Pocket Door Lock Installation Instructions:

For DummyPair Function: DP



1. Fix bolt sleeve on the inside sub rose with M4X10mm machine screw. See section A-A. (please use different size of screws according to door thickness)
2. Fix outside sub rose with M4 machine screws. (Please use different size of screws according to door thickness.)
3. Install outside flush pull.
4. Install inside flush pull.