

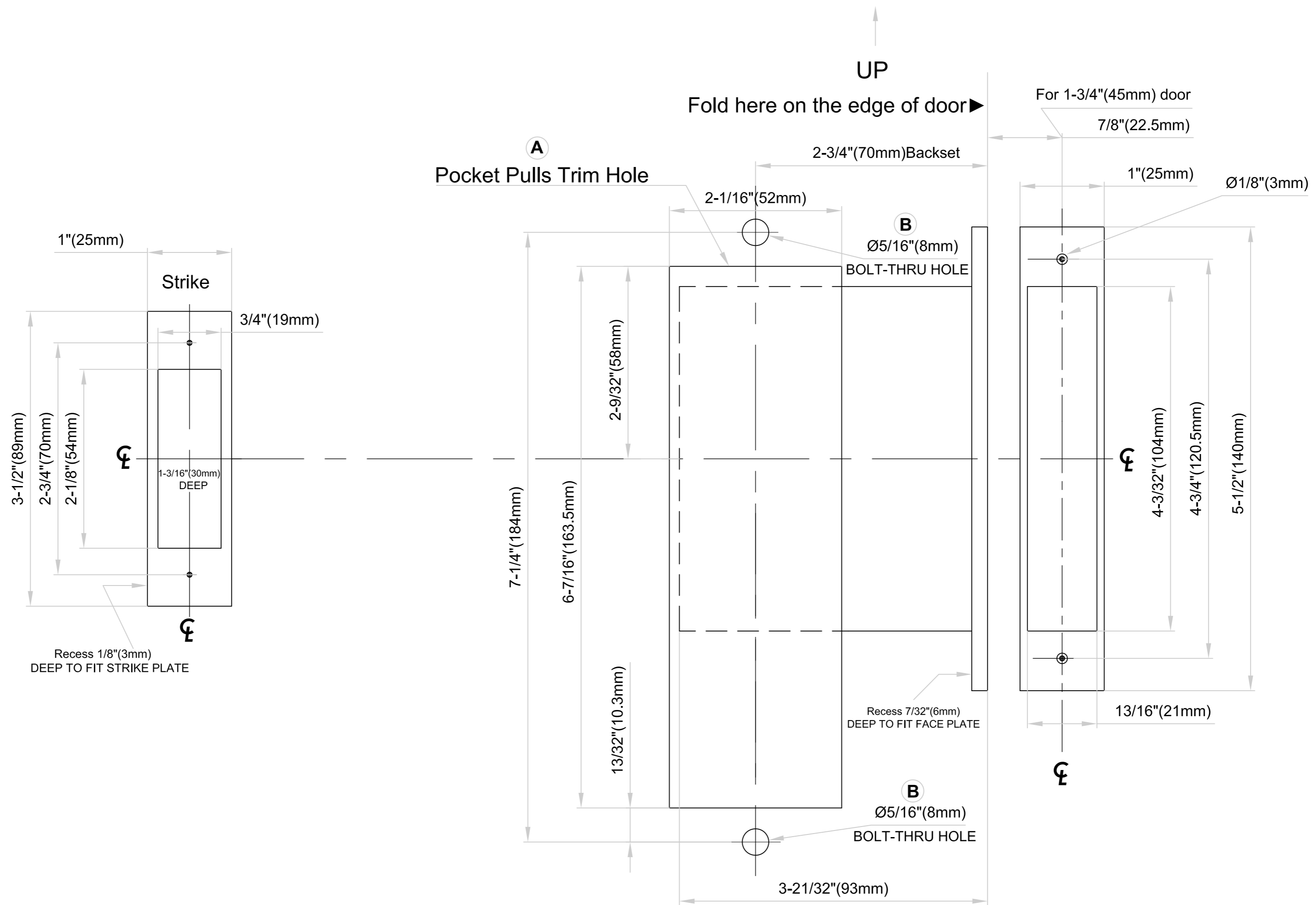
# Template For PD5000-234 Mortise Locks with FH27SL&17 Face Fixing Flush Pulls For 1-3/4"(45mm) Pocket Door

Case Size: 3-21/32" x 4-3/32" x 11/16"(93mm x 104mm x 17mm)

Backset: 2-3/4"(70mm)

Lock Front: 1" x 5-1/2" x 15/64"(25.4mm x 140mm x 6mm)

Cylinder to Thumb Turn: 1-3/16"(30mm)



FOR OPPOSITE HAND  
PLEASE SEE REVERSE SIDE

Dimensions do not provide allowances for door silencers,  
weather stripping, sound proofing or other additions to door or door frames.

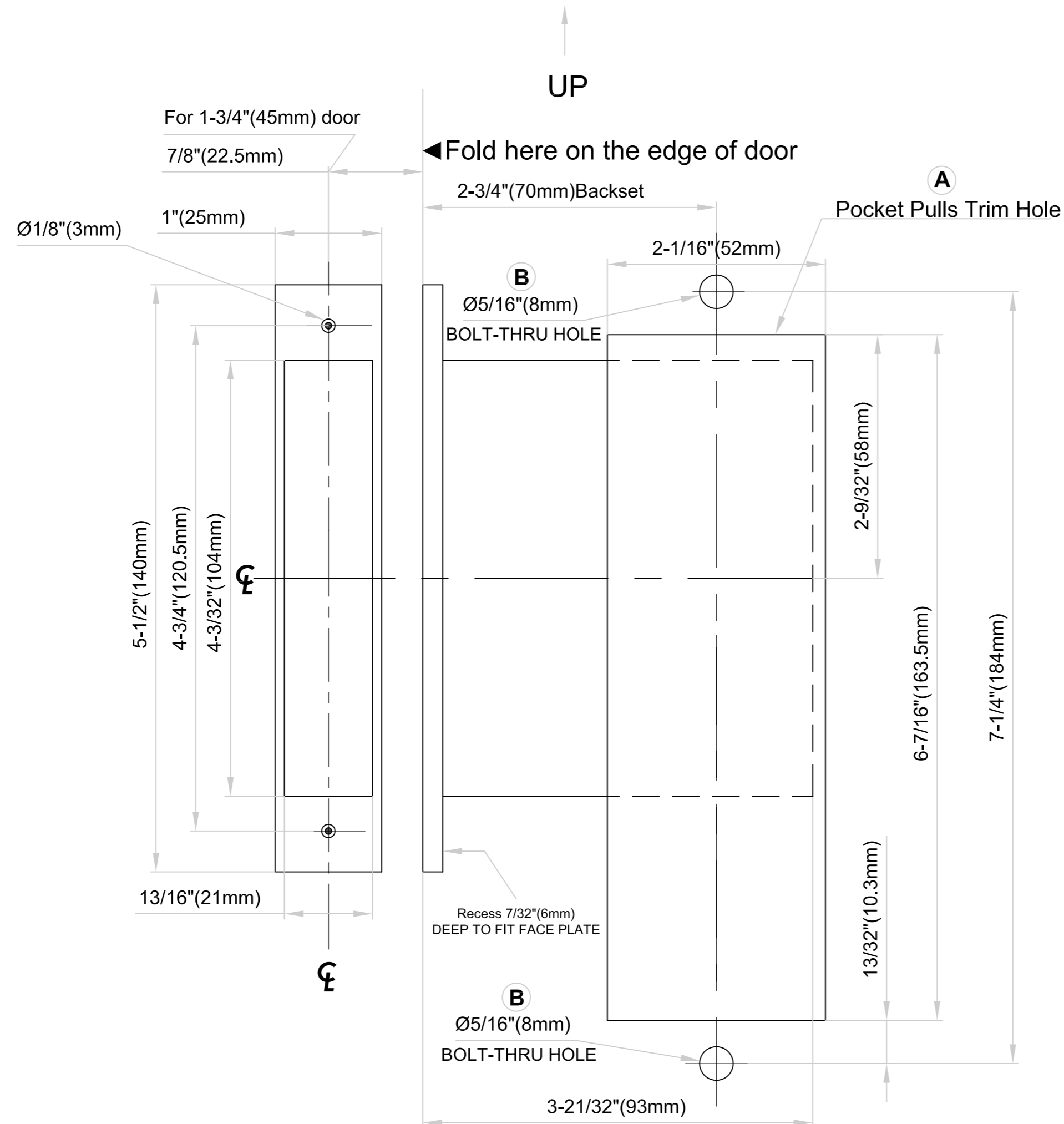
# Template For PD5000-234 Mortise Locks with FH27SL&17 Face Fixing Flush Pulls For 1-3/4"(45mm) Pocket Door

Case Size: 3-21/32" x 4-3/32" x 11/16"(93mm x 104mm x 17mm)

Backset: 2-3/4"(70mm)

Lock Front: 1" x 5-1/2" x 15/64"(25.4mm x 140mm x 6mm)

Cylinder to Thumb Turn: 1-3/16"(30mm)



### Door preparation using template supplied.

Please read the Installation Instruction Carefully before drilling any holes on the door.  
Choose the correct holes to drill for the corresponding functions.

Function	Item Ref.	Outside Holes			Inside Holes		
		A	B	C	A	B	C
PD5010	...XXX...	●	●		●	●	
PD5215	...XXX...	●	●		●	●	
PD5340	...XXX...	●	●		●	●	
PD5350	...XXX...	●	●		●	●	
PD5360	...XXX...	●	●		●	●	
DP	...XXX...	●	●		●	●	

FOR OPPOSITE HAND  
PLEASE SEE REVERSE SIDE

Match With Vertical Line Drawn On Door

Dimensions do not provide allowances for door silencers,  
weather stripping, sound proofing or other additions to door or door frames.