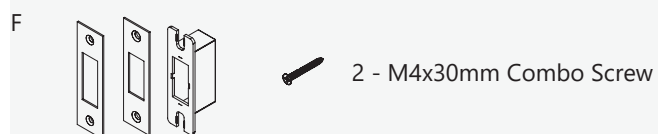
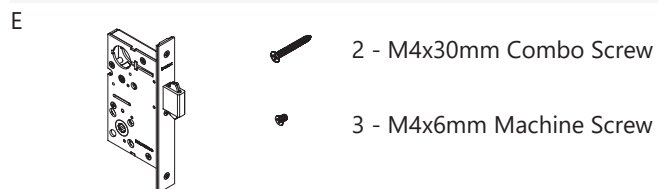
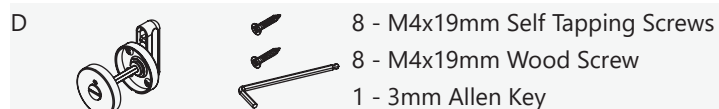
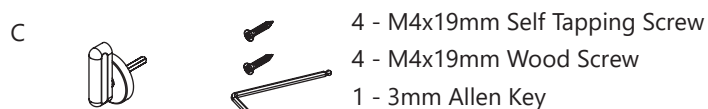
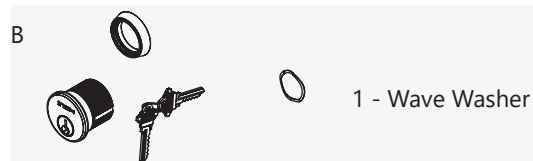
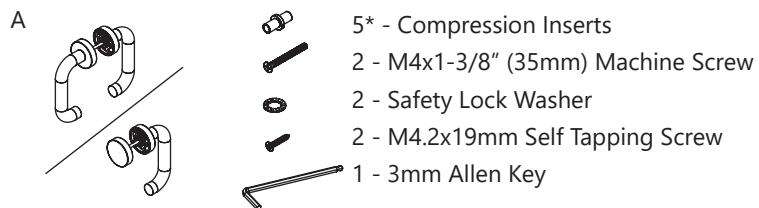


PD9500 Components List

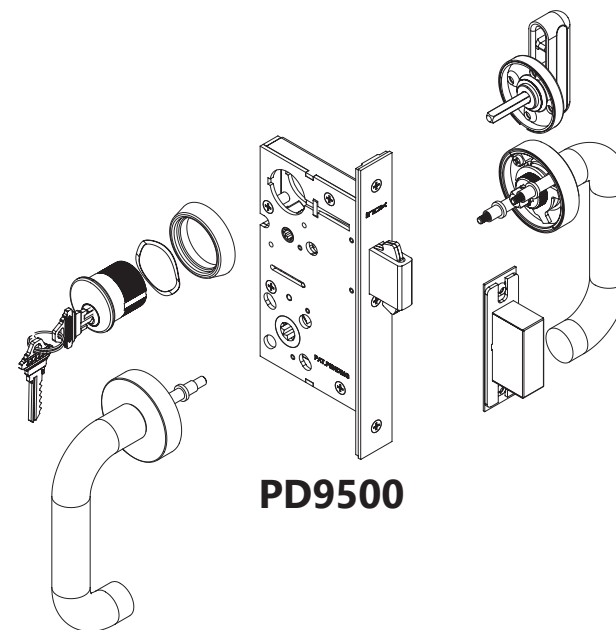
	Part Lists	40	50	60	70	95
A	X Series Trim	1EA	1EA	1EA	1EA	1EA
B	Cylinder & Keys	-	1EA	-	1EA	1EA
C	Thumbtum	-	1EA	1EA	-	-
D	Coin Tum Release with Thumbtum	1EA	-	-	-	-
E	Mortise Lock & Faceplate	1EA	1EA	1EA	1EA	1EA
F	Strike Plate w/ Dust Box	1EA	1EA	1EA	1EA	1EA



* Extra fasteners provided for convenience

Installation Instructions

PD9500 Emergency Egress Mortise Lockset for Sliding Door with X Series Trim or Surface Pull

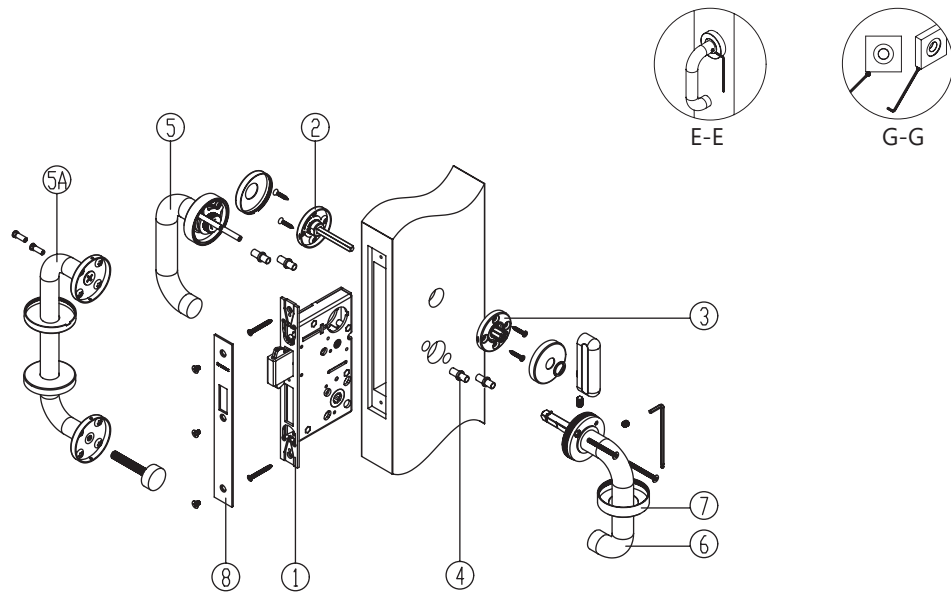


PD9500

This product has been tested and certified for UL1784.

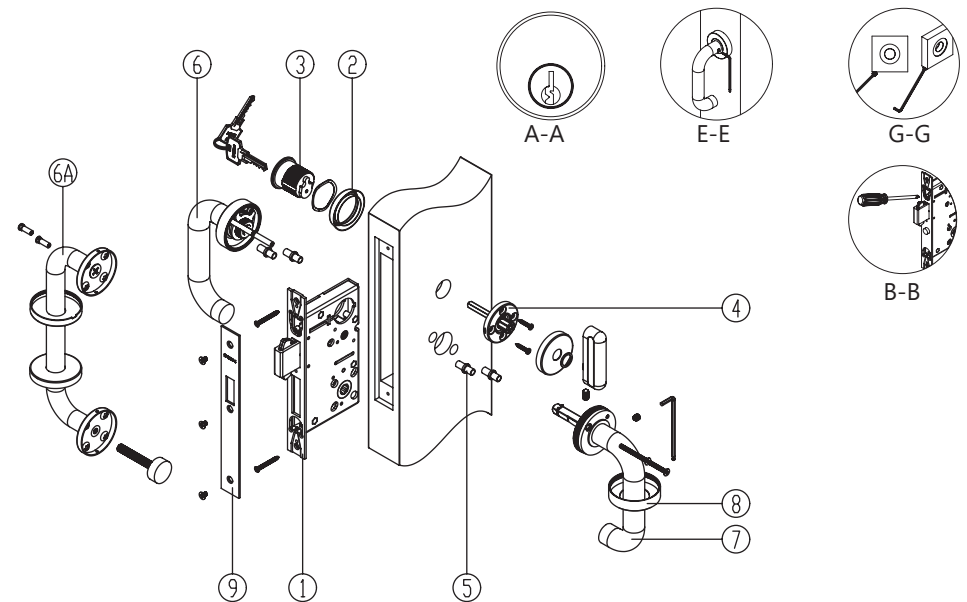
It is intended to be installed in accordance with the installation wiring diagram, mechanical assembly drawings provided with each product, the local authority having jurisdiction (AHJ) and the National Electric Code, NFPA 70. When installed in fail secure mode, the local authority shall be consulted with regard to the use of possible panic hardware to allow emergency exit from the secure area.

Installation Instructions for Privacy Function: PD9540 with X Series Trim



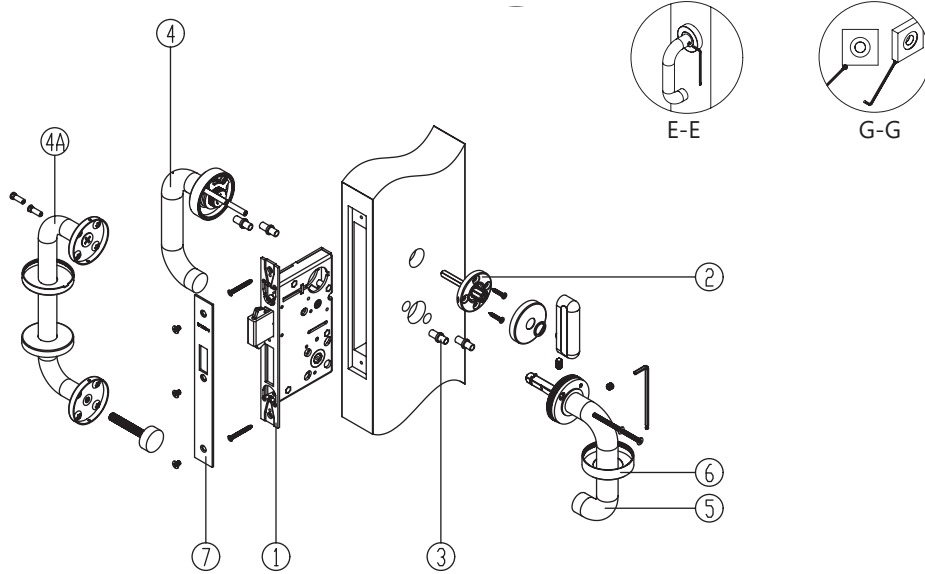
1. Install mortise lockcase in door prep.
2. Install outside emergency release and tighten screws.
3. Mount inside privacy thumbturn rose with M4x#6 screws. Mount rose cover and clear washer before mounting thumbturn piece. Use Allen Key to tighten set screws. Mount the outside thumbturn release rose cover.
4. Install the compression inserts on both sides.
5. Install outside X series trim. Do not tighten the set screws.
- 5A. *Alternative Option: Install outside surface pull without spindle and do not tighten the set screws.*
6. Install inside X series trim and tighten the M4x1-3/8" screws.
7. Install the inside rose cover. XGT is threaded, XGS requires a set screw.
NOTE: After the lever is installed, fully tighten the set screws for both inside and outside trims. See Section E-E. **NOTE:** For XGS square rose, ensure that the rose is aligned prior to tightening the set screw. See Section G-G.
8. Install armored faceplate with M4x6mm screws.

Installation Instructions for Inner Entry Function: PD9550 with X Series Trim



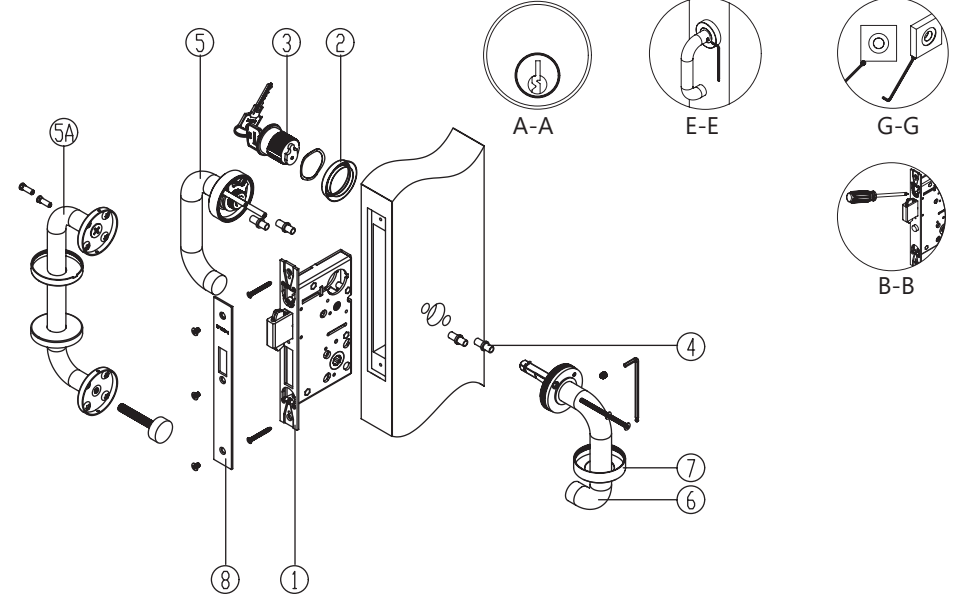
1. Install mortise lockcase in door prep. **NOTE:** DO NOT tighten the faceplate screws until the cylinder has been installed.
2. Screw on outside cylinder escutcheon ring with spacer.
3. Install mortise cylinder. **NOTE:** Key slot on cylinder should be on lower center position. See section A-A Using a screwdriver, tighten the M4.2x19mm screws on the lockcase to position the cylinder into place. See Section B-B.
4. Mount inside privacy thumbturn rose with M4x6mm screws. Mount rose cover and clear washer before mounting thumbturn piece. Use Allen Key to tighten set screws.
5. Install the compression inserts on both sides.
6. Install outside X series trim. Do not tighten the set screws.
- 6A. *Alternative Option: Install outside surface pull without spindle and do not tighten the set screws.*
7. Install inside X series trim and tighten the M4x1-3/8" screws.
8. Install the inside rose cover. XGT is threaded, XGS requires a set screw.
NOTE: After the lever is installed, fully tighten the set screws for both inside and outside trims. See Section E-E. **NOTE:** For XGS square rose, ensure that the rose is aligned prior to tightening the set screw. See Section G-G.
9. Install armored faceplate with M4x6mm screws.

Installation Instructions for Patio Function: PD9560 with X Series Trim

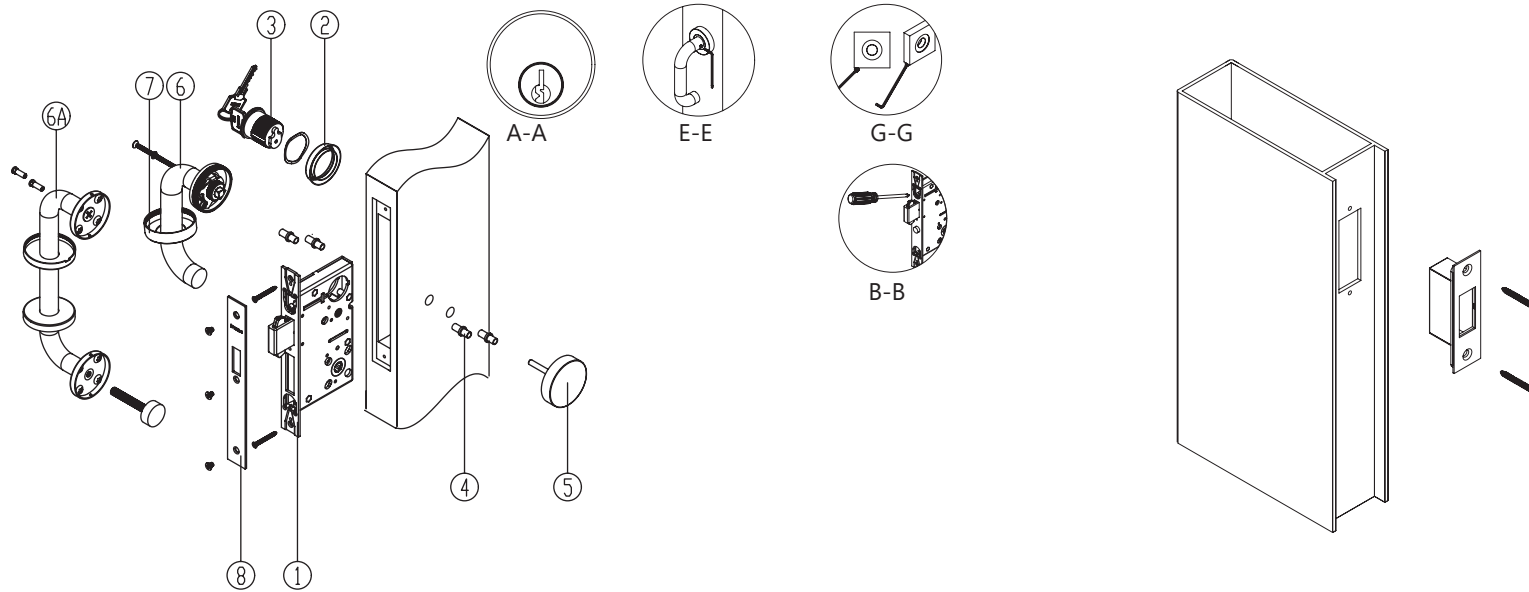


1. Install mortise lockcase in door prep.
2. Mount inside privacy thumbturn rose with M4x6mm screws. Mount rose cover and clear washer before mounting thumbturn piece. Use Allen Key to tighten set screws.
3. Install the compression inserts on both sides.
4. Install outside X series trim. Do not tighten the set screws.
- 4A. *Alternative Option: Install outside surface pull without spindle and do not tighten the set screws.*
5. Install inside X series trim and tighten the M4x1-3/8" screws.
6. Install the inside rose cover. XGT is threaded, XGS requires a set screw.
NOTE: After the lever is installed, fully tighten the set screws for both inside and outside trims. See Section E-E. **NOTE:** For XGS square rose, ensure that the rose is aligned prior to tightening the set screw. See Section G-G.
7. Install armored faceplate with M4x6mm screws.

Installation Instructions for Classroom Function: PD9570 with X Series Trim



1. Install mortise lockcase in door prep. **NOTE:** DO NOT tighten the faceplate screws until the cylinder has been installed.
2. Screw on outside cylinder escutcheon ring with spacer.
3. Install mortise cylinder. **NOTE:** Key slot on cylinder should be on lower center position. See section A-A. Using a screwdriver, tighten the M4.2x19mm screws on the lockcase to position the cylinder into place. See Section B-B.
4. Install the compression inserts on both sides.
5. Install outside X series trim. Do not tighten the set screws.
- 5A. *Alternative Option: Install outside surface pull without spindle and do not tighten the set screws.*
6. Install inside X series trim and tighten the M4x1-3/8" screws.
7. Install the inside rose cover. XGT is threaded, XGS requires a set screw.
NOTE: After the lever is installed, fully tighten the set screws for both inside and outside trims. See Section E-E. **NOTE:** For XGS square rose, ensure that the rose is aligned prior to tightening the set screw. See Section G-G.
8. Install armored faceplate with M4x6mm screws.



1. Install mortise lockcase in door prep. **NOTE:** DO NOT tighten the faceplate screws until the cylinder has been installed.
 2. Screw on outside cylinder escutcheon ring with spacer.
 3. Install mortise cylinder. **NOTE:** This function requires a special cylinder cam. **NOTE:** Key slot on cylinder should be on lower center position. See section A-A. Using a screwdriver, tighten the M4.2x19mm screws on the lockcase to position the cylinder into place. See Section B-B.
 4. Install the compression inserts on both sides.
 5. Install the outside blank rose cover.
 6. Install inside X series trim and tighten the M4x1-3/8" screws.
 - 6A. *Alternative Option: Install outside surface pull without spindle and do not tighten the set screws.*
 7. Install the inside rose cover. XGT is threaded, XGS requires a set screw. **NOTE:** After the lever is installed, fully tighten the set screws for both inside and outside trims. See Section E-E. **NOTE:** For XGS square rose, ensure that the rose is aligned prior to tightening the set screw. See Section G-G.
 8. Install armored faceplate with M4x6mm screws.
1. Mount Strike with screws.